

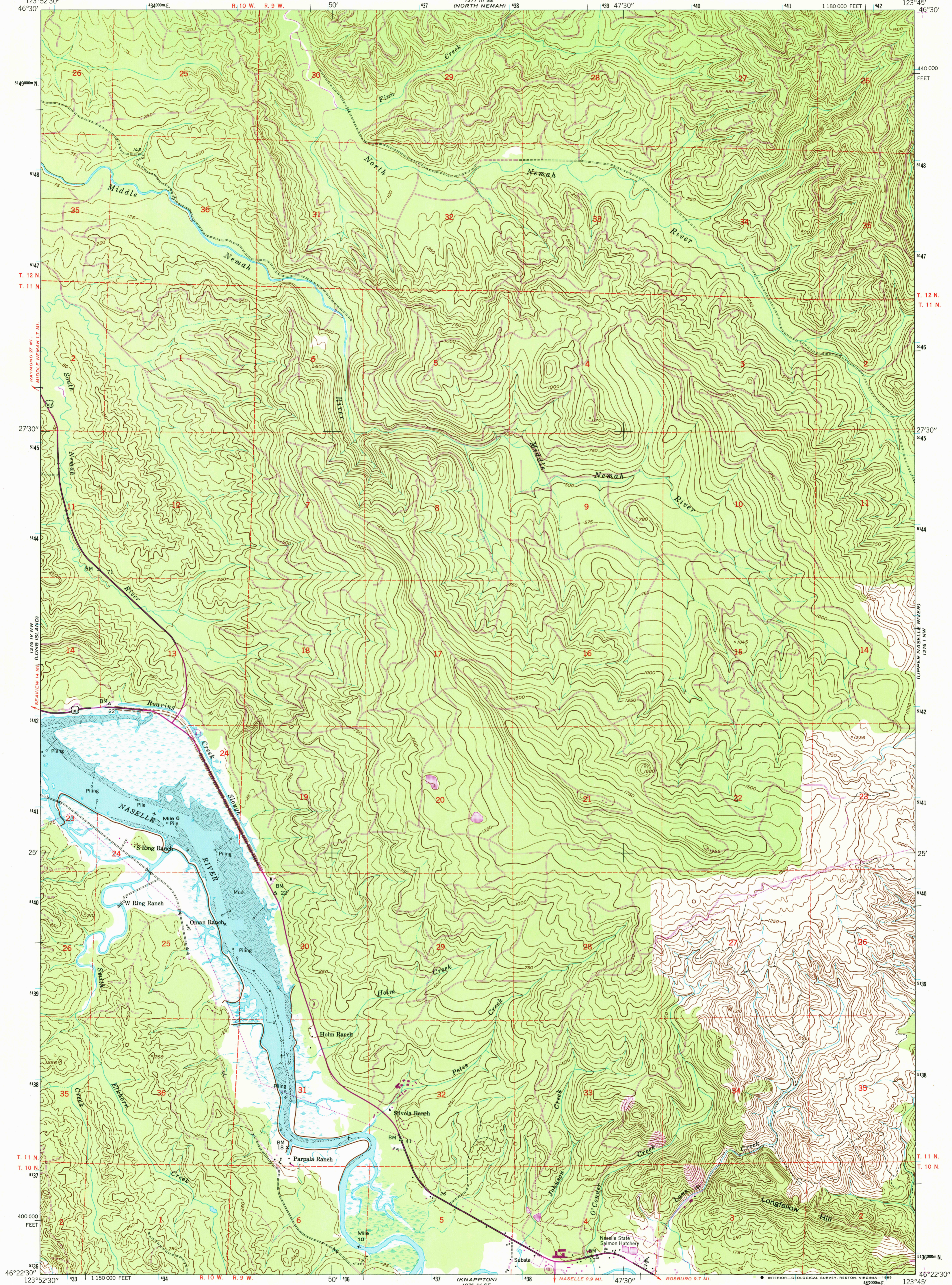
127° 11' 30" W  
126° 52' 30" W

UNITED STATES  
DEPARTMENT OF THE INTERIOR  
GEOLOGICAL SURVEY

UNITED STATES  
DEPARTMENT OF THE ARMY  
CORPS OF ENGINEERS

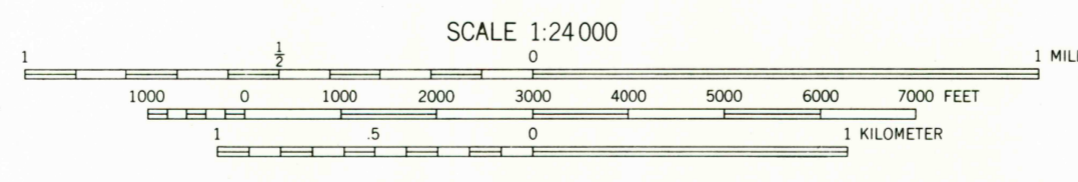
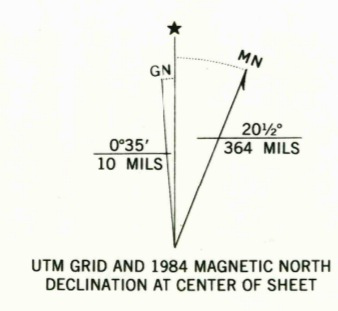
OMAN RANCH QUADRANGLE  
WASHINGTON—PACIFIC CO.  
7.5 MINUTE SERIES (TOPOGRAPHIC)

127° 11' 30" W  
126° 52' 30" W



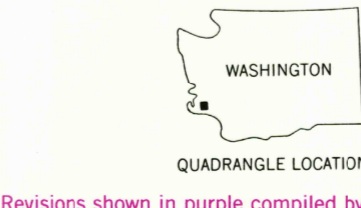
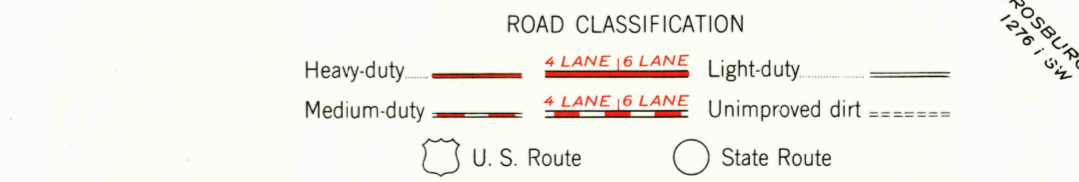
127° 11' 30" W  
126° 52' 30" W

Mapped by the Army Map Service  
Published for civil use by the Geological Survey  
Control by NOS/NOAA  
Topography from aerial photographs by multiplex methods  
Aerial photographs taken 1943. Field checked 1949  
Polyconic projection. 1927 North American Datum  
10,000-foot grid based on Washington coordinate system  
south zone  
1000-meter Universal Transverse Mercator grid ticks,  
zone 10, shown in blue  
To place on the predicted North American Datum 1983,  
move the projection lines 24 meters north and  
97 meters east as shown by dashed corner ticks  
No distinction is made between dwellings, barns,  
commercial and industrial buildings  
Unchecked elevations are shown in brown  
Dashed land lines indicate approximate locations



CONTOUR INTERVAL 50 FEET  
DASHED LINES REPRESENT HALF-INTERVAL CONTOURS  
NATIONAL GEODETIC VERTICAL DATUM OF 1929  
SOUNDINGS IN FEET—DATUM IS MEAN LOWER LOW WATER  
THE RELATIONSHIP BETWEEN THE TWO DATUMS IS VARIABLE  
THE AVERAGE RANGE OF TIDE IS APPROXIMATELY 8 FEET

THIS MAP COMPLIES WITH NATIONAL MAP ACCURACY STANDARDS  
FOR SALE BY U. S. GEOLOGICAL SURVEY, DENVER, COLORADO 80225, OR RESTON, VIRGINIA 22092  
A FOLDER DESCRIBING TOPOGRAPHIC MAPS AND SYMBOLS IS AVAILABLE ON REQUEST



OMAN RANCH, WASH.  
46123-D7-TF-024  
PHOTOREVISED 1984  
1949

Revisions shown in purple compiled by the Geological Survey  
from aerial photographs taken 1981 and other sources  
This information not field checked. Map edited 1984  
DMA 1276 IV NE—SERIES V891

127° 11' 30" W  
126° 52' 30" W