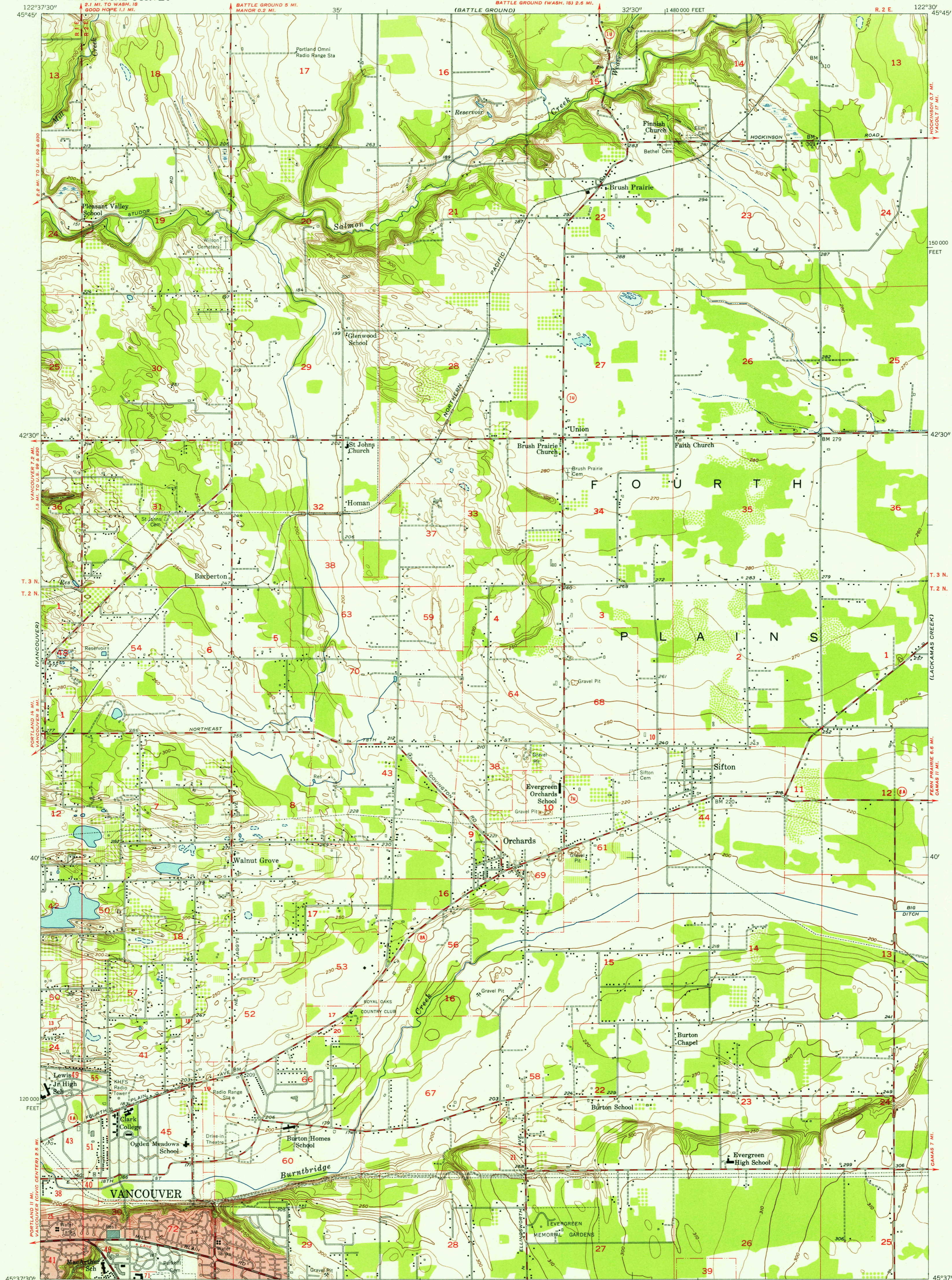
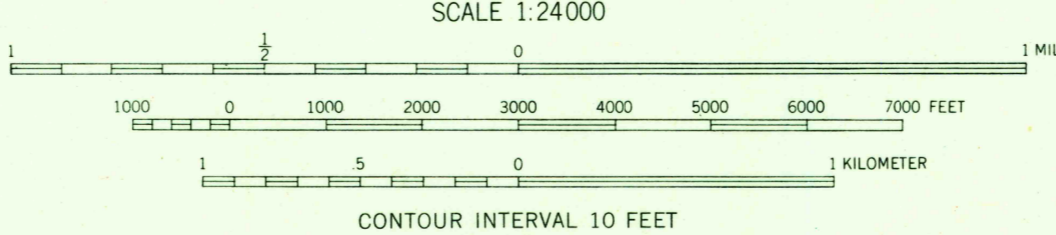
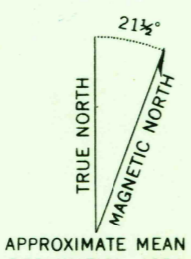


UNITED STATES
DEPARTMENT OF THE INTERIOR
GEOLOGICAL SURVEY

ORCHARDS QUADRANGLE
WASHINGTON—CLARK CO.
7.5 MINUTE SERIES (TOPOGRAPHIC)
NE/4 PORTLAND 15' QUADRANGLE



Mapped, edited, and published by the Geological Survey
Control by USGS, USC&GS and USCE
Topography from aerial photographs by Kelsch plotter and by
plane-table surveys 1954. Aerial photographs taken 1951
Polyconic projection. 1927 North American datum
10,000-foot grid based on Washington coordinate system, south zone
Red tint indicates areas in which only landmark buildings are shown



ROAD CLASSIFICATION
Heavy-duty ——— Light-duty ———
Medium-duty ——— Unimproved dirt ———
U. S. Route ——— State Route ———

ORCHARDS, WASH.
NE/4 PORTLAND 15' QUADRANGLE
N 4537.5—W 12230.7/7.5
1954

U.S.G.S.
FILE COPY
TOPOGRAPHIC DIVISION

U.S.G.S.
FILE COPY
TOPOGRAPHIC DIVISION

THIS MAP COMPLIES WITH NATIONAL MAP ACCURACY STANDARDS
FOR SALE BY U. S. GEOLOGICAL SURVEY, FEDERAL CENTER, DENVER, COLORADO OR WASHINGTON 25, D. C.
A FOLDER DESCRIBING TOPOGRAPHIC MAPS AND SYMBOLS IS AVAILABLE ON REQUEST