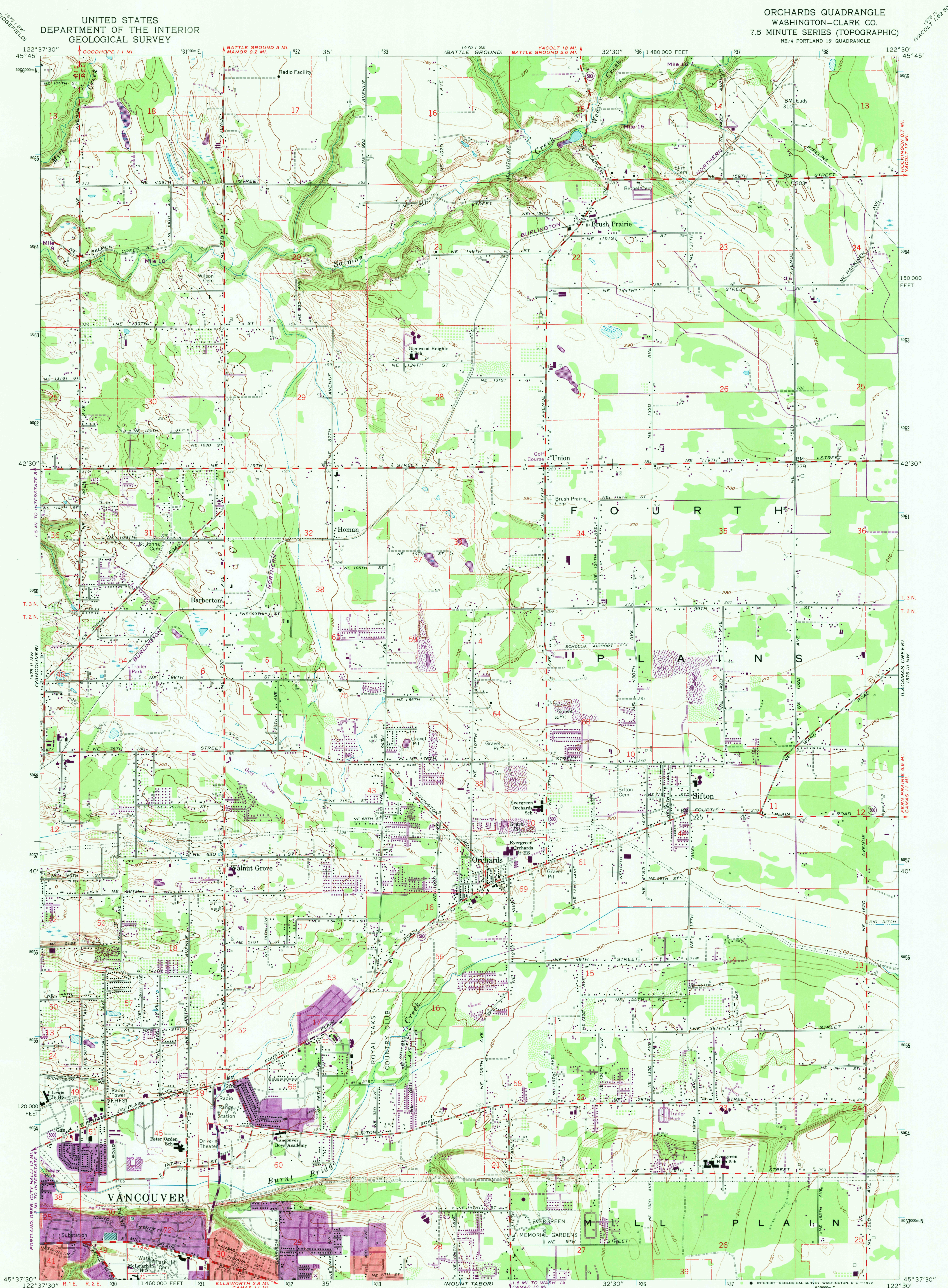


UNITED STATES
DEPARTMENT OF THE INTERIOR
GEOLOGICAL SURVEY

ORCHARDS QUADRANGLE
WASHINGTON-CLARK CO.
7.5 MINUTE SERIES (TOPOGRAPHIC)
NE/4 PORTLAND 15' QUADRANGLE



Maped, edited, and published by the Geological Survey
Control by USGS, USC&GS, and USCE
Topography from aerial photographs by photogrammetric methods
and by planetable surveys 1954. Aerial photographs taken 1951
Revised from aerial photographs taken 1960. Field check 1961
Polyconic projection. 1927 North American datum
10,000-foot grid based on Washington coordinate system, south zone
1000-meter Universal Transverse Mercator grid ticks,
zone 10, shown in blue
Red tint indicates areas in which only landmark buildings are shown
Fine red dashed lines indicate selected fence lines
Purple tint indicates extension of urban areas

SCALE 1:24,000
CONTOUR INTERVAL 10 FEET
DATUM IS MEAN SEA LEVEL
THIS MAP COMPLIES WITH NATIONAL MAP ACCURACY STANDARDS
FOR SALE BY U.S. GEOLOGICAL SURVEY, DENVER, COLORADO 80225, OR WASHINGTON, D. C. 20542
A FOLDER DESCRIBING TOPOGRAPHIC MAPS AND SYMBOLS IS AVAILABLE ON REQUEST

ROAD CLASSIFICATION
Medium-duty ——— Light-duty ———
Unimproved dirt ———
State Route ———
WASHINGTON
QUADRANGLE LOCATION
USGS
Historical File
Topographic Division
ORCHARDS, WASH.
NE/4 PORTLAND 15' QUADRANGLE
N4537.5—W12230/7.5
1961
PHOTOREVISED 1970
AMS 1475 II NE—SERIES V891