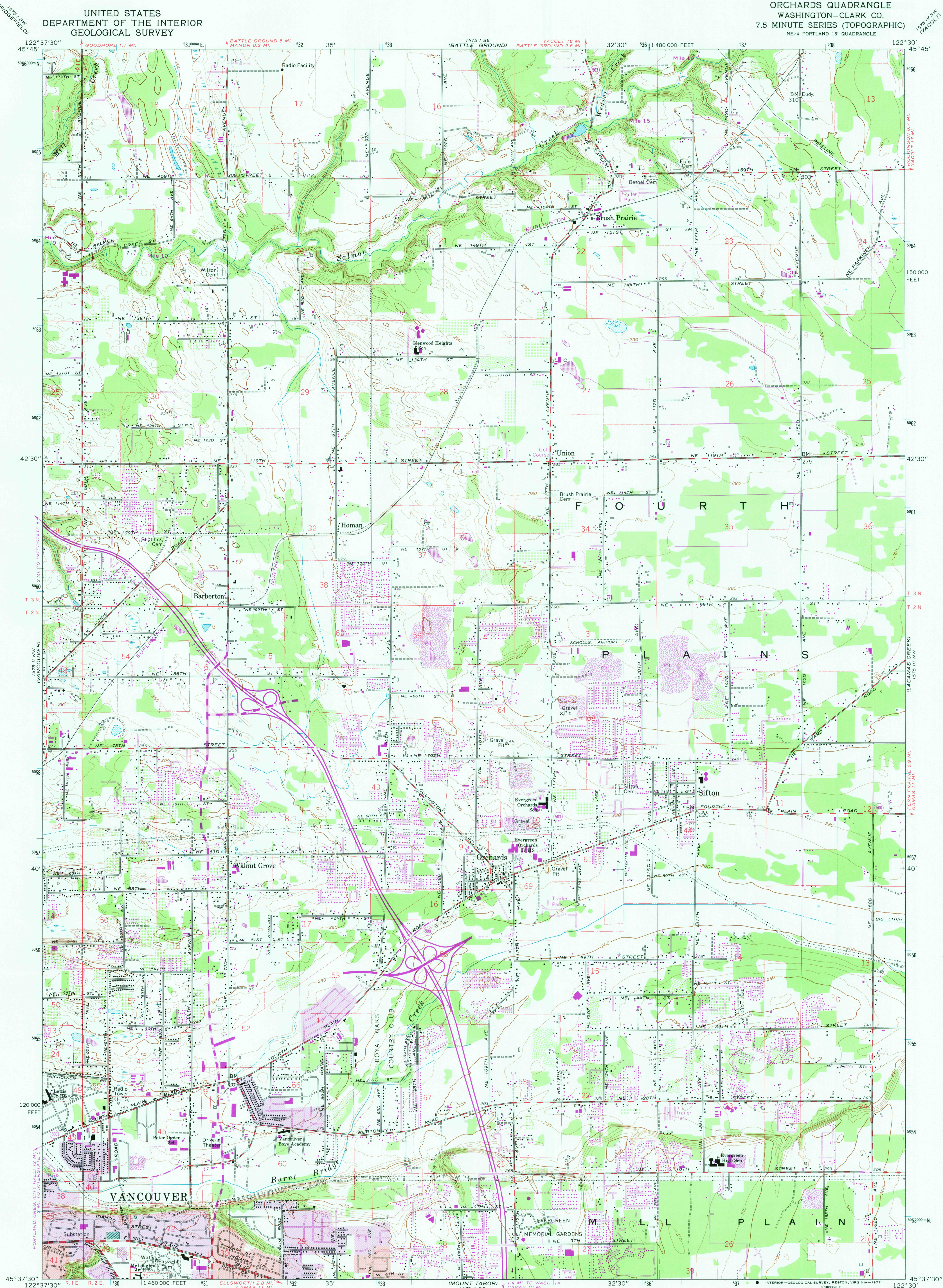


UNITED STATES
DEPARTMENT OF THE INTERIOR
GEOLOGICAL SURVEY

ORCHARDS QUADRANGLE
WASHINGTON—CLARK CO.
7.5 MINUTE SERIES (TOPOGRAPHIC)
NE 1/4 PORTLAND 15' QUADRANGLE



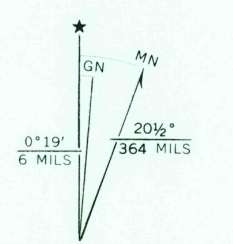
Mapped, edited, and published by the Geological Survey

Control by USGS, NOS/NOAA, and USCE

Topography from aerial photographs by photogrammetric methods and by planetable surveys 1954. Aerial photographs taken 1951. Revised from aerial photographs taken 1960. Field check 1961

Polyconic projection. 1927 North American datum, 10,000-foot grid based on Washington coordinate system, south zone 1000-meter Universal Transverse Mercator grid ticks, zone 10, shown in blue

Red tint indicates areas in which only landmark buildings are shown. Fine red dashed lines indicate selected fence lines. Purple tint indicates extension of urban areas



SCALE 1:24,000
CONTOUR INTERVAL 10 FEET
NATIONAL GEODETIC VERTICAL DATUM OF 1929

THIS MAP COMPLIES WITH NATIONAL MAP ACCURACY STANDARDS
FOR SALE BY U.S. GEOLOGICAL SURVEY, DENVER, COLORADO 80225, OR RESTON, VIRGINIA 22092
A FOLDER DESCRIBING TOPOGRAPHIC MAPS AND SYMBOLS IS AVAILABLE ON REQUEST

ROAD CLASSIFICATION
Primary highway, hard surface
Secondary highway, hard surface
Light-duty road, hard or improved surface
Unimproved road
Interstate Route
U.S. Route
State Route



USGS
Historical File
Topographic Division

ORCHARDS, WASH.
NE 1/4 PORTLAND 15' QUADRANGLE
N4537.5—W12230.7/5

1961
PHOTOREVISED 1970 AND 1975
AMS 1475 II NE—SERIES V891

FEB 14 1978

Revisions shown in purple compiled from aerial photographs taken 1970 and 1975. This information not field checked