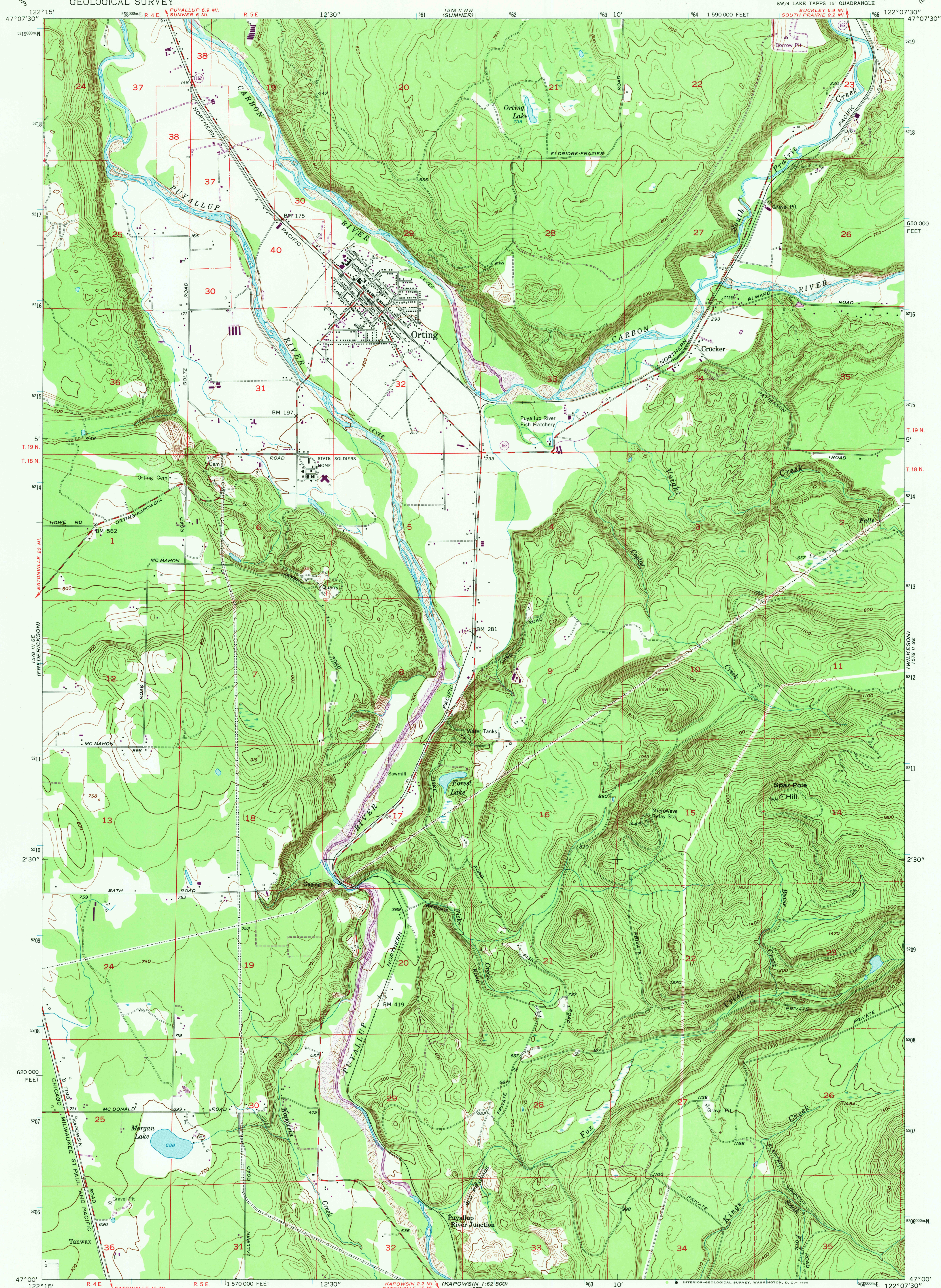


UNITED STATES
DEPARTMENT OF THE INTERIOR
GEOLOGICAL SURVEY

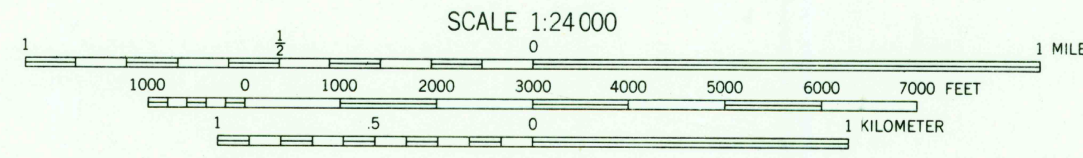
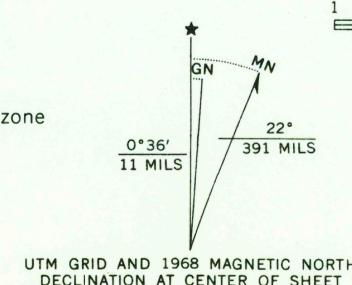
ORTING QUADRANGLE
WASHINGTON—PIERCE CO.
7.5 MINUTE SERIES (TOPOGRAPHIC)



Mapped, edited, and published by the Geological Survey
Control by USGS and USC&GS

Topography from aerial photographs by multiple methods
Aerial photographs taken 1954. Field check 1956
Polyconic projection. 1927 North American datum
10,000-foot grid based on Washington coordinate system, south zone
1000-meter Universal Transverse Mercator grid ticks,
zone 10, shown in blue
Dashed land lines indicate approximate locations
Unchecked elevations are shown in brown

Revisions shown in purple compiled from aerial photographs
taken 1968. This information not field checked



CONTOUR INTERVAL 20 FEET
DATUM IS MEAN SEA LEVEL



ROAD CLASSIFICATION
Medium-duty ——— Light-duty ———
Unimproved dirt ———
State Route ———

ORTING, WASH.
SW/4 LAKE TAPPS 15' QUADRANGLE
N4700—W12207.5/7.5

USGS
Historical File
Topographic Division
1956
PHOTOREVISED 1968
AMS 1578 II SW—SERIES V891

FOR SALE BY U.S. GEOLOGICAL SURVEY, DENVER, COLORADO 80225 OR WASHINGTON, D.C. 20242
A FOLDER DESCRIBING TOPOGRAPHIC MAPS AND SYMBOLS IS AVAILABLE ON REQUEST

U.S.G.S.
FILE COPY
TOPOGRAPHIC DIVISION

2785
001 2 7 1969