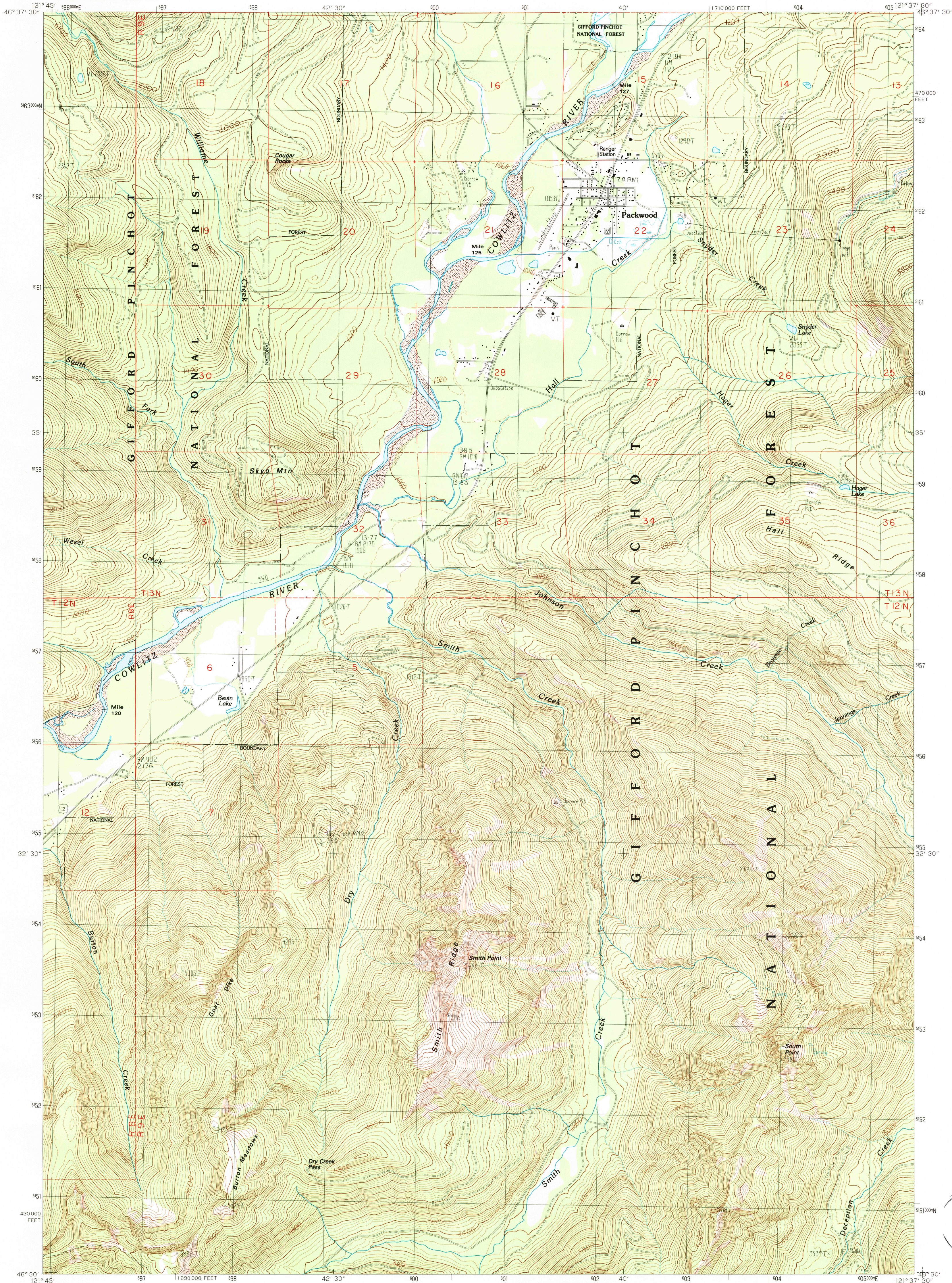


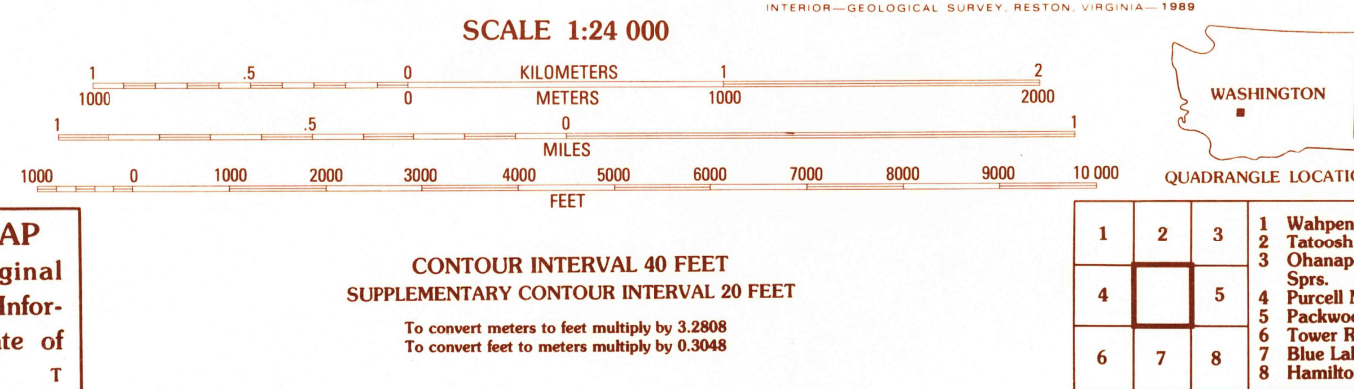
UNITED STATES
DEPARTMENT OF THE INTERIOR
GEOLOGICAL SURVEY

PACKWOOD QUADRANGLE
WASHINGTON—LEWIS CO
7.5 MINUTE SERIES (TOPOGRAPHIC)



PRODUCED BY THE UNITED STATES GEOLOGICAL SURVEY
CONTROL BY USGS, NOSNOAA
COMPILED FROM AERIAL PHOTOGRAPHS TAKEN 1959
FIELD CHECKED 1962
LIMITED REVISION FROM AERIAL PHOTOGRAPHS TAKEN 1963/1965
FIELD CHECKED 1967, MAP EDITED 1989
PROJECTION LAMBERT CONFORMAL CONIC
GRID: 1000-METER UNIVERSAL TRANSVERSE MERCATOR, ZONE 10
10,000-FOOT STATE GRID TICS, WASHINGTON, SOUTH ZONE
UTM GRID DECLINATION 1927 NORTH AMERICAN DATUM
1983 MAGNETIC NORTH DECLINATION 30°00' EAST
VERTICAL DATUM NATIONAL GEODETIC VERTICAL DATUM OF 1929
HORIZONTAL DATUM 1927 NORTH AMERICAN DATUM
To place on the predicted North American Datum of 1983,
move the projection lines as shown by dashed corner ticks
(22 meters north and 92 meters east)
There may be private inholdings within the boundaries of
any Federal and State Reservation shown on this map
Public Land Survey System is shown as published in 1962
and verified or supplemented in 1987
No distinction made between houses, barns, and other buildings
Where omitted, land lines have not been established

PROVISIONAL MAP
Produced from original
manuscript drawings. Infor-
mation shown as of date of
field check



ROAD LEGEND
Improved Road
Unimproved Road
Trail
Interstate Route
U.S. Route
State Route
PACKWOOD, WASH.
PROVISIONAL EDITION 1989

USGS NMD HISTORICAL MAP
SEP 11 1989
REC'D FILE COPY

FOR SALE BY U.S. GEOLOGICAL SURVEY, DENVER COLORADO 80225, OR RESTON, VIRGINIA 22092

46121-E6-TF-024