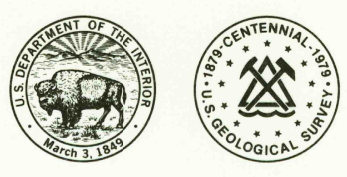


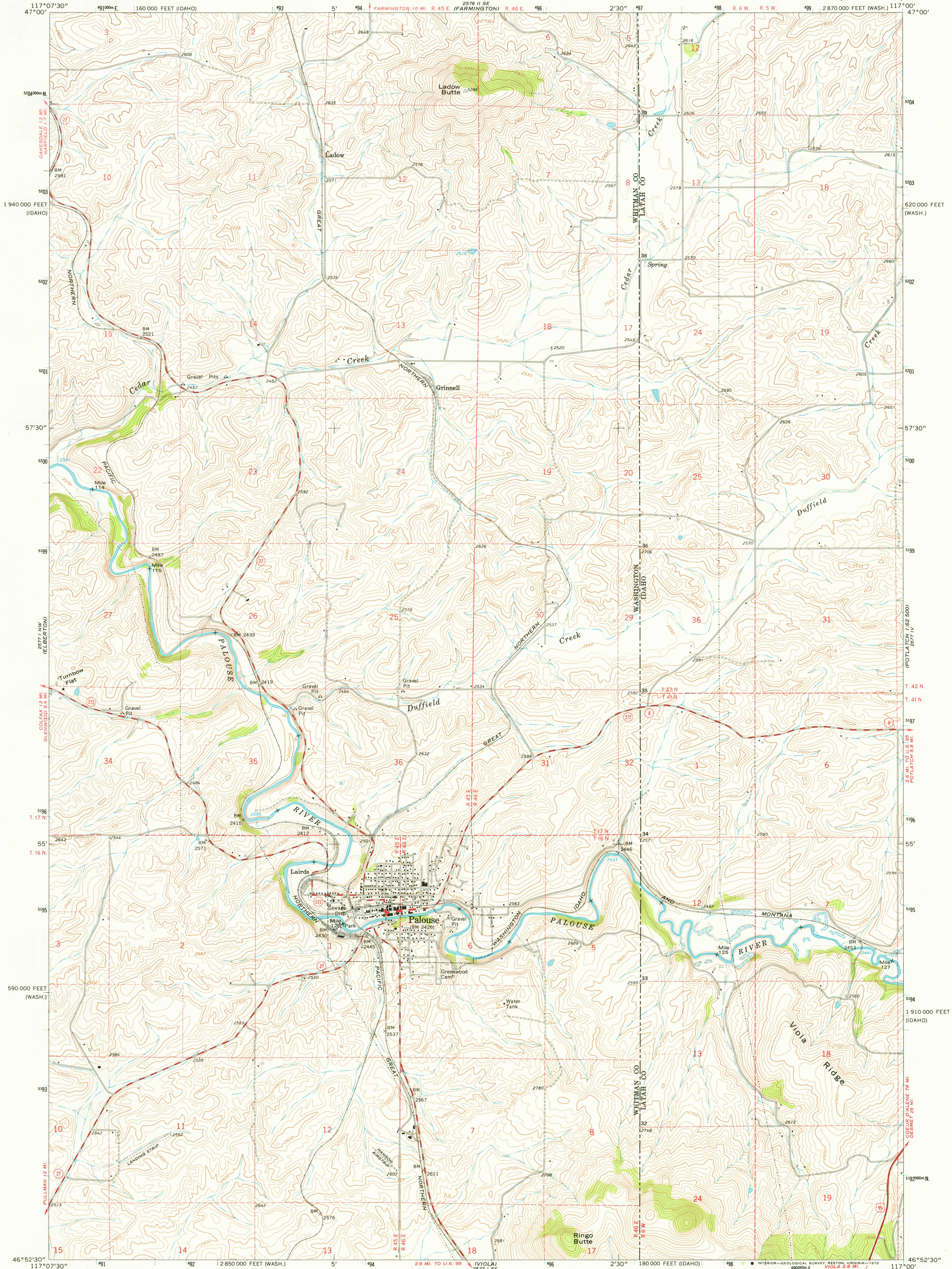
2578 II NW
(GARFIELD)

UNITED STATES
DEPARTMENT OF THE INTERIOR
GEOLOGICAL SURVEY

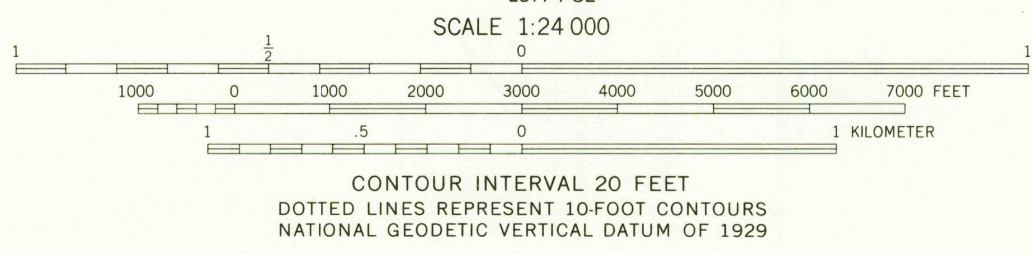
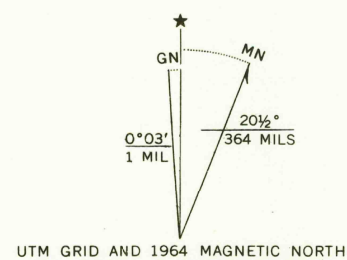


PALOUSE QUADRANGLE
WASHINGTON-IDAHO
7.5 MINUTE SERIES (TOPOGRAPHIC)

2578 II
(TENSED)
1:62 500



Mapped, edited, and published by the Geological Survey
Control by USGS and USC&GS
Topography by photogrammetric methods from aerial
photographs taken 1961. Field checked 1964
Polyconic projection, 1927 North American datum
10,000-foot grids based on Washington coordinate system,
south zone and Idaho coordinate system, west zone
1000-meter Universal Transverse Mercator grid ticks
zone 11, shown in blue
Fine red dashed lines indicate selected fence lines
Map photosinspected 1975
No major culture or drainage changes observed



ROAD CLASSIFICATION
Heavy-duty ——— Light-duty ———
Medium-duty ——— Unimproved dirt ———
U.S. Route ——— State Route ———

PALOUSE, WASH.-IDAHO
N4652.5-W11700.7.5

USGS
Historical File
Topographic Division

1964
PHOTOINSPECTED 1975
AMS 2577 I NE-SERIES V891

MAR 19 1978

2500