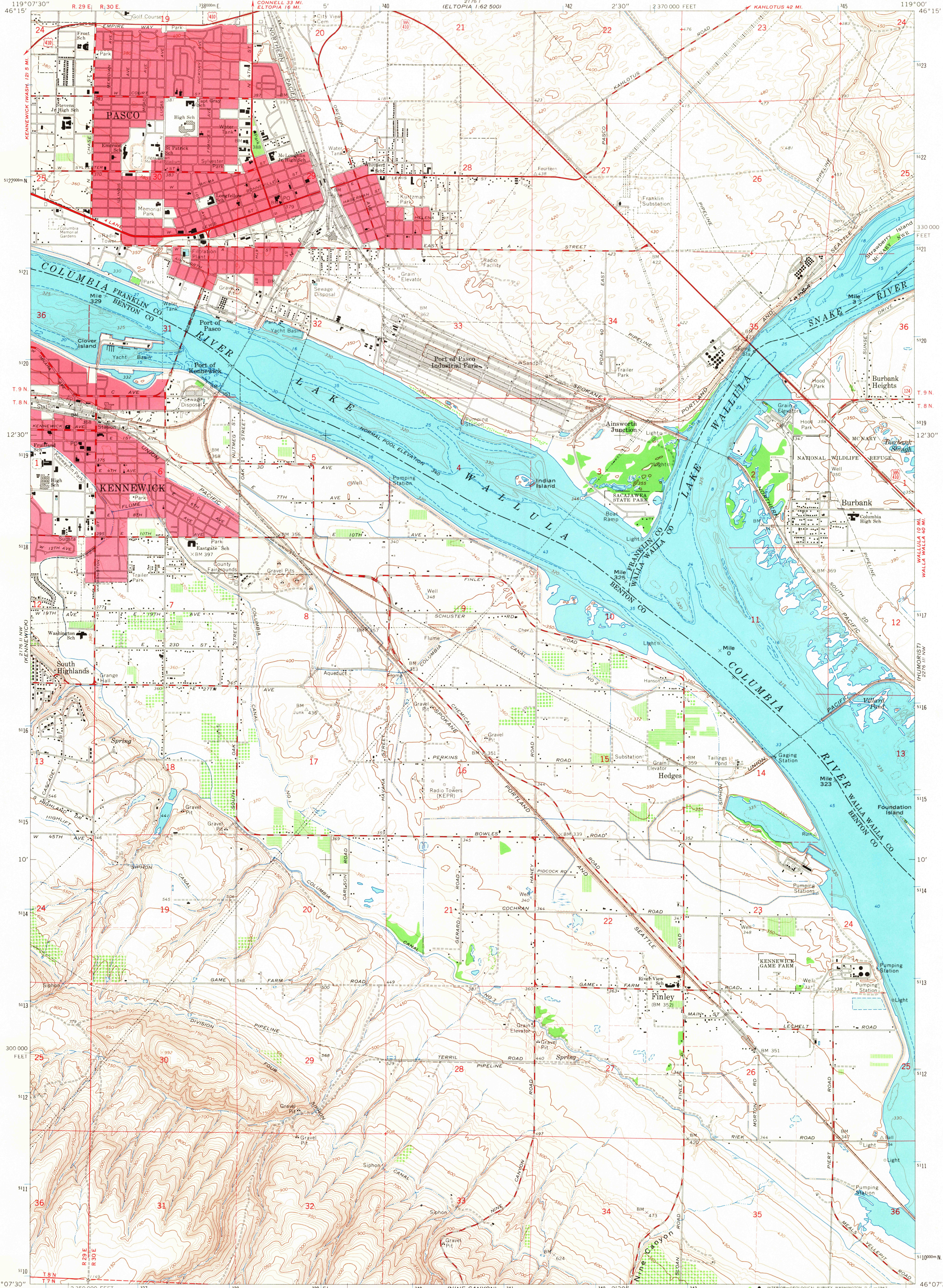
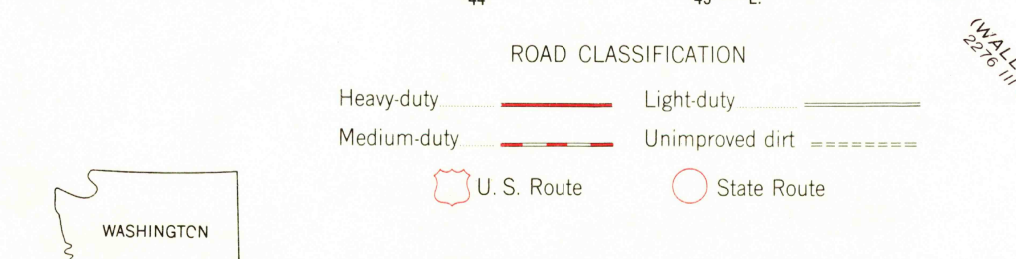
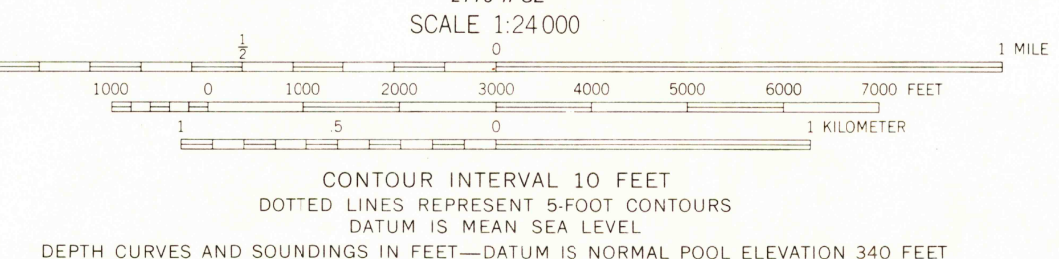
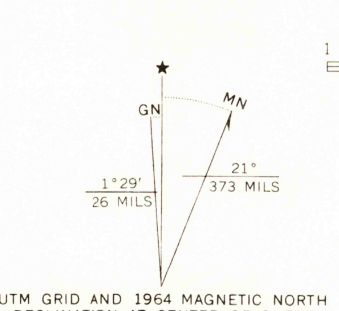


2176 I
1:62,500

2176 I
1:62,500



Mapped, edited, and published by the Geological Survey
Control by USGS, USC&GS, and U. S. Bureau of Reclamation
Topography by photogrammetric methods from aerial photographs
taken 1959 and planimetric surveys by USBR 1941 and 1955
Field checked 1964. Underwater contours by USCE
Selected hydrographic data compiled from USC&GS
Charts 6164 (1960) and 682-SC (1963)
This information is not intended for navigational purposes
Polyconic projection. 1927 North American datum
10,000-foot grid based on Washington coordinate system,
south zone
1000-meter Universal Transverse Mercator grid ticks,
zone 11, shown in blue
Red tint indicates areas in which only landmark buildings are shown
Fine red dashed lines indicate selected fence lines



U.S.G.S. PASCO, WASH.
NE/4 PASCO 15' QUADRANGLE
N4607.5-W11900/7.5
1964
TOPOGRAPHIC DIVISION MS 2176 II NE-SERIES 9891

USGS
Historical File
Topographic Division

3665