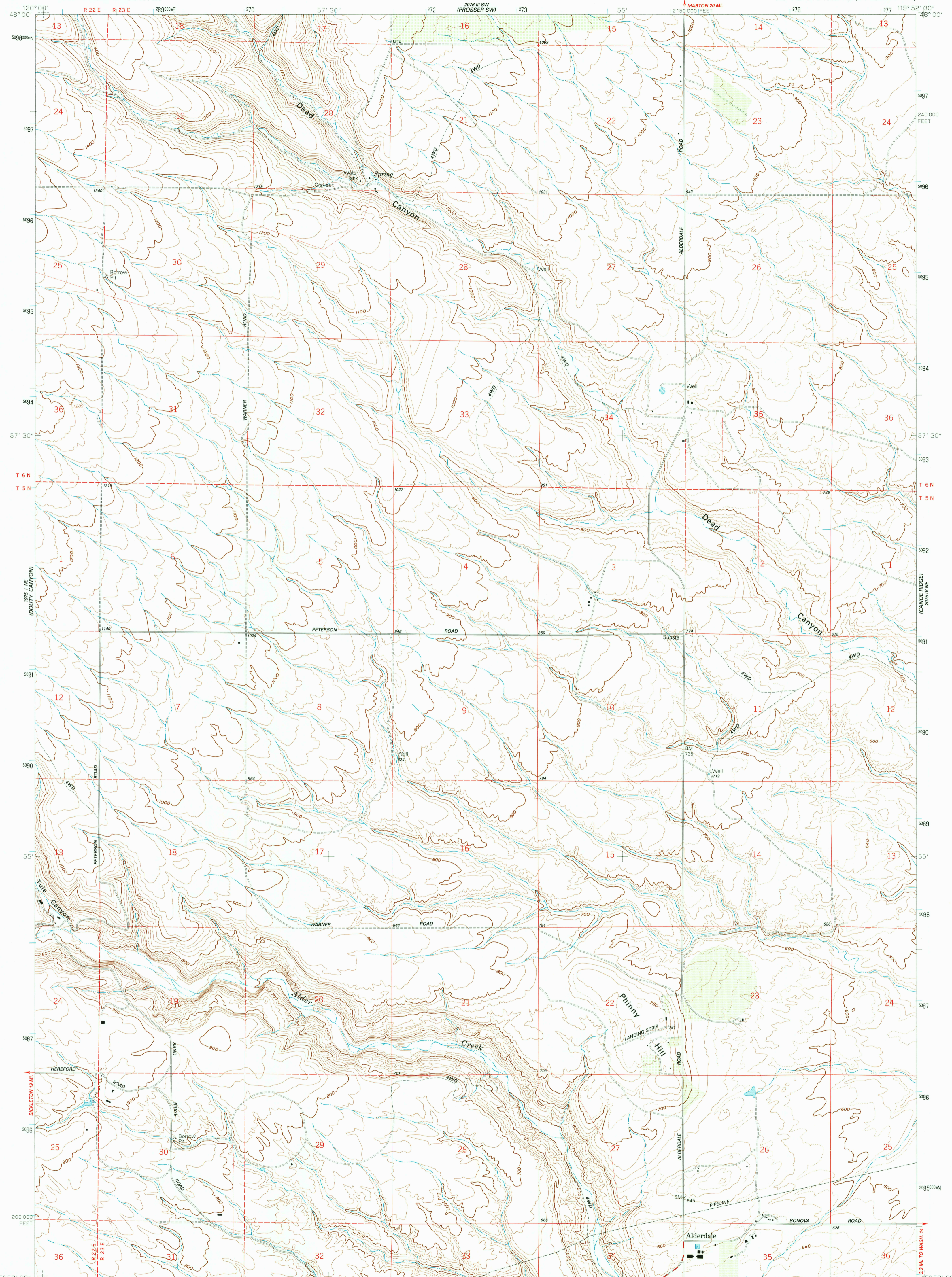
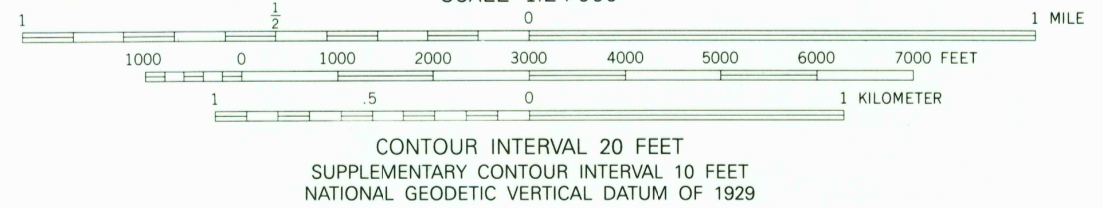


PROSSER  
R 22 E R 23 E

PROSSER SW



Produced by the United States Geological Survey  
Control by USGS and NOS/NOAA  
Compiled from aerial photographs taken 1958. Revised from aerial photographs taken 1989 and other sources. Field checked 1991. Map edited 1993.  
1927 North American Datum (NAD 27). Projection and 10000-foot ticks: Washington Coordinate System, south zone (Lambert Conformal Conic).  
Blue 1000-meter Universal Transverse Mercator ticks, zone 11  
North American Datum of 1983 (NAD 83) is shown by dashed corner ticks. The values of the shift between NAD 27 and NAD 83 for 7.5-minute intersections are given in USGS Bulletin 1875.  
Fine red dashed lines indicate selected fence and field lines where generally visible on aerial photographs. This information is unchecked.



ROAD CLASSIFICATION

Primary highway, hard surface	Light-duty road, hard or improved surface
Secondary highway, hard surface	Unimproved road
Interstate Route	U. S. Route
	State Route

THIS MAP COMPLIES WITH NATIONAL MAP ACCURACY STANDARDS  
FOR SALE BY U.S. GEOLOGICAL SURVEY  
DENVER, COLORADO 80225, OR RESTON, VIRGINIA 22092  
A FOLDER DESCRIBING TOPOGRAPHIC MAPS AND SYMBOLS IS AVAILABLE ON REQUEST



PHINNY HILL, WASH.  
45119-H8-TF-024  
1993  
DMA 2075 IV NW-SERIES V891

