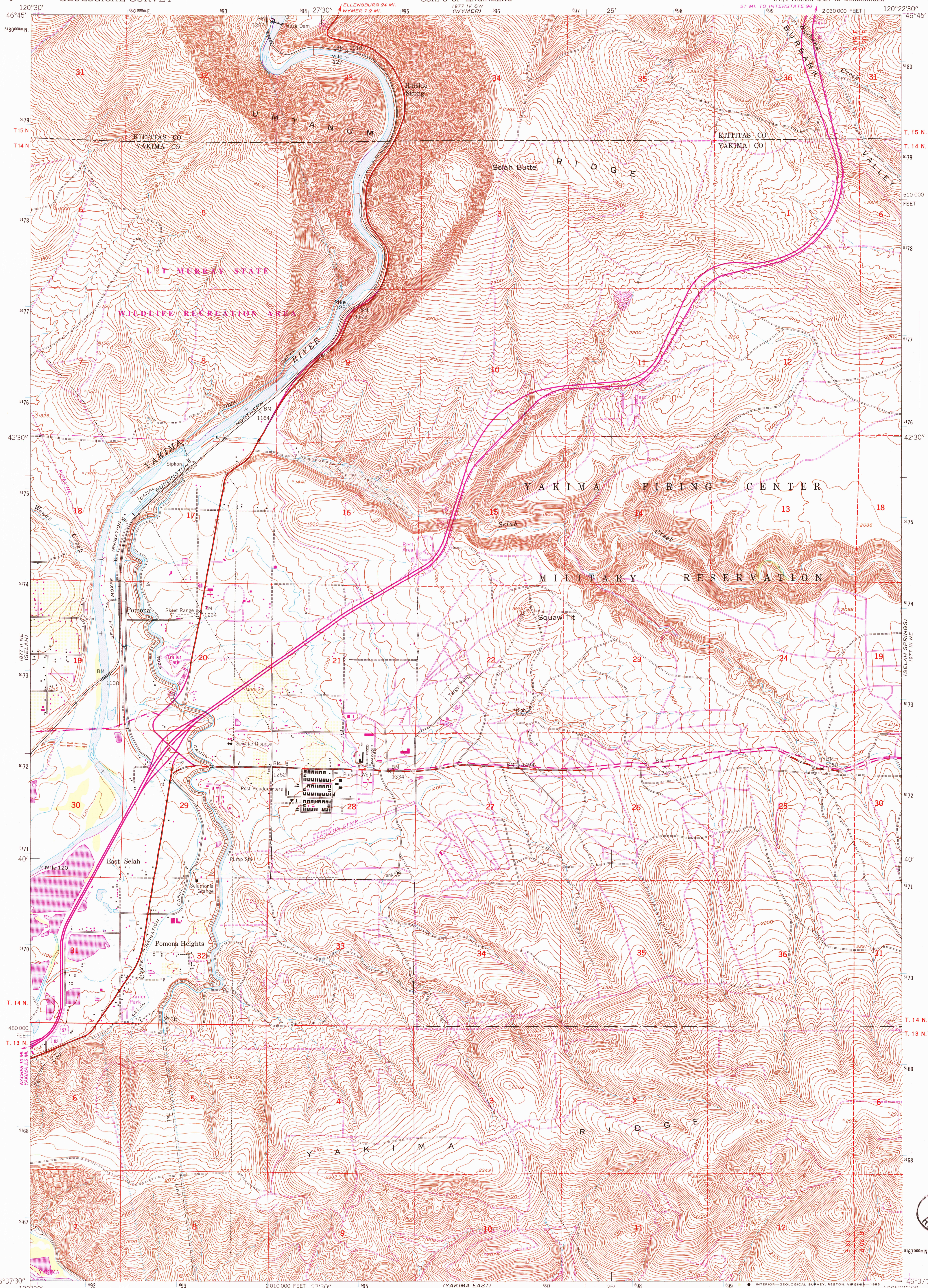


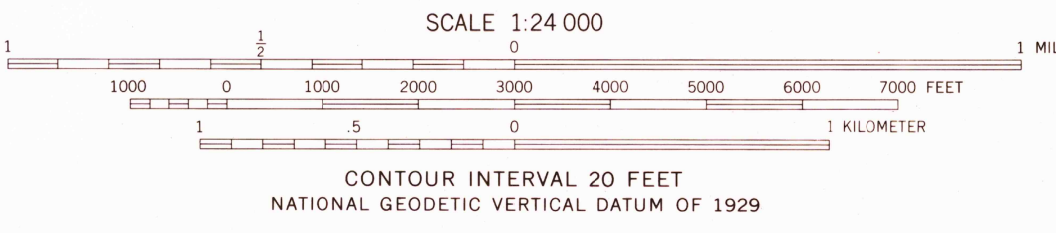
UNITED STATES  
DEPARTMENT OF THE INTERIOR  
GEOLOGICAL SURVEY

UNITED STATES  
DEPARTMENT OF THE ARMY  
CORPS OF ENGINEERS

POMONA QUADRANGLE  
WASHINGTON  
7.5 MINUTE SERIES (TOPOGRAPHIC)  
NW/4 YAKIMA EAST 15' QUADRANGLE



Mapped by the Army Map Service  
Published for civil use by the Geological Survey  
Control by USGS, NOS/NOAA, and U.S. Bureau of Reclamation  
Topography from aerial photographs by photogrammetric methods  
Aerial photographs taken 1952. Field check 1953  
Polyconic projection. 1927 North American datum  
10,000-foot grid based on Washington coordinate system,  
south zone  
1000-meter Universal Transverse Mercator grid ticks,  
zone 10, shown in blue  
To place on the predicted North American Datum 1983,  
move the projection lines 20 meters north and  
88 meters east as shown by dashed corner ticks  
There may be private inholdings within the boundaries of  
the National or State reservations shown on this map



ROAD CLASSIFICATION	
Heavy-duty	Light-duty
Medium-duty	Unimproved dirt
Interstate	U.S. Route
	State Route

POMONA, WASH.  
NW/4 YAKIMA EAST 15' QUADRANGLE  
46120-F4-TF-024

1953  
PHOTOREVISED 1985  
DMA 1977 III NW-SERIES V891

Revisions shown in purple compiled by the Geological Survey  
from aerial photographs taken 1981.  
This information not field checked. Map edited 1985

