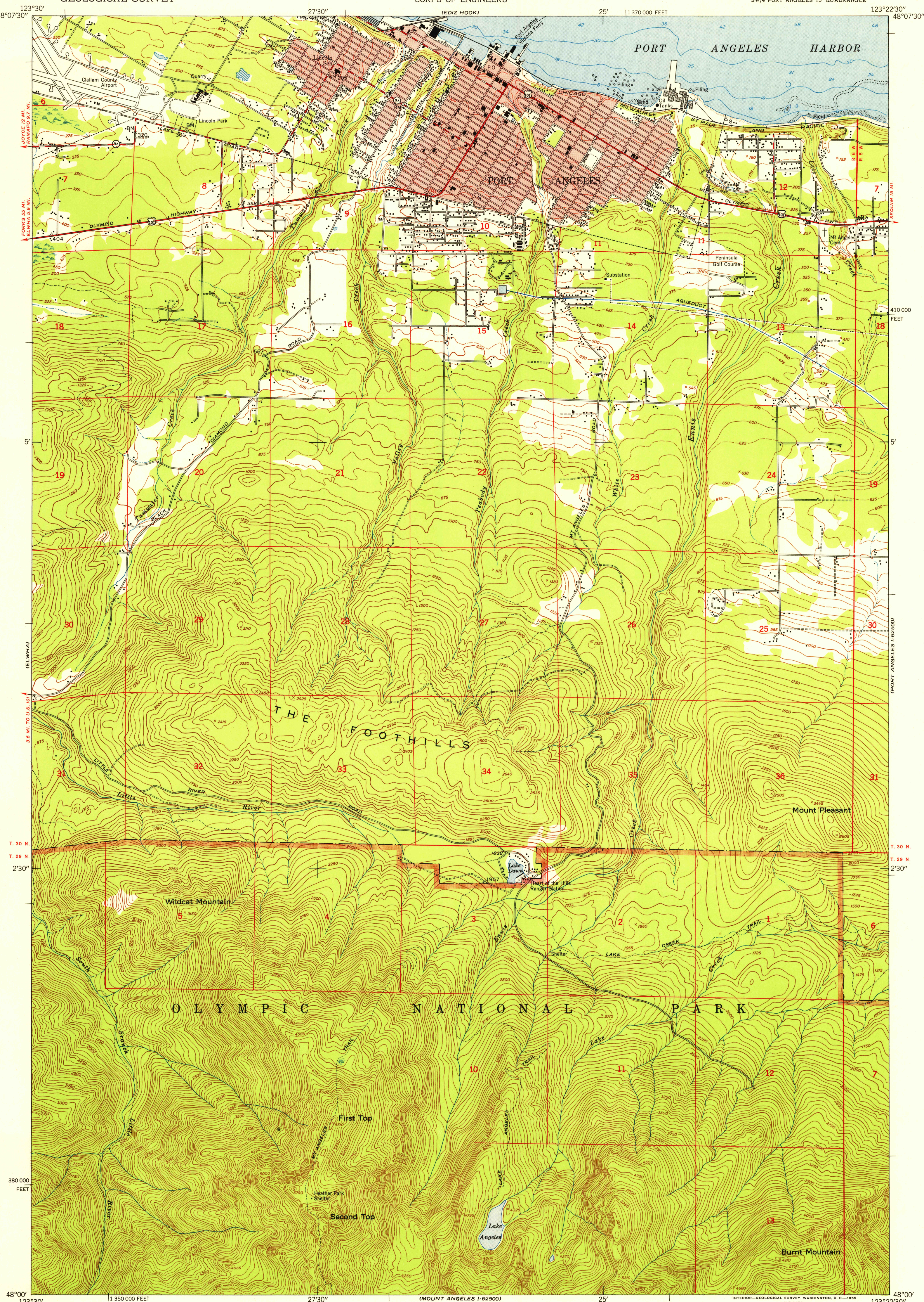


U.S.G.S.
FILE COPY
TOPOGRAPHIC DIVISION



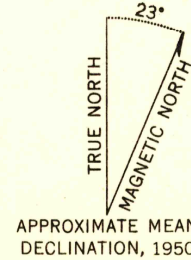
Mapped by the Army Map Service
Published for civil use by the Geological Survey
Control by USGS, USC&GS, and USCE

Topography from aerial photographs by multiplex methods
Aerial photographs taken 1943. Field check 1950
Coastal hydrography compiled from USC&GS chart 6303 dated 1949

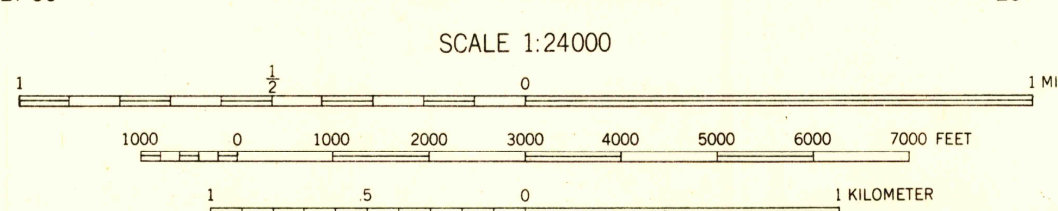
Polyconic projection. 1927 North American datum
10,000-foot grid based on Washington coordinate system,
north zone

Red tint indicates areas in which only
landmark buildings are shown

Unchecked elevations are shown in brown

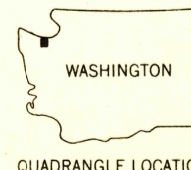


APPROXIMATE MEAN
DECLINATION, 1950



CONTOUR INTERVAL 50 FEET
DASHED LINES REPRESENT HALF-INTERVAL CONTOURS
DATUM IS MEAN SEA LEVEL
DEPTH CURVES AND SOUNDINGS IN FEET—DATUM IS MEAN LOWER LOW WATER
SHORELINE SHOWN REPRESENTS THE APPROXIMATE LINE OF MEAN HIGH WATER
THE MEAN RANGE OF TIDE IS APPROXIMATELY 7.2 FEET

THIS MAP COMPLIES WITH NATIONAL MAP ACCURACY STANDARDS
FOR SALE BY U. S. GEOLOGICAL SURVEY, FEDERAL CENTER, DENVER, COLORADO OR WASHINGTON 25, D. C.
A FOLDER DESCRIBING TOPOGRAPHIC MAPS AND SYMBOLS IS AVAILABLE ON REQUEST



QUADRANGLE LOCATION

ROAD CLASSIFICATION
Heavy-duty ——— 4 LANE (6 LANE) Light-duty ———
Medium duty ——— 4 LANE (6 LANE) Unimproved dirt ———
○ U. S. Route ○ State Route

USGS Historical File
Topographic Division
PORT ANGELES, WASH.
SW/4 PORT ANGELES 15' QUADRANGLE
N4800—W12322.5/7.5

1950

U.S.G.S.
FILE COPY
TOPOGRAPHIC DIVISION

APR 14 1955