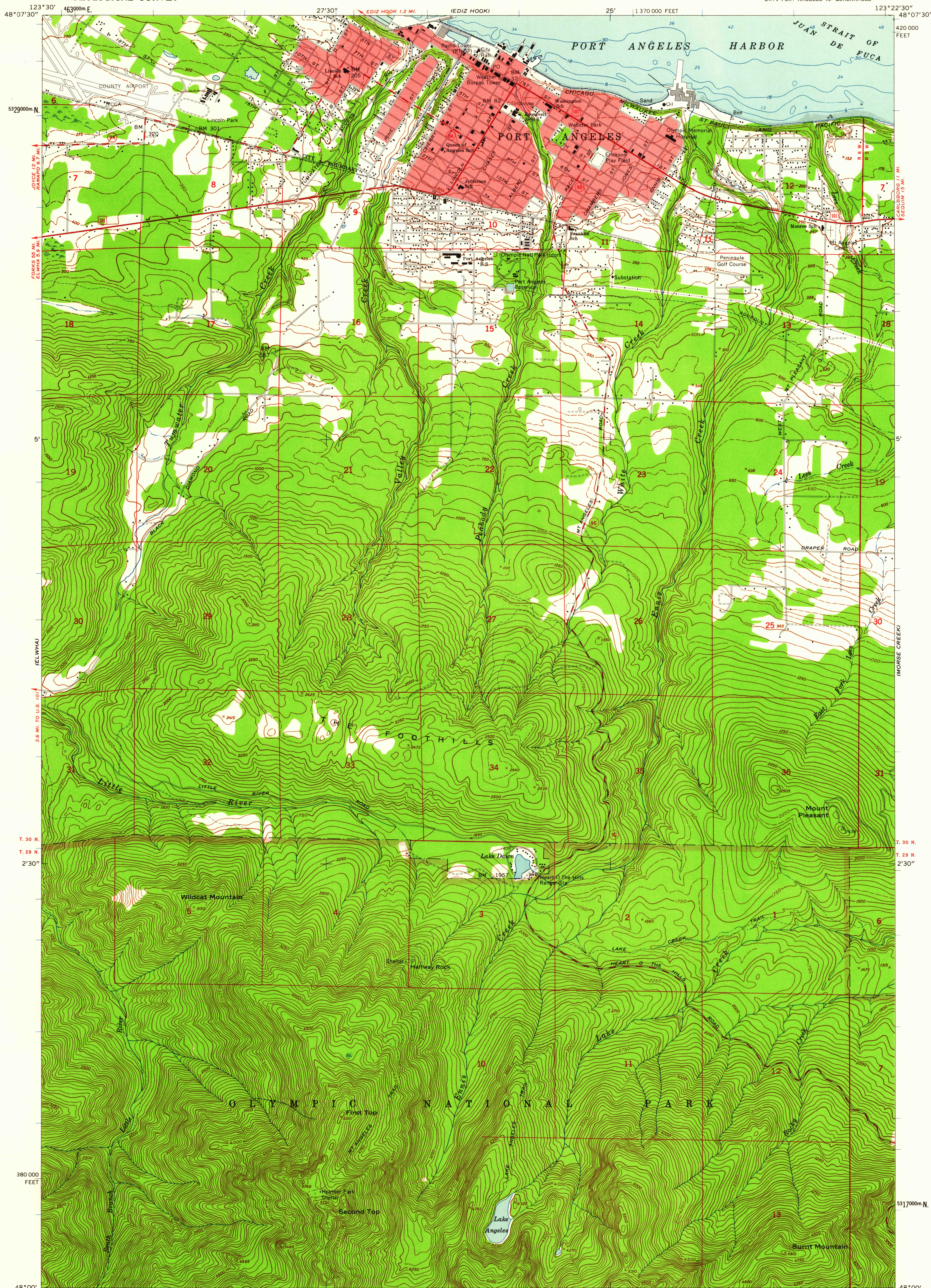


UNITED STATES
DEPARTMENT OF THE INTERIOR
GEOLOGICAL SURVEY

PORT ANGELES QUADRANGLE
WASHINGTON-CLALLAM CO.
7.5 MINUTE SERIES (TOPOGRAPHIC)
SW/4 PORT ANGELES 15' QUADRANGLE



Mapped by the Army Map Service
Edited and published by the Geological Survey

Control by USGS, USC&GS, and USCE

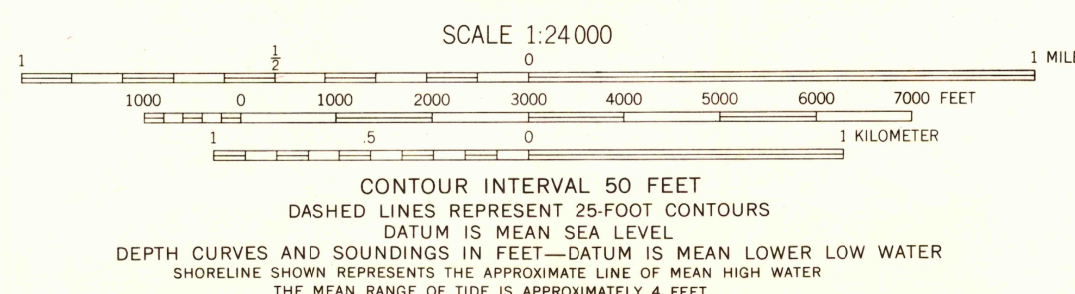
Topography by photogrammetric methods from aerial photographs taken 1943. Field check 1950. Culture revised by USGS from aerial photographs taken 1956. Field check 1961.

Selected hydrographic data compiled from USC&GS Charts 6303 (1956) and 6382 (1958). This information is not intended for navigational purposes.

Polyconic projection. 1927 North American datum 10,000-foot grid based on Washington coordinate system, north zone 1000-meter Universal Transverse Mercator grid ticks, zone 10, shown in blue.

Red tint indicates areas in which only landmark buildings are shown. Land lines unsurveyed in parts of T. 29 N.-Rs. 5 and 6 W.

TRUE NORTH
MAGNETIC NORTH
APPROXIMATE MEAN DECLINATION, 1961



FOR SALE BY U.S. GEOLOGICAL SURVEY, DENVER 25, COLORADO OR WASHINGTON 25, D.C.
A FOLDER DESCRIBING TOPOGRAPHIC MAPS AND SYMBOLS IS AVAILABLE ON REQUEST



ROAD CLASSIFICATION
Heavy-duty ——— Light-duty ———
Medium-duty ——— Unimproved dirt ———
U.S. Route ——— State Route ———

PORT ANGELES, WASH.
USGS SW/4 PORT ANGELES 15' QUADRANGLE
Historical File N4800-W1232.5/7.5
Topographic Division 1961

FILE COPY
TOPOGRAPHIC DIVISION

2990