

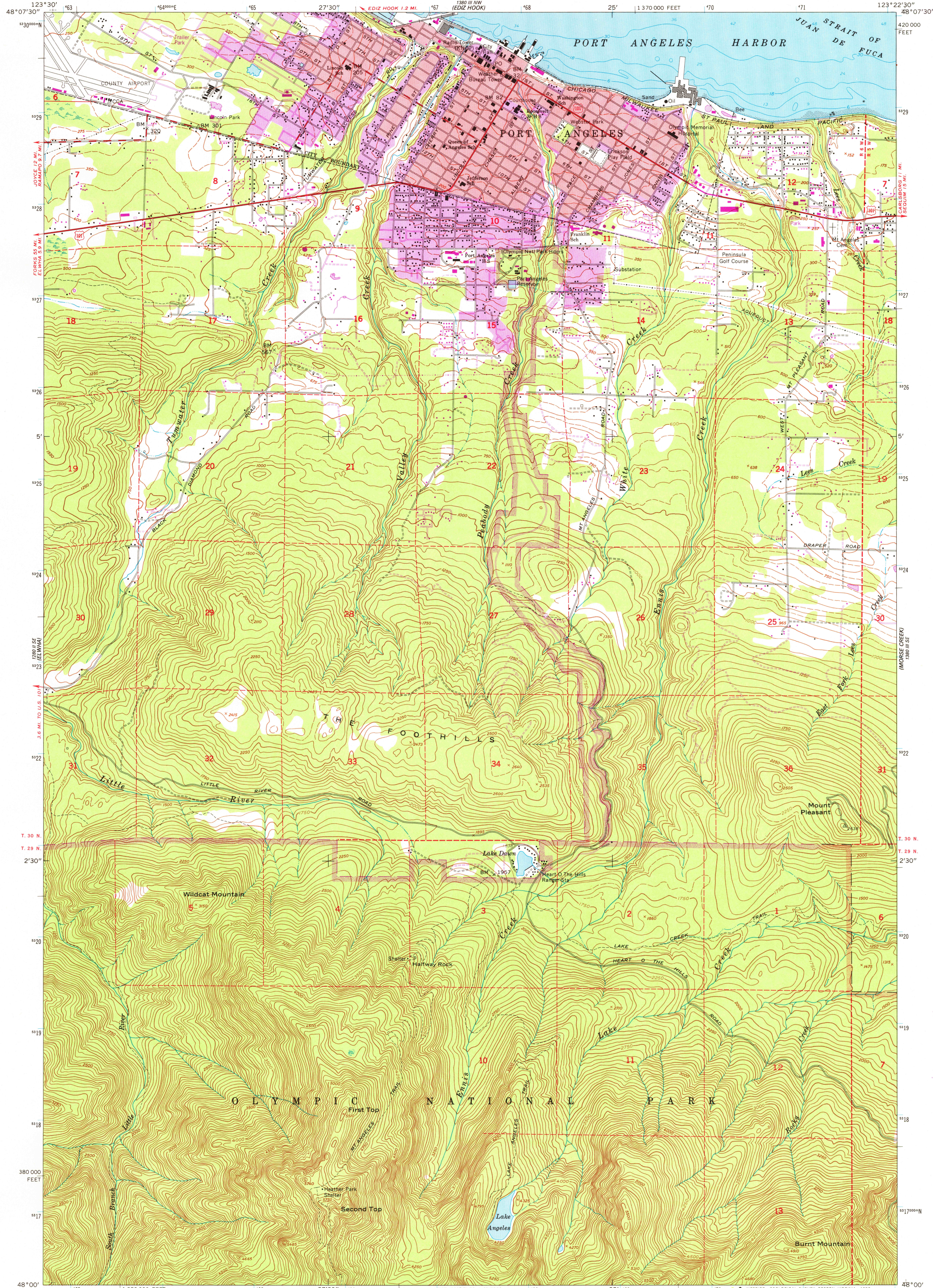
123°30' 48°07'30" N

UNITED STATES  
DEPARTMENT OF THE INTERIOR  
GEOLOGICAL SURVEY



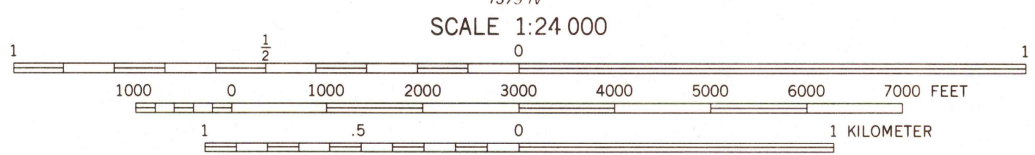
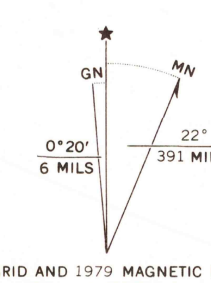
PORT ANGELES QUADRANGLE  
WASHINGTON—CLALLAM CO.  
7.5 MINUTE SERIES (TOPOGRAPHIC)  
SW/4 PORT ANGELES 15' QUADRANGLE

123°22'30" 48°07'30" N



123°30' 48°00' N

Mapped by the Army Map Service  
Edited and published by the Geological Survey  
Control by USGS, NOS/NOAA, and USCE  
Topography by photogrammetric methods from aerial photographs taken 1943. Field check 1950. Culture revised by USGS from aerial photographs taken 1956. Field check 1961  
Selected hydrographic data compiled from NOS/NOAA Charts 6303 (1956) and 6382 (1958). This information is not intended for navigational purposes  
Polyconic projection. 1927 North American Datum 10,000-foot grid based on Washington coordinate system, north zone 1000-meter Universal Transverse Mercator grid ticks, zone 10, shown in blue  
To place on the predicted North American Datum 1983 move the projection lines 24 meters north and 96 meters east as shown by dashed corner ticks



CONTOUR INTERVAL 50 FEET  
DASHED LINES REPRESENT 25-FOOT CONTOURS  
NATIONAL GEODETIC VERTICAL DATUM OF 1929  
DEPTH CURVES AND SOUNDINGS IN FEET—DATUM IS MEAN LOWER LOW WATER  
SHORELINE SHOWN REPRESENTS THE APPROXIMATE LINE OF MEAN HIGH WATER  
THE MEAN RANGE OF TIDE IS APPROXIMATELY 4 FEET

USGS  
Historical File  
Topographic Division



ROAD CLASSIFICATION  
Heavy-duty ——— Light-duty ———  
Medium-duty ——— Unimproved dirt ———  
U.S. Route ——— State Route ———

PORT ANGELES, WASH.  
SW/4 PORT ANGELES 15' QUADRANGLE  
N4800—W12322.5/7.5

Revisions shown in purple compiled by the Geological Survey from aerial photographs taken 1975. This information not field checked. Map edited 1979  
1961  
PHOTOREVISED 1979  
DMA 1380 III SW—SERIES V891

JAN 14 1980  
2575