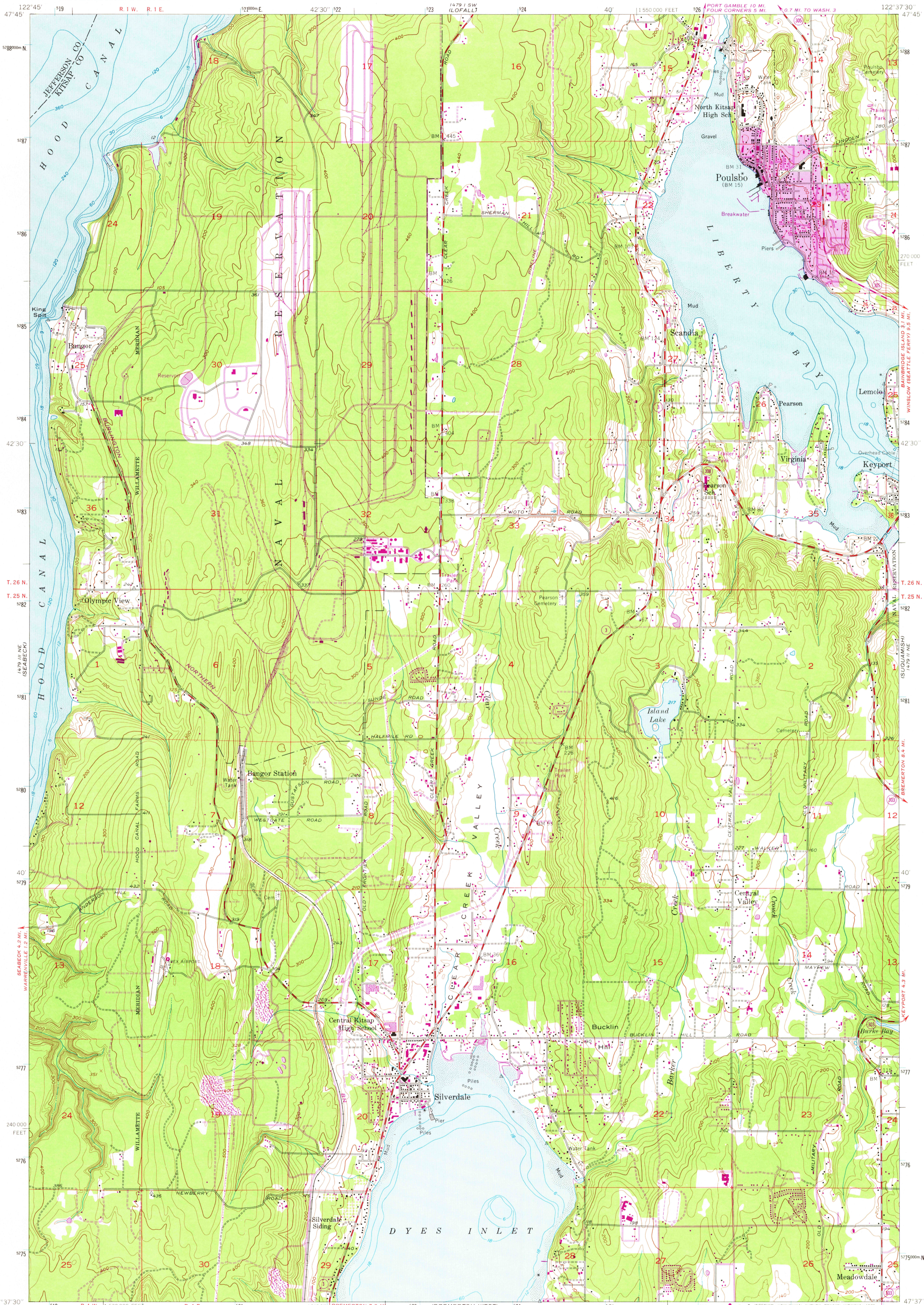


1479 1/2 SE (WILDCAT LAKE) 129 1/2 SE

UNITED STATES DEPARTMENT OF THE INTERIOR GEOLOGICAL SURVEY

POULSBO QUADRANGLE WASHINGTON 7.5 MINUTE SERIES (TOPOGRAPHIC)

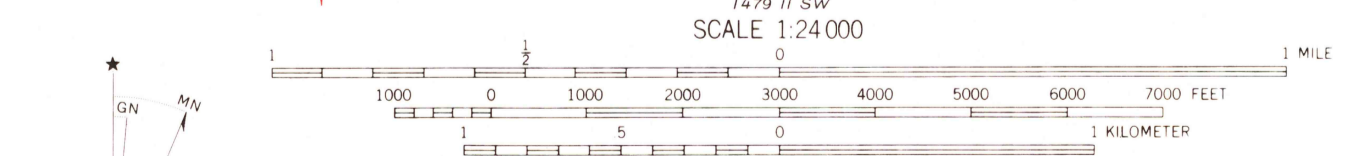
1479 1/2 SE (WILDCAT LAKE) 129 1/2 SE (POULSBO)



1479 1/2 SE (WILDCAT LAKE) 129 1/2 SE

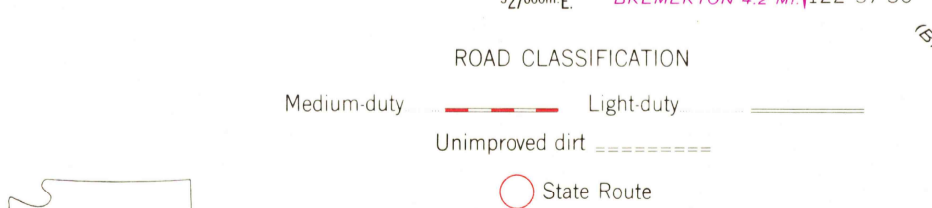
Mapped, edited, and published by the Geological Survey

Control by USGS, USC&GS, and USCE
Topography from aerial photographs by multiplex methods
Aerial photographs taken 1951. Field check 1953
Hydrography compiled from USC&GS charts 6445 and 6446
Polyconic projection. 1927 North American datum
10,000-foot grid based on Washington coordinate system, north zone
1000-meter Universal Transverse Mercator grid ticks, zone 10, shown in blue
Revisions shown in purple compiled from aerial photographs taken 1968 and 1973. This information not field checked
Purple tint indicates extension of urban areas



CONTOUR INTERVAL 20 FEET
NATIONAL GEODETIC VERTICAL DATUM OF 1929
DEPTH CURVES IN FEET—DATUM IS MEAN LOWER LOW WATER
SHORELINE SHOWN REPRESENTS THE APPROXIMATE LINE OF MEAN HIGH WATER
THE AVERAGE RANGE OF TIDES IS APPROXIMATELY 7 FEET IN HOOD CANAL
AND 8 FEET IN LIBERTY BAY AND DYES INLET

UTM GRID AND 1973 MAGNETIC NORTH DECLINATION AT CENTER OF SHEET
THIS MAP COMPLIES WITH NATIONAL MAP ACCURACY STANDARDS
FOR SALE BY U.S. GEOLOGICAL SURVEY, DENVER, COLORADO 80225, OR RESTON, VIRGINIA 22092
A FOLDER DESCRIBING TOPOGRAPHIC MAPS AND SYMBOLS IS AVAILABLE ON REQUEST



ROAD CLASSIFICATION
Medium-duty Light-duty
Unimproved dirt State Route

USGS HISTORICAL FILE TOPOGRAPHIC DIVISION
POULSBO, WASH.
N 4737.5 - W 12237.5 / 7.5
1953
PHOTOREVISED 1968 AND 1973
AMS 1479 II NW—SERIES 9891

FEB 05 1976