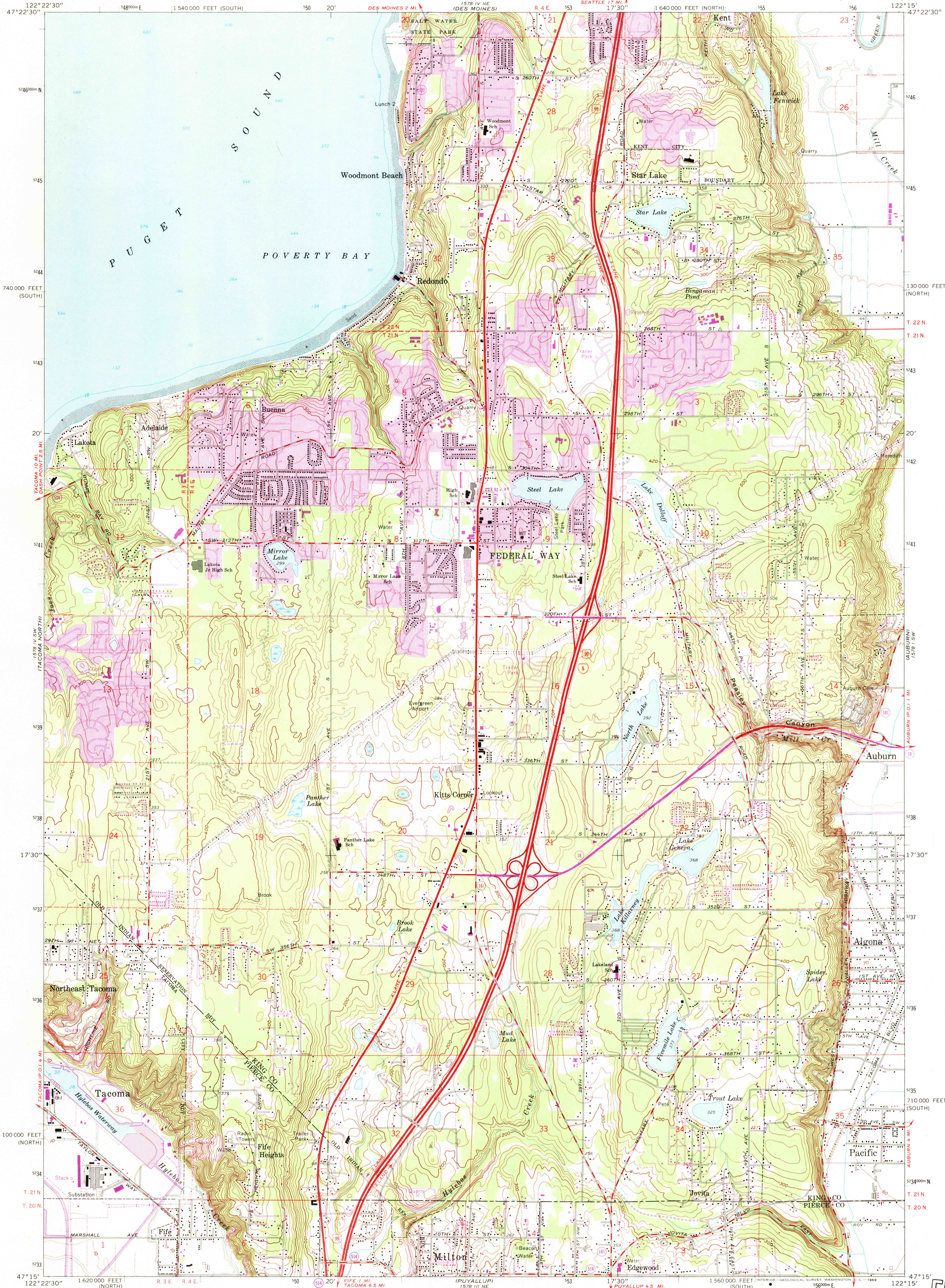


UNITED STATES  
DEPARTMENT OF THE INTERIOR  
GEOLOGICAL SURVEY

POVERTY BAY QUADRANGLE  
WASHINGTON  
7.5 MINUTE SERIES (TOPOGRAPHIC)



Maped, edited and published by the Geological Survey

Control by USGS and USC&GS

Topography by photogrammetric methods from aerial

photographs taken 1957. Field checked 1961

Selected hydrographic data compiled from USC&GS Charts 6407

and 6460 (1958)

This information is not intended for navigational purposes

Polyconic projection. 1927 North American datum

10,000-foot grids based on Washington coordinate system,

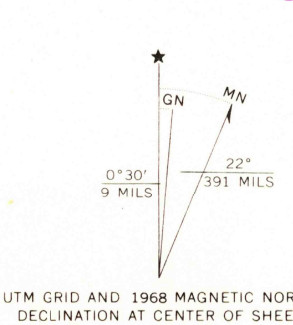
north and south zones

1000-meter Universal Transverse Mercator grid ticks,

zone 10, shown in blue

Dashed land lines indicate approximate locations

Fine red dashed lines indicate selected fence lines



SCALE 1:24,000  
CONTOUR INTERVAL 20 FEET  
DOTTED LINES REPRESENT 10-FOOT CONTOURS  
DATUM IS MEAN SEA LEVEL  
DEPTH CURVES AND SOUNDINGS IN FEET—DATUM IS MEAN LOWER LOW WATER  
SHORELINE SHOWS APPROXIMATE LINE OF MEAN HIGH WATER  
THE MEAN RANGE OF TIDE IS APPROXIMATELY 8 FEET



ROAD CLASSIFICATION  
Heavy-duty ——— Light-duty ———  
Medium-duty ——— Unimproved dirt ———  
Interstate Route U.S. Route State Route

USGS  
Historical File  
Topographic Division  
POVERTY BAY, WASH.  
N4715—W12215/7.5

1961  
AMS 1578 IV SE—SERIES V891

U.S.G.S.  
FILE COPY  
TOPOGRAPHIC DIVISION

DEC 22 1969