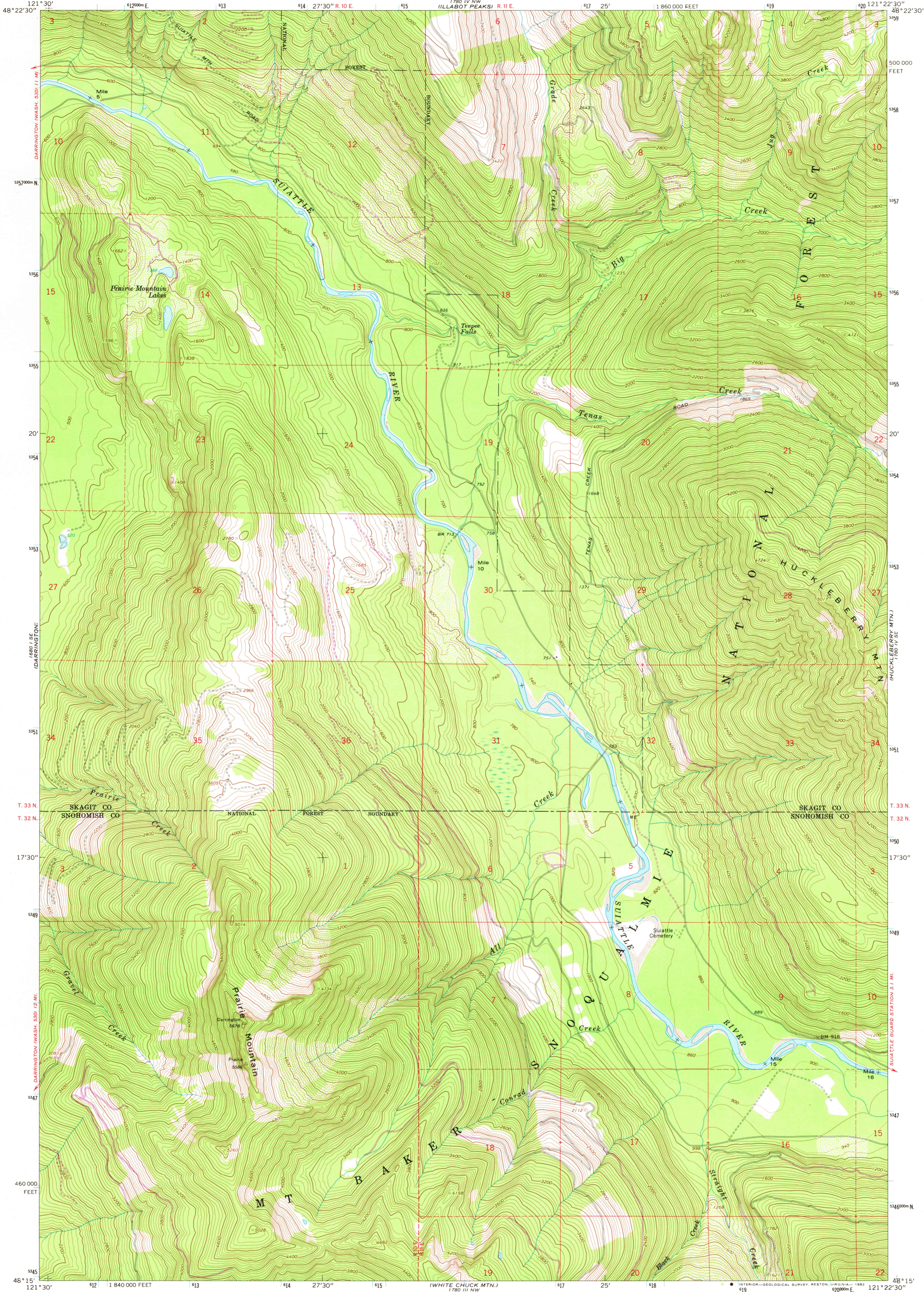


121° 30' W  
48° 22' 30" N  
DARRINGTON WASH. 500 FT. W

UNITED STATES  
DEPARTMENT OF THE INTERIOR  
GEOLOGICAL SURVEY

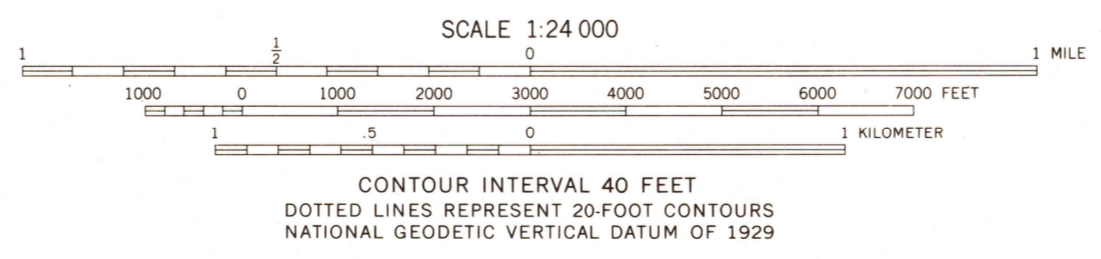
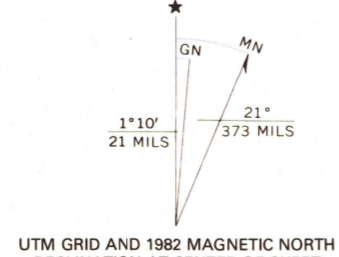
PRAIRIE MTN. QUADRANGLE  
WASHINGTON  
7.5 MINUTE SERIES (TOPOGRAPHIC)

121° 22' 30" W  
48° 22' 30" N  
1780 IV NE  
(SNOWING MTN.)



121° 30' W  
46° 00' N  
DARRINGTON WASH. 500 FT. W

Mapped, edited, and published by the Geological Survey  
Control by USGS and NOS/NOAA  
Topography by photogrammetric methods from aerial photographs taken 1963. Field checked 1966  
Polyconic projection. 1927 North American datum 10,000-foot grid based on Washington coordinate system, north zone  
1000-meter Universal Transverse Mercator grid ticks, zone 10, shown in blue  
To place on the predicted North American Datum 1983 move the projection lines 22 meters north and 91 meters east as shown by dashed corner ticks  
Where omitted, land lines have not been established  
There may be private inholdings within the boundaries of the National or State reservations shown on this map



ROAD CLASSIFICATION  
Light-duty ————— Unimproved dirt - - - - -

PRAIRIE MTN., WASH.  
N4815—W12122.5/7.5

FOR SALE BY U. S. GEOLOGICAL SURVEY, DENVER, COLORADO 80225, OR RESTON, VIRGINIA 22092  
A FOLDER DESCRIBING TOPOGRAPHIC MAPS AND SYMBOLS IS AVAILABLE ON REQUEST

Revisions shown in purple compiled by the U.S. Forest Service from aerial photographs taken 1979 and other source data. This information is not field checked. Map edited 1982  
1966  
PHOTOREVISED 1982  
DMA 1780 IV SW—SERIES V891

RETURN TO:  
USGS MAP HISTORICAL MAP ARCHIVES

JAN 12 1989

2/50