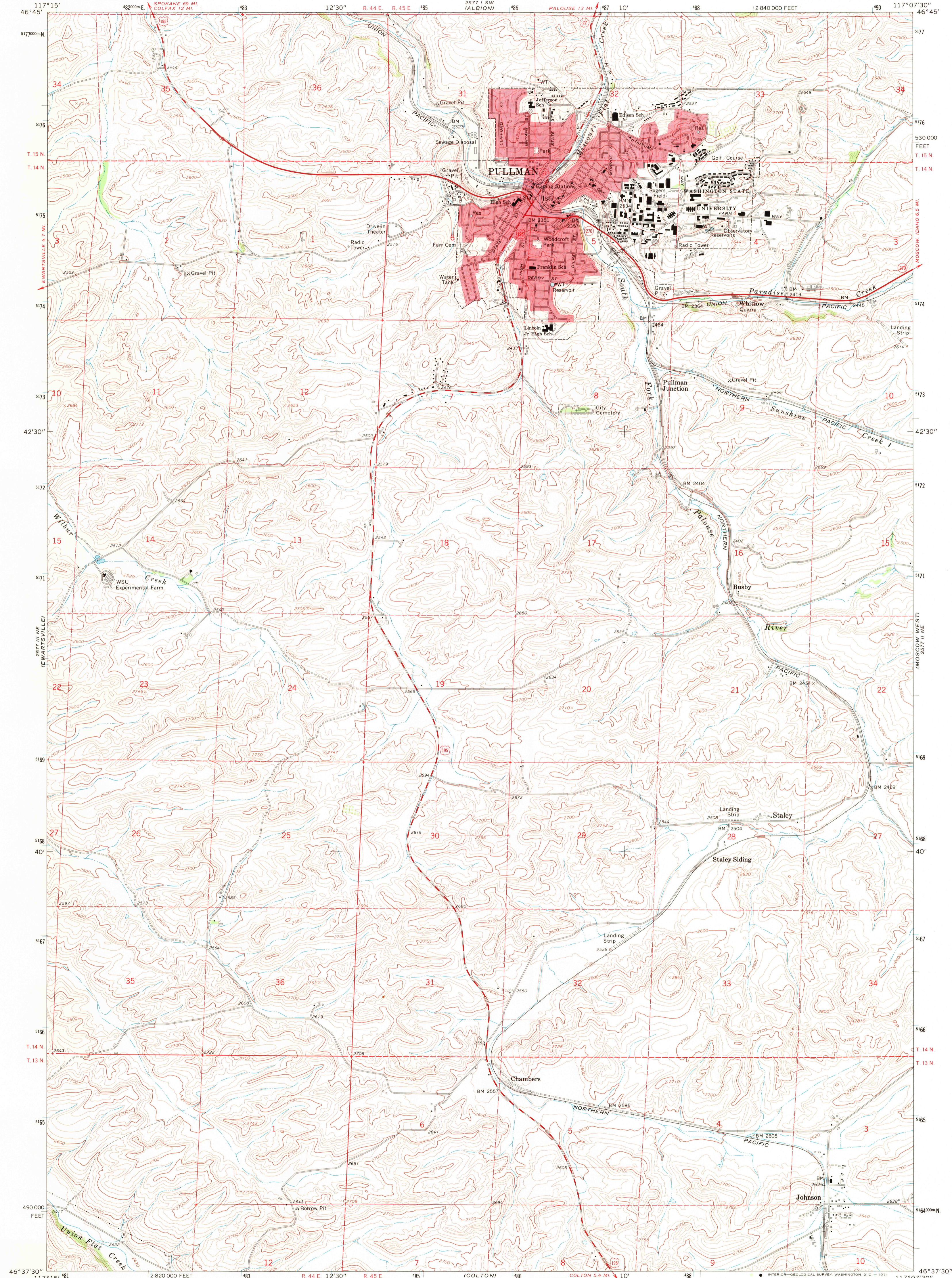
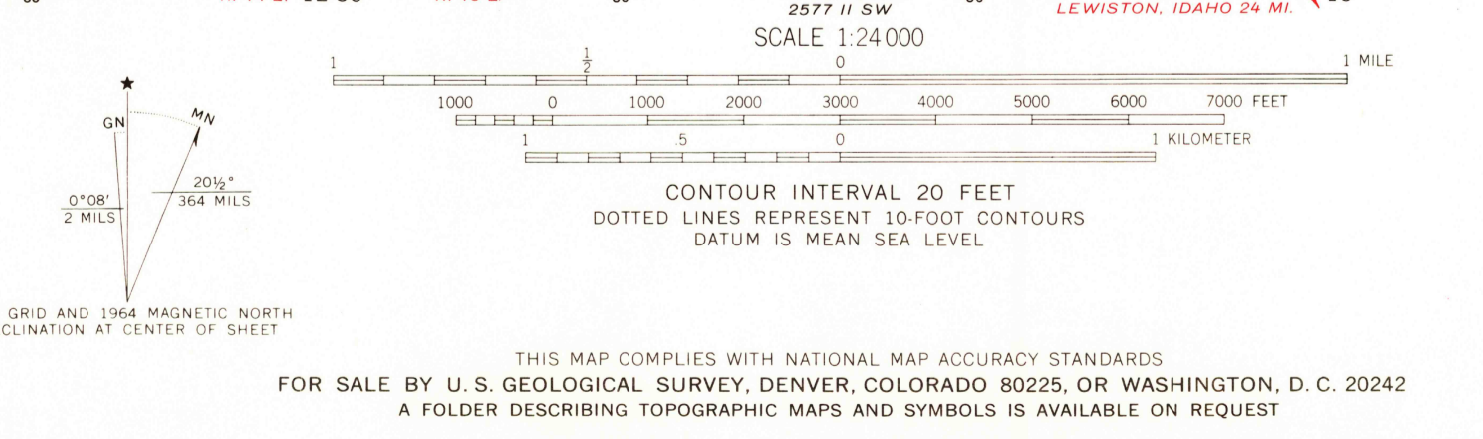


UNITED STATES  
DEPARTMENT OF THE INTERIOR  
GEOLOGICAL SURVEY

PULLMAN QUADRANGLE  
WASHINGTON-WHITMAN CO.  
7.5 MINUTE SERIES (TOPOGRAPHIC)



Mapped, edited, and published by the Geological Survey  
Control by USGS and USC&GS  
Topography by photogrammetric methods from aerial photographs taken 1961. Field checked 1964  
Polyconic projection. 1927 North American datum 10,000-foot grid based on Washington coordinate system, south zone  
1000-meter Universal Transverse Mercator grid ticks, zone 11, shown in blue  
Red tint indicates area in which only landmark buildings are shown  
Fine red dashed lines indicate selected fence lines  
Certain land lines are omitted because of insufficient data



ROAD CLASSIFICATION

- Heavy-duty (thick red line)
- Light-duty (thin red line)
- Medium-duty (dashed red line)
- Unimproved dirt (dotted red line)
- U. S. Route (red circle with number)
- State Route (red circle with number)

QUADRANGLE LOCATION

U.S.G.S. Historical File Topographic Division

PULLMAN, WASH.  
N4637.5-W11707.5/7.5  
1964

AMS 2577 II NW-SERIES V891

U.S.G.S.  
FILE COPY  
TOPOGRAPHIC DIVISION

MAY 4 1971