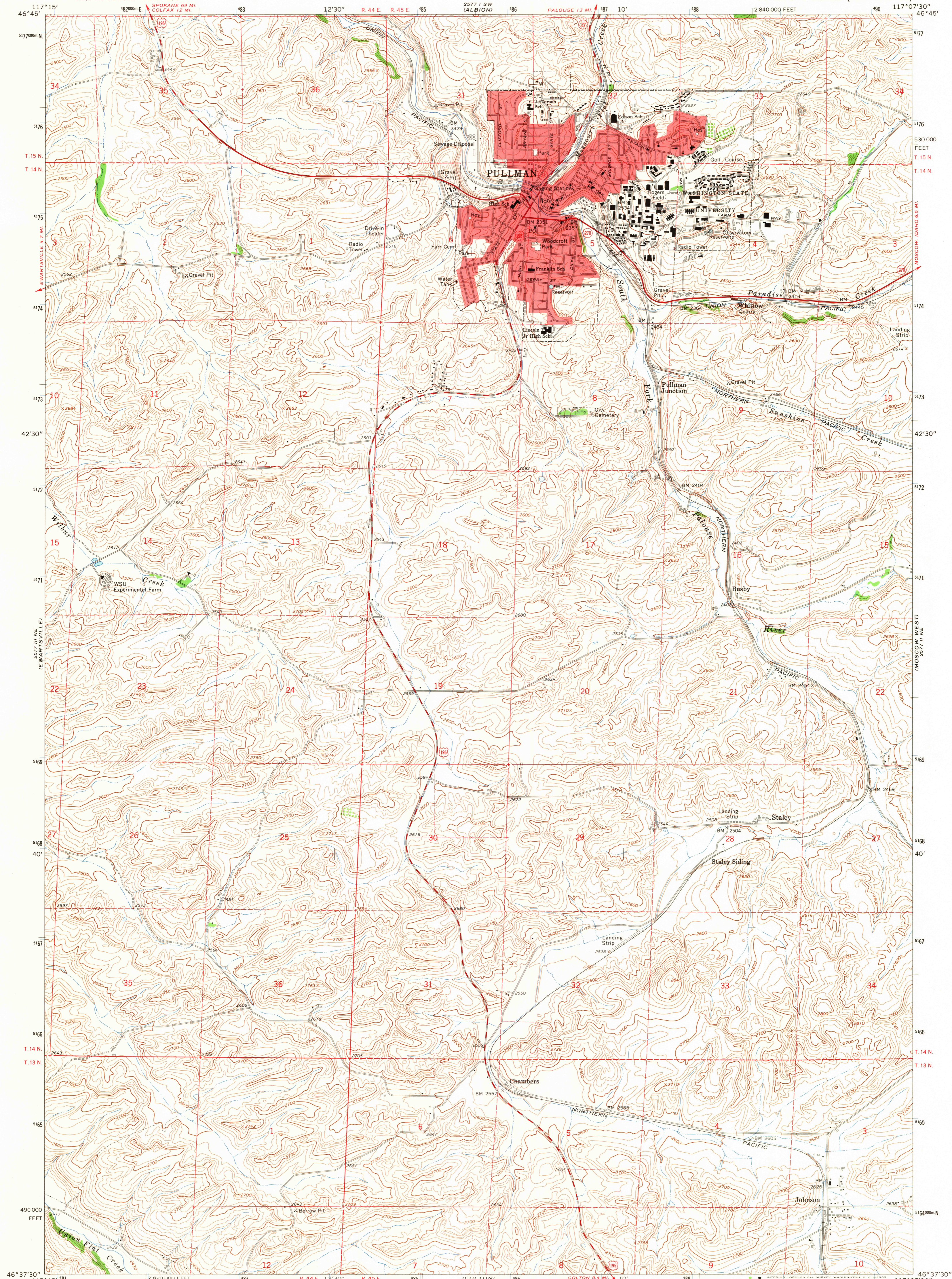
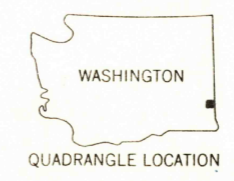
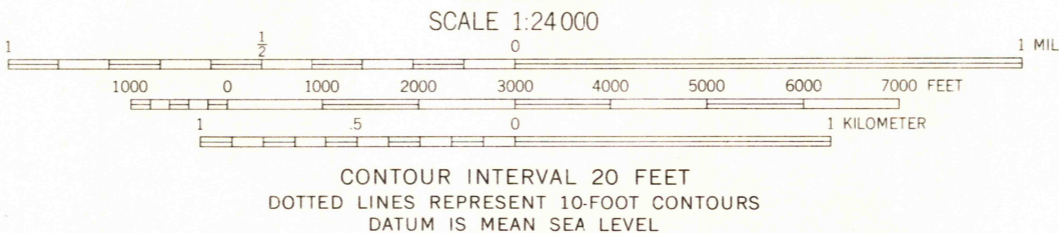
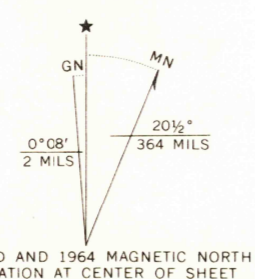


UNITED STATES  
DEPARTMENT OF THE INTERIOR  
GEOLOGICAL SURVEY

PULLMAN QUADRANGLE  
WASHINGTON-WHITMAN CO.  
7.5 MINUTE SERIES (TOPOGRAPHIC)



Mapped, edited, and published by the Geological Survey  
Control by USGS and USC&GS  
Topography by photogrammetric methods from aerial  
photographs taken 1961. Field checked 1964  
Polyconic projection. 1927 North American datum  
10,000-foot grid based on Washington coordinate system,  
south zone  
1000 meter Universal Transverse Mercator grid ticks,  
zone 11, shown in blue  
Red tint indicates area in which only landmark buildings  
are shown  
Fine red dashed lines indicate selected fence lines  
Certain land lines are omitted because of insufficient data



ROAD CLASSIFICATION	
Heavy duty	Light duty
Medium duty	Unimproved dirt
U. S. Route	State Route

USGS  
Historical Files  
Topographic Division  
PULLMAN, WASH.  
N4637.5-W11707.5/7.5  
1964  
AMS 2577 II NW-SERIES V891

U.S.G.S.  
FILE COPY  
TOPOGRAPHIC DIVISION

AUG 10 1965  
3210