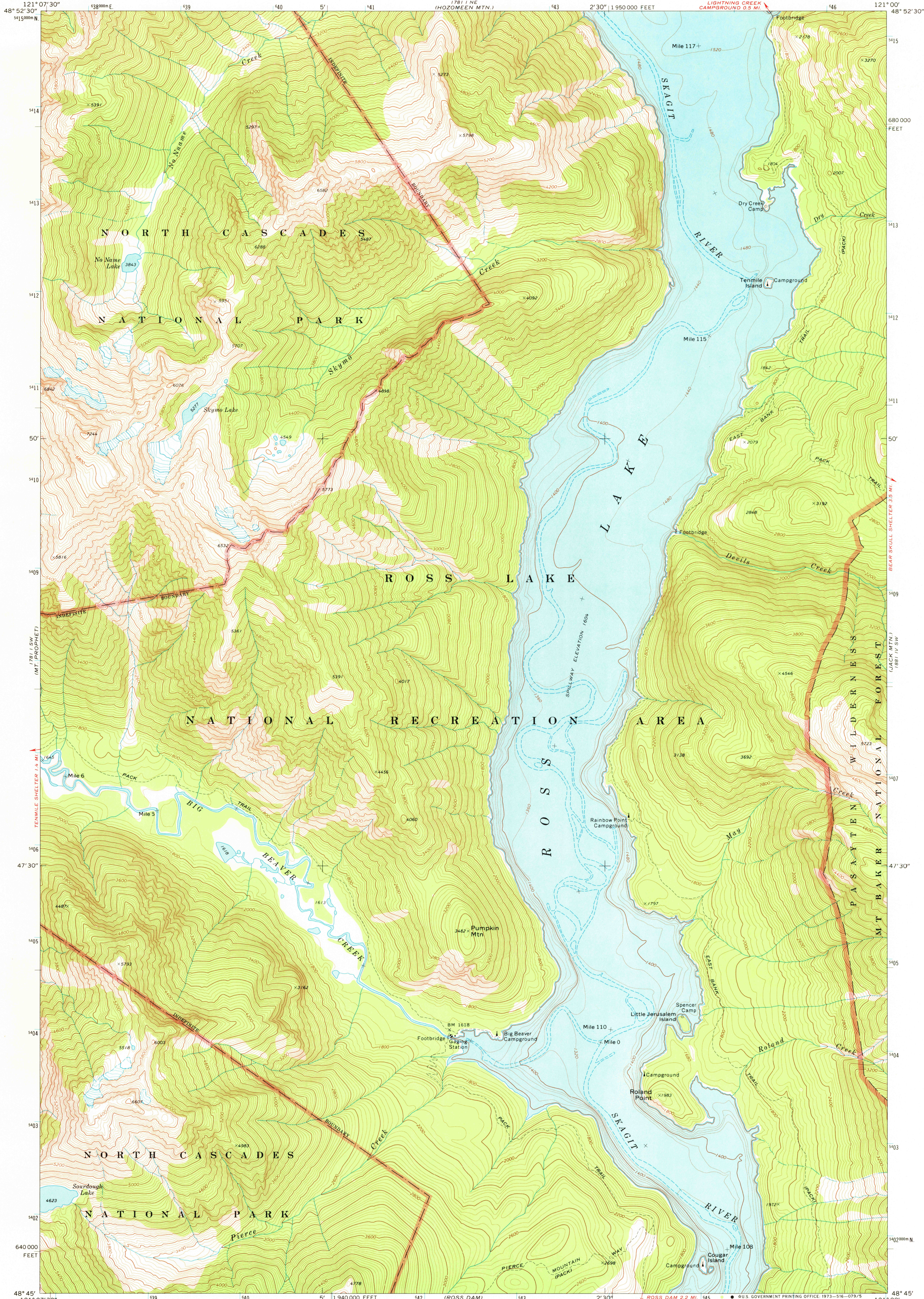


MT 1781 NW
SPICKARD

UNITED STATES
DEPARTMENT OF THE INTERIOR
GEOLOGICAL SURVEY

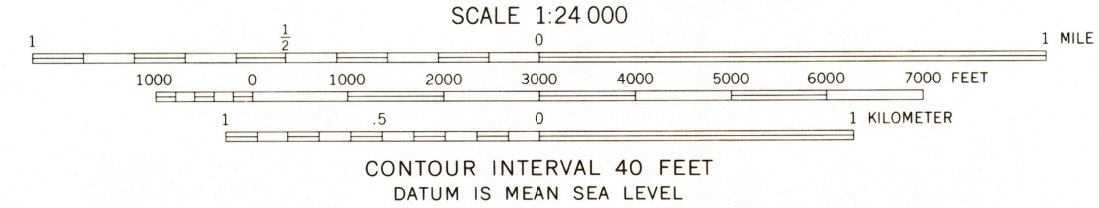
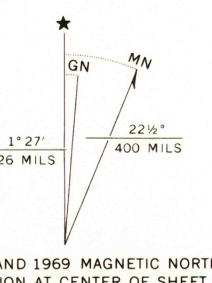
PUMPKIN MTN. QUADRANGLE
WASHINGTON—WHATCOM CO.
7.5 MINUTE SERIES (TOPOGRAPHIC)

MT 1881 NW
SKAGIT PEAK



DIABLO DAM
1781 NW

Mapped, edited, and published by the Geological Survey
Control by USGS and USC&GS
Topography by photogrammetric methods from aerial
photographs taken 1968. Field checked 1969
Underwater contours by City of Seattle
Polyconic projection. 1927 North American datum
10,000-foot grid based on Washington coordinate system,
north zone
1000-meter Universal Transverse Mercator grid ticks,
zone 10, shown in blue
Land lines have not been established in this area



ROAD CLASSIFICATION
Trails

PUMPKIN MTN., WASH.
N4845—W12100/7.5

1969
AMS 1781 1 SE—SERIES V891

FOR SALE BY U.S. GEOLOGICAL SURVEY, DENVER, COLORADO 80225, OR WASHINGTON, D. C. 20242
A FOLDER DESCRIBING TOPOGRAPHIC MAPS AND SYMBOLS IS AVAILABLE ON REQUEST

MAY 18 1973