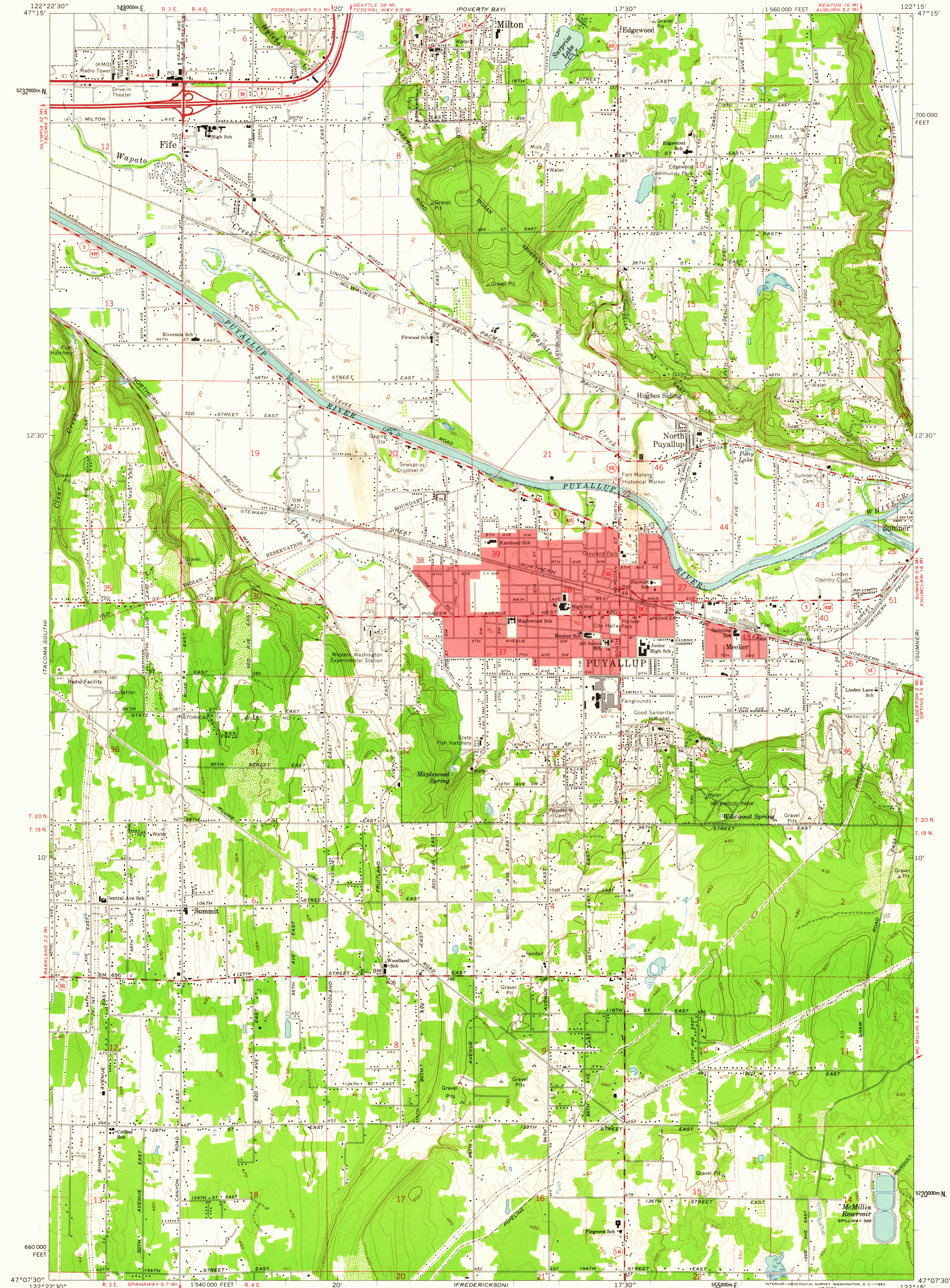
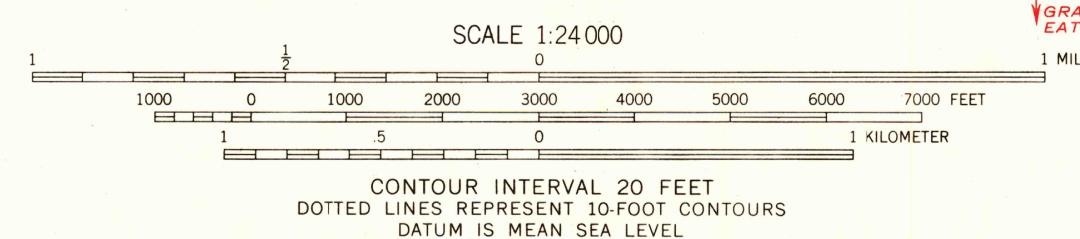


UNITED STATES
DEPARTMENT OF THE INTERIOR
GEOLOGICAL SURVEY

PUYALLUP QUADRANGLE
WASHINGTON—PIERCE CO.
7.5 MINUTE SERIES (TOPOGRAPHIC)
NE/4 TACOMA SOUTH 15' QUADRANGLE



Mapped, edited, and published by the Geological Survey
Control by USGS and USC&GS
Topography by photogrammetric methods from aerial
photographs taken 1957. Field checked 1961
Polyconic projection. 1927 North American datum
10,000-foot grid based on Washington coordinate system, south zone
1000-meter Universal Transverse Mercator grid ticks,
zone 10, shown in blue
Red tint indicates areas in which only landmark buildings are shown
Dashed land lines indicate approximate locations
Fine red dashed lines indicate selected fence lines
APPROXIMATE MEAN
DECLINATION, 1961



THIS MAP COMPLIES WITH NATIONAL MAP ACCURACY STANDARDS
FOR SALE BY U. S. GEOLOGICAL SURVEY, DENVER 25, COLORADO OR WASHINGTON 25, D. C.
A FOLDER DESCRIBING TOPOGRAPHIC MAPS AND SYMBOLS IS AVAILABLE ON REQUEST



ROAD CLASSIFICATION
Heavy-duty ——— Light-duty ———
Medium-duty ——— Unimproved dirt ———
Interstate Route U. S. Route State Route

USGS
Historical File
Topographic Division
PUYALLUP, WASH.
NE/4 TACOMA SOUTH 15' QUADRANGLE
N4707.5—W12215/7.5
1961

U.S.G.S.
FILE COPY
TOPOGRAPHIC DIVISION

SEP 2 5 1962

3520