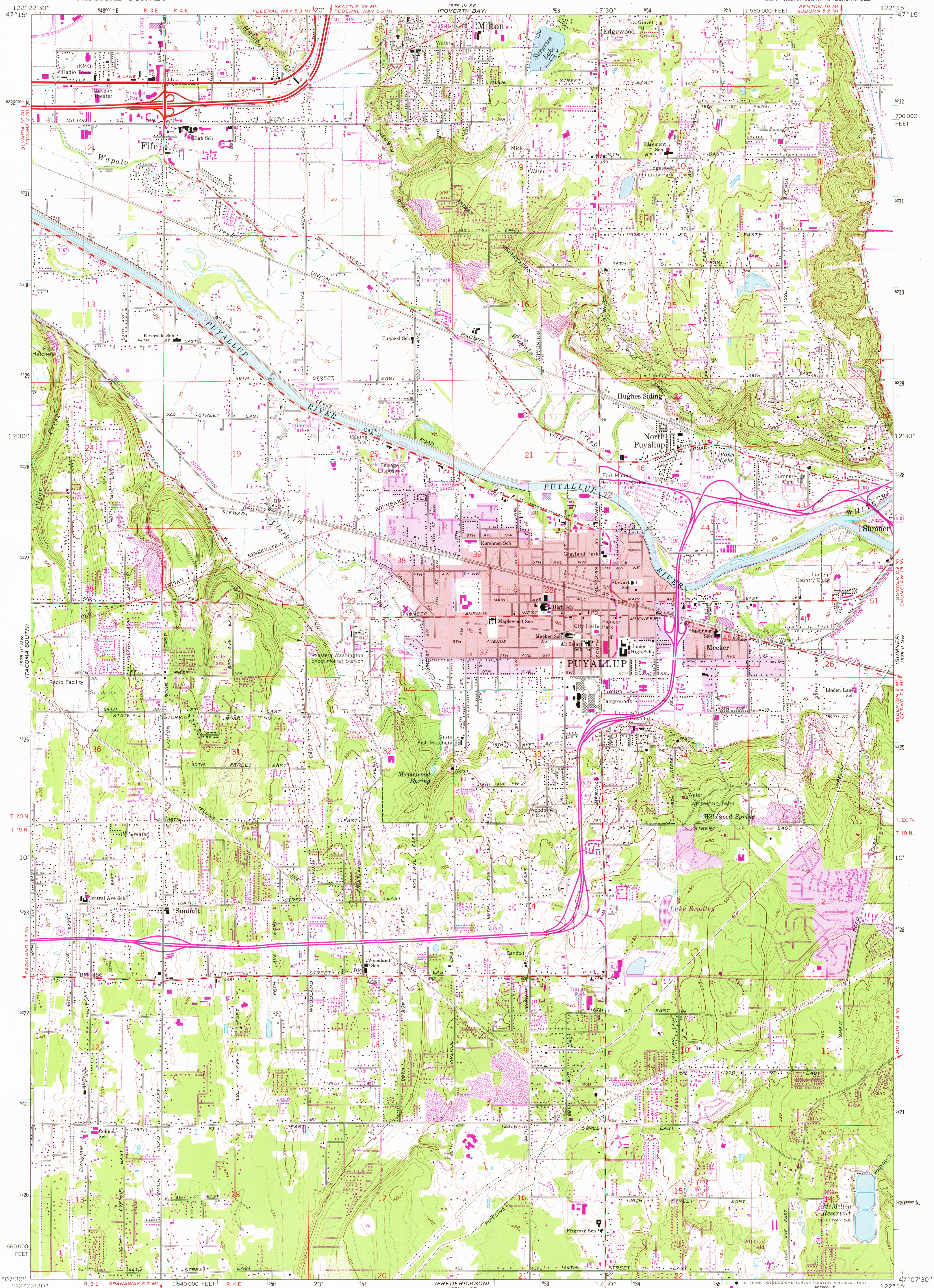


UNITED STATES  
DEPARTMENT OF THE INTERIOR  
GEOLOGICAL SURVEY

PUYALLUP QUADRANGLE  
WASHINGTON—PIERCE CO.  
7.5 MINUTE SERIES (TOPOGRAPHIC)  
NE/4 TACOMA SOUTH 15' QUADRANGLE



Mapped, edited, and published by the Geological Survey

Control by USGS and NOS/NOAA

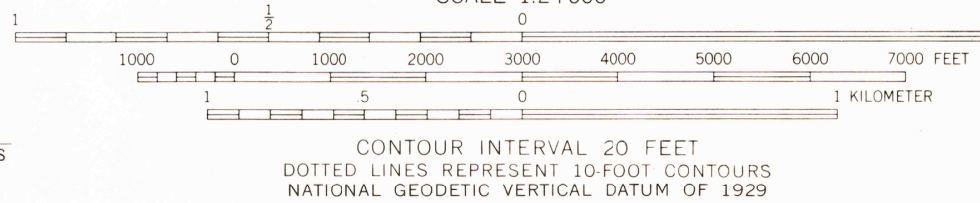
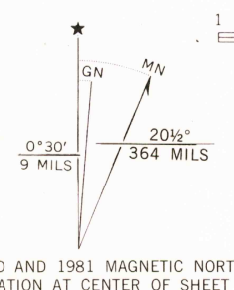
Topography by photogrammetric methods from aerial photographs taken 1957. Field checked 1961

Polyconic projection. 10,000-foot grid ticks based on Washington coordinate system, south zone. 1000-meter Universal Transverse Mercator grid ticks, zone 10, shown in blue 1927 North American Datum. To place on the predicted North American Datum 1983 move the projection lines 23 meters north and 93 meters east as shown by dashed corner ticks

Red tint indicates areas in which only landmark buildings are shown

Dashed land lines indicate approximate locations

Fine red dashed lines indicate selected fence lines



NATIONAL GEODETIC DATUM OF 1929  
THIS MAP COMPLIES WITH NATIONAL MAP ACCURACY STANDARDS  
FOR SALE BY U. S. GEOLOGICAL SURVEY, DENVER, COLORADO 80225, OR RESTON, VIRGINIA 22092  
A FOLDER DESCRIBING TOPOGRAPHIC MAPS AND SYMBOLS IS AVAILABLE ON REQUEST



QUADRANGLE LOCATION

ROAD CLASSIFICATION  
Heavy-duty ——— Light-duty ———  
Medium-duty ——— Unimproved dirt ———  
Interstate Route ——— State Route ———

PUYALLUP, WASH.  
NE/4 TACOMA SOUTH 15' QUADRANGLE  
N4707.5—W1215.7/5

1961  
PHOTOREVISED 1981  
DMA 1578 III NE—SERIES V891

USGS  
HISTORICAL FILE  
NATIONAL MAPING DIVISION

SEP 28 1981

2650