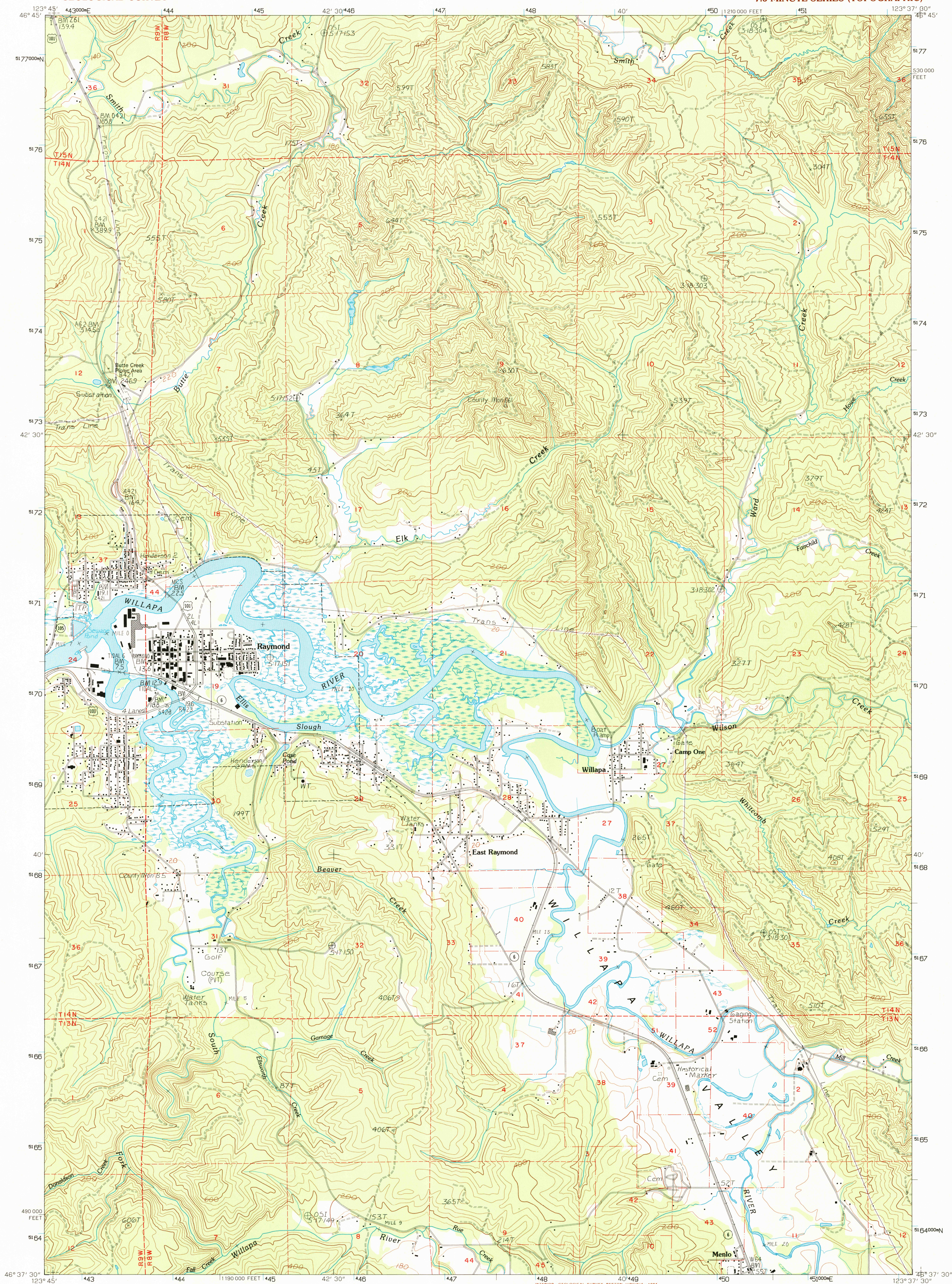


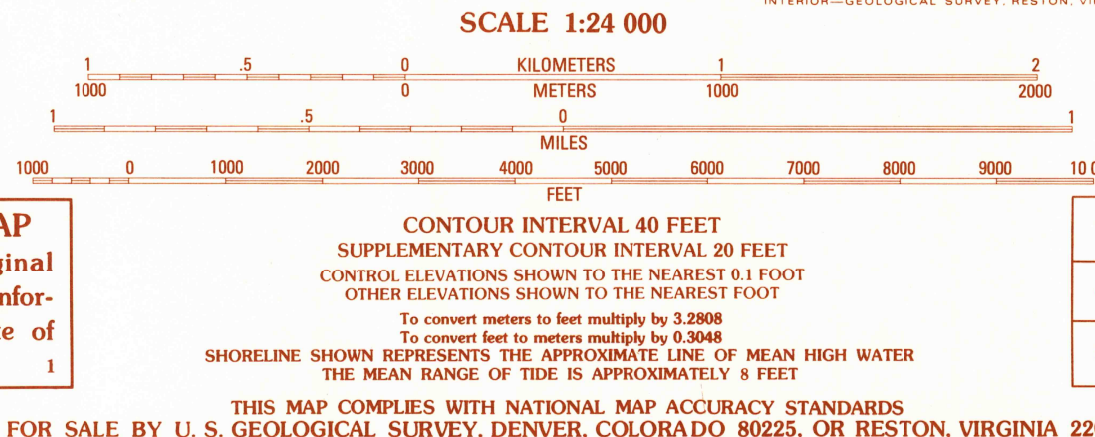
UNITED STATES  
DEPARTMENT OF THE INTERIOR  
GEOLOGICAL SURVEY

RAYMOND QUADRANGLE  
WASHINGTON—PACIFIC CO.  
7.5 MINUTE SERIES (TOPOGRAPHIC)



PRODUCED BY THE UNITED STATES GEOLOGICAL SURVEY  
CONTROL BY ..... USGS, NOS/NOAA  
COMPILED FROM AERIAL PHOTOGRAPHS TAKEN ..... 1981 AND 1983  
FIELD CHECKED ..... 1985. MAP EDITED ..... 1986  
PROJECTION ..... LAMBERT CONFORMAL CONIC  
BLUE 1000-METER UNIVERSAL TRANSVERSE MERCATOR TICS ..... ZONE 10  
10 000-FOOT STATE GRID TICS ..... NORTH AMERICAN DATUM OF 1927 (NAD 27)  
UTM GRID DECLINATION ..... 19° EAST  
1994 MAGNETIC NORTH DECLINATION ..... 19° EAST  
VERTICAL DATUM ..... NATIONAL GEODETIC VERTICAL DATUM OF 1929  
HORIZONTAL DATUM ..... NORTH AMERICAN DATUM OF 1927 (NAD 27)  
North American Datum of 1983 (NAD 83) is shown by dashed  
corner ticks. The values of the shift between NAD 27 and NAD  
83 for 7.5-minute intersections are obtainable from National  
Geodetic Survey NADCON software  
There may be private inholdings within the boundaries of any  
Federal and State reservations shown on this map  
No distinction made between houses, barns, and other buildings  
Photoinsected from 1990 source; no major culture or drainage  
changes observed. Boundaries and names verified 1994

**PROVISIONAL MAP**  
Produced from original  
manuscript drawings. Infor-  
mation shown as of date of  
photography.



QUADRANGLE LOCATION

1	2	3	1	Aberdeen SE
2	3	4	2	Elkhorn Creek
3	4	5	3	Brooklyn
4	5	6	4	South Bend
5	6	7	5	East of Raymond
6	7	8	6	North Nemah
7	8		7	Menlo
8			8	Leban

ADJOINING 7.5' QUADRANGLE NAMES

**ROAD LEGEND**

Improved Road .....  
Unimproved Road .....  
Trail .....  
Interstate Route .....  
U.S. Route .....  
State Route .....

**RAYMOND, WASH.**  
PROVISIONAL EDITION 1986

46123-F6-TF-024  
MINOR REVISION 1994

