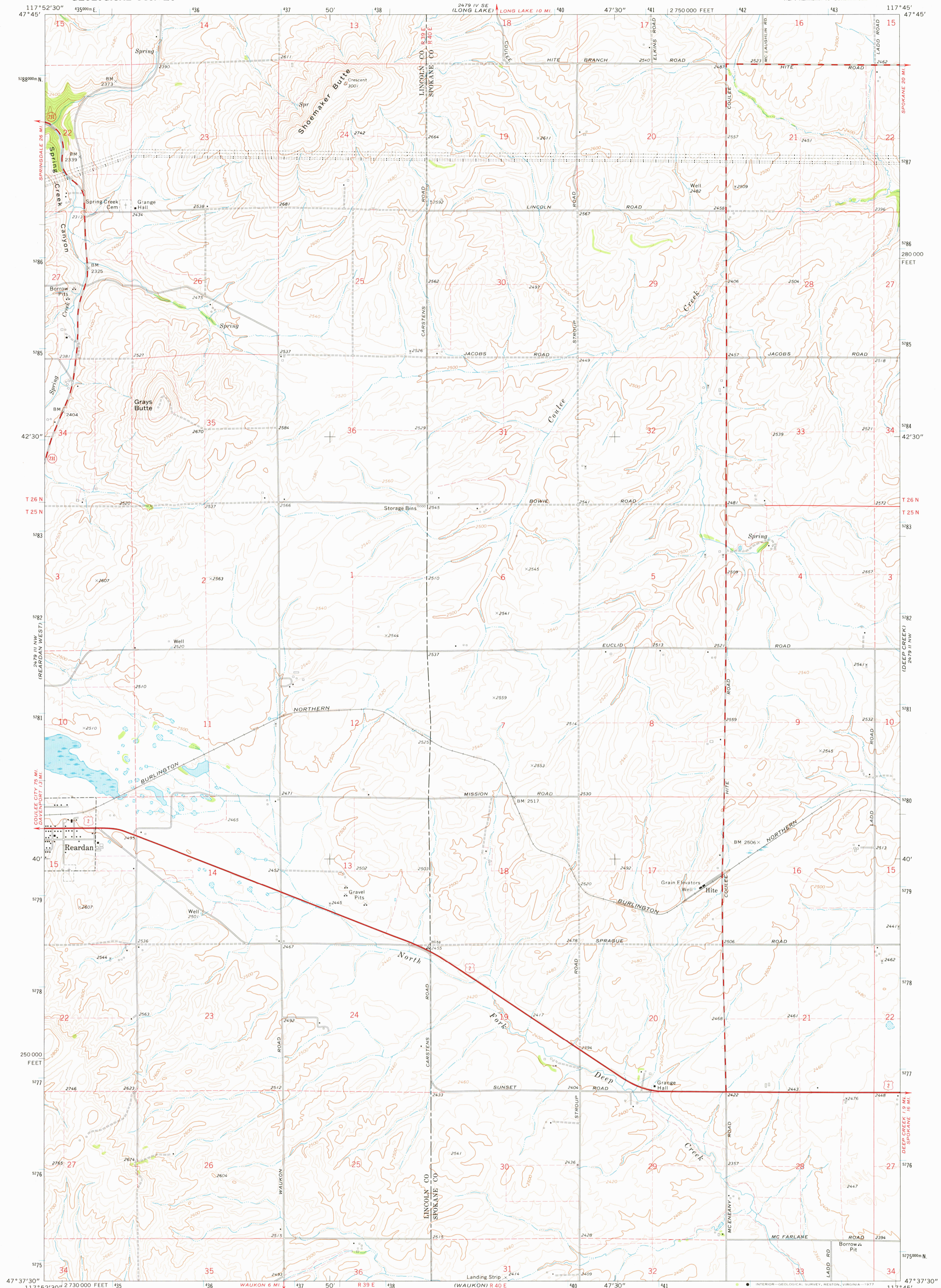


UNITED STATES  
DEPARTMENT OF THE INTERIOR  
GEOLOGICAL SURVEY

REARDAN EAST QUADRANGLE  
WASHINGTON  
7.5 MINUTE SERIES (TOPOGRAPHIC)



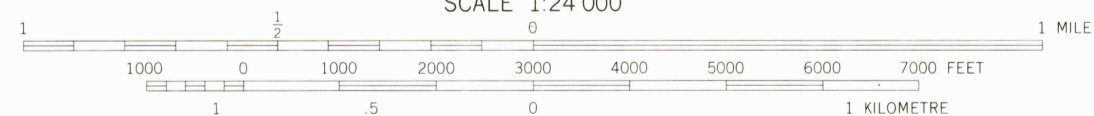
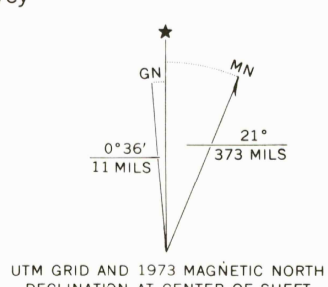
Mapped, edited, and published by the Geological Survey

Control by USGS and NOS/NOAA

Topography by photogrammetric methods from aerial photographs taken 1972. Field checked 1973

Projection and 10,000-foot grid ticks: Washington coordinate system, north zone (Lambert conformal conic)  
1000-metre Universal Transverse Mercator grid ticks, zone 11, shown in blue. 1927 North American datum

Fine red dashed lines indicate selected fence lines



SCALE 1:24 000  
CONTOUR INTERVAL 20 FEET  
NATIONAL GEODETIC VERTICAL DATUM OF 1929



ROAD CLASSIFICATION

Primary highway, hard surface	Light-duty road, hard or improved surface
Secondary highway, hard surface	Unimproved road
Interstate Route	U. S. Route
	State Route

REARDAN EAST, WASH.  
NE/4 REARDAN 15' QUADRANGLE  
N4737.5—W11745/7.5

USGS  
Historical File  
Topographic Division  
1973  
AMS 2479 III NE—SERIES V891

THIS MAP COMPLIES WITH NATIONAL MAP ACCURACY STANDARDS  
FOR SALE BY U. S. GEOLOGICAL SURVEY, DENVER, COLORADO 80225, OR RESTON, VIRGINIA 22092  
A FOLDER DESCRIBING TOPOGRAPHIC MAPS AND SYMBOLS IS AVAILABLE ON REQUEST

APR 13 1977  
3250