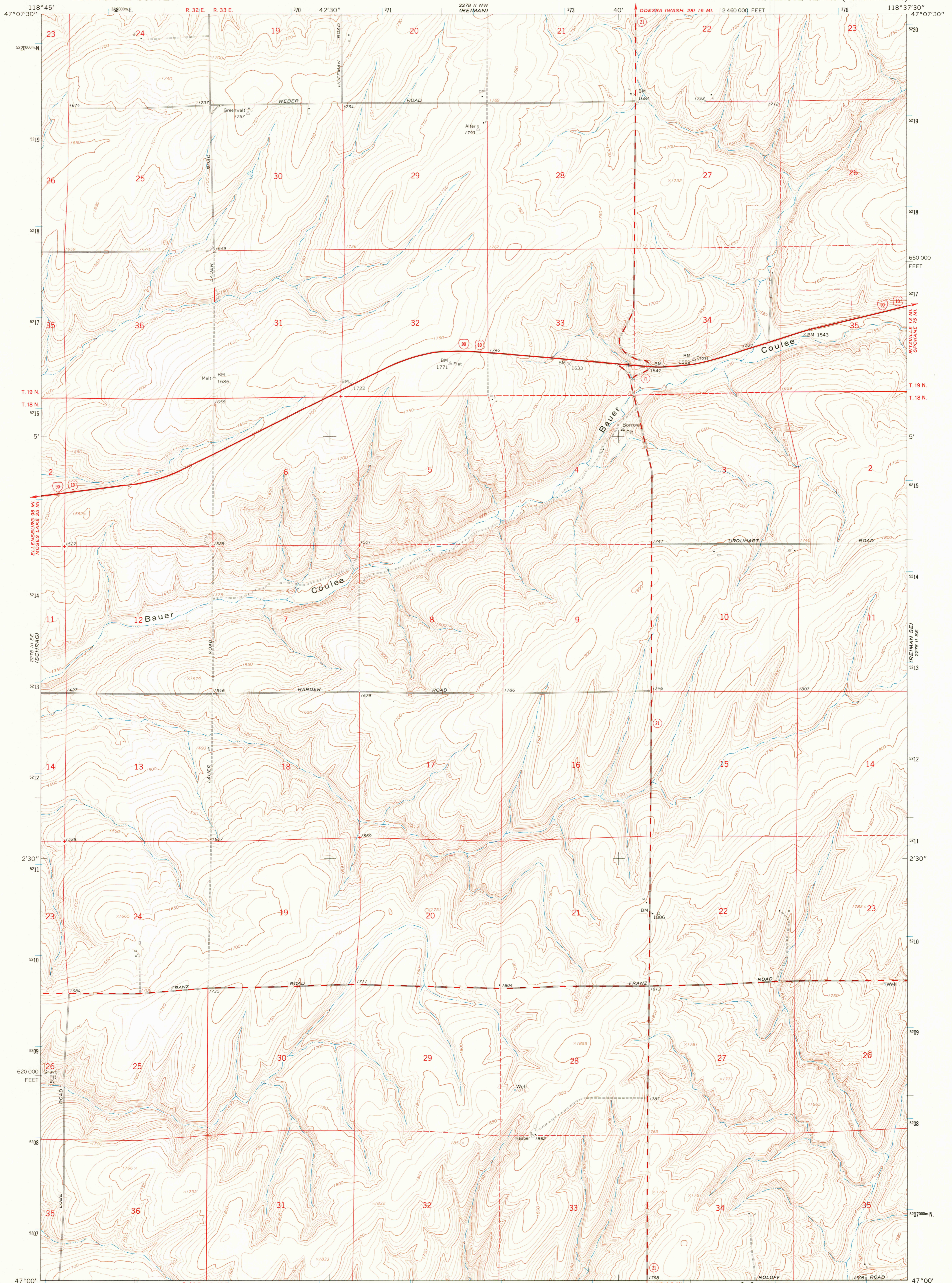


2278 III SE (SCHRAEG)

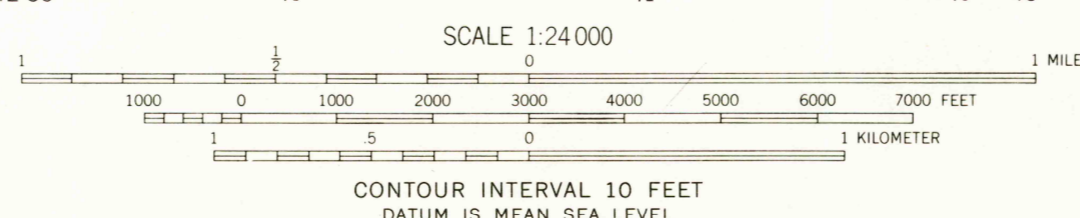
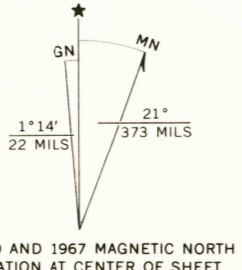
UNITED STATES DEPARTMENT OF THE INTERIOR GEOLOGICAL SURVEY

REIMAN SW QUADRANGLE WASHINGTON-ADAMS CO. 7.5 MINUTE SERIES (TOPOGRAPHIC)

2278 II NW (REIMAN)



Mapped, edited, and published by the Geological Survey Control by USGS and USC&GS Topography by photogrammetric methods from aerial photographs taken 1966. Field checked 1967 Polyconic projection. 1927 North American datum 10,000-foot grid based on Washington coordinate system, south zone 1000-meter Universal Transverse Mercator grid ticks, zone 11, shown in blue Fine red dashed lines indicate selected fence lines



CONTOUR INTERVAL 10 FEET DATUM IS MEAN SEA LEVEL



ROAD CLASSIFICATION table with categories: Heavy-duty, Light-duty, Medium-duty, Unimproved dirt, Interstate Route, U.S. Route, State Route.

USGS Historical File Topographic Division REIMAN SW, WASH. N4700-W11837.5/7.5 1967

U.S.G.S. FILE COPY TOPOGRAPHIC DIVISION

THIS MAP COMPLIES WITH NATIONAL MAP ACCURACY STANDARDS FOR SALE BY U.S. GEOLOGICAL SURVEY, DENVER, COLORADO 80225, OR WASHINGTON, D.C. 20242 A FOLDER DESCRIBING TOPOGRAPHIC MAPS AND SYMBOLS IS AVAILABLE ON REQUEST

2690 JAN 6 1970

AMS 2278 II SW-SERIES V891