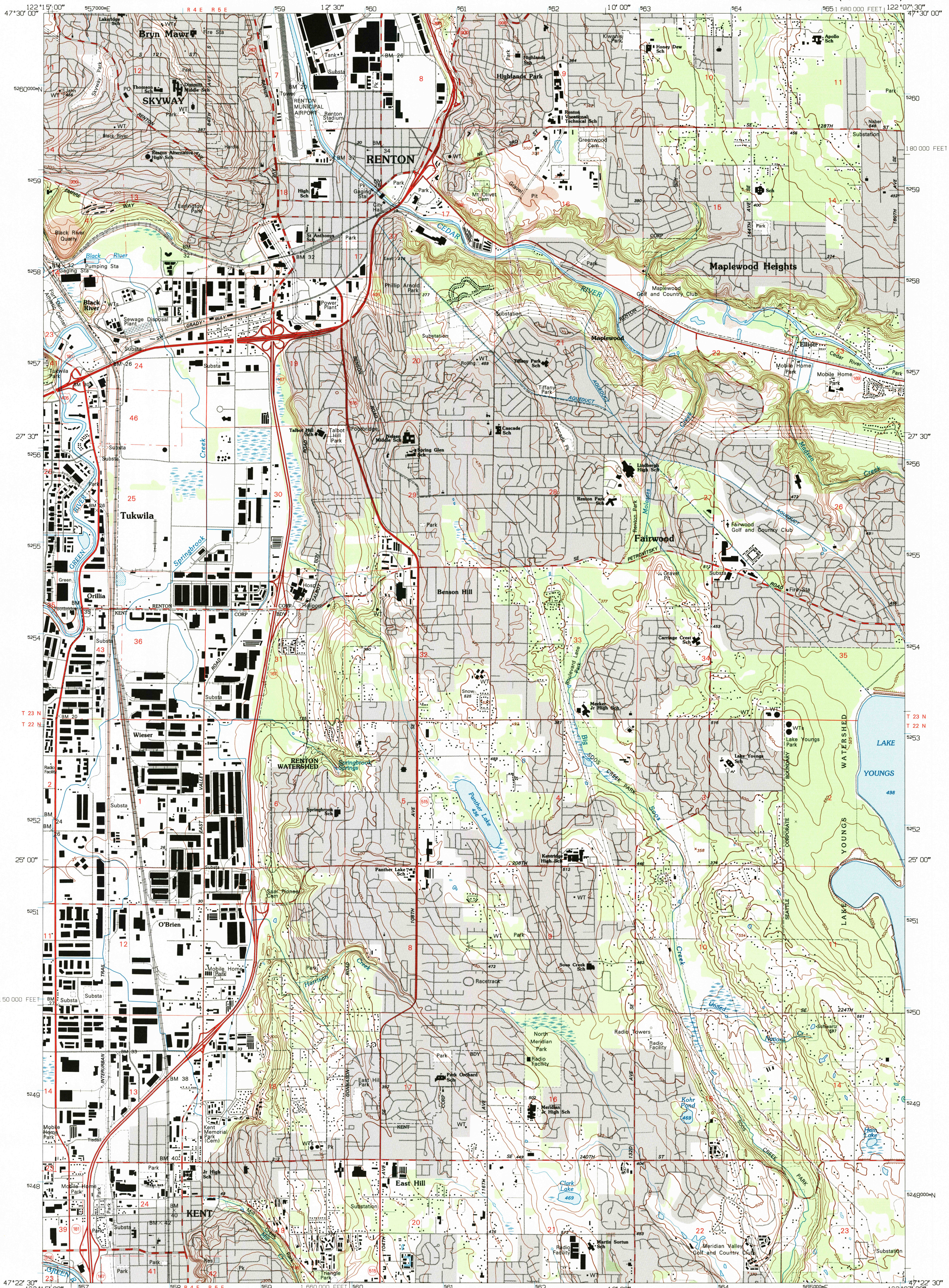


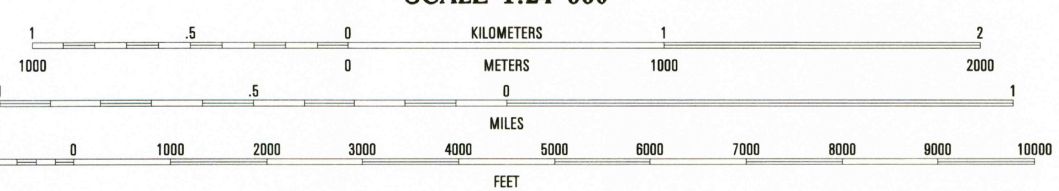
UNITED STATES  
DEPARTMENT OF THE INTERIOR  
GEOLOGICAL SURVEY

RENTON QUADRANGLE  
WASHINGTON-KING CO.  
7.5 MINUTE SERIES (TOPOGRAPHIC)



Produced by the United States Geological Survey  
Control by USGS, NOS/NOAA, and USCE  
Compiled from aerial photographs taken 1943. Field checked 1949  
Revised from aerial photographs taken 1990 and other sources.  
Map edited 1994. Contours and land elevations have not been  
revised and may conflict with other content.  
North American Datum of 1927 (NAD 27). Projection and  
blue 1000-meter ticks: Universal Transverse Mercator, zone 10  
10 000-foot ticks: Washington Coordinate System, south zone  
North American Datum of 1983 (NAD 83) is shown by dashed  
corner ticks. The values of the shift between NAD 27 and  
NAD 83 for 7.5-minute intersections are obtainable from  
National Geodetic Survey NADCON Software.  
There may be private inholdings within the boundaries  
of the National or State reservations shown on this map.  
Gray tint indicates areas in which only landmark buildings are shown.

UTM GRID AND 1994 MAGNETIC NORTH  
DECLINATION AT CENTER OF SHEET



CONTOUR INTERVAL 25 FEET  
NATIONAL GEODETIC VERTICAL DATUM OF 1929  
TO CONVERT FEET TO METERS MULTIPLY BY 0.3048  
TO CONVERT METERS TO FEET MULTIPLY BY 3.2808

THIS MAP COMPLIES WITH NATIONAL MAP ACCURACY STANDARDS  
FOR SALE BY U.S. GEOLOGICAL SURVEY  
DENVER, COLORADO 80225, OR RESTON, VIRGINIA 22092  
A FOLDER DESCRIBING TOPOGRAPHIC MAPS AND SYMBOLS IS AVAILABLE ON REQUEST



QUADRANGLE LOCATION

1	2	3
4	5	6
7	8	9

ADJOINING 7.5' QUADRANGLE NAMES

ROAD CLASSIFICATION  
Primary highway  
hard surface .....  
Secondary highway  
hard surface .....  
Light-duty road, hard or  
improved surface .....  
Unimproved road .....

Interstate Route U.S. Route State Route

RENTON, WA  
47122-D2-TF-024

1949  
REVISED 1994  
DMA 1578 1 NW-SERIES V891

