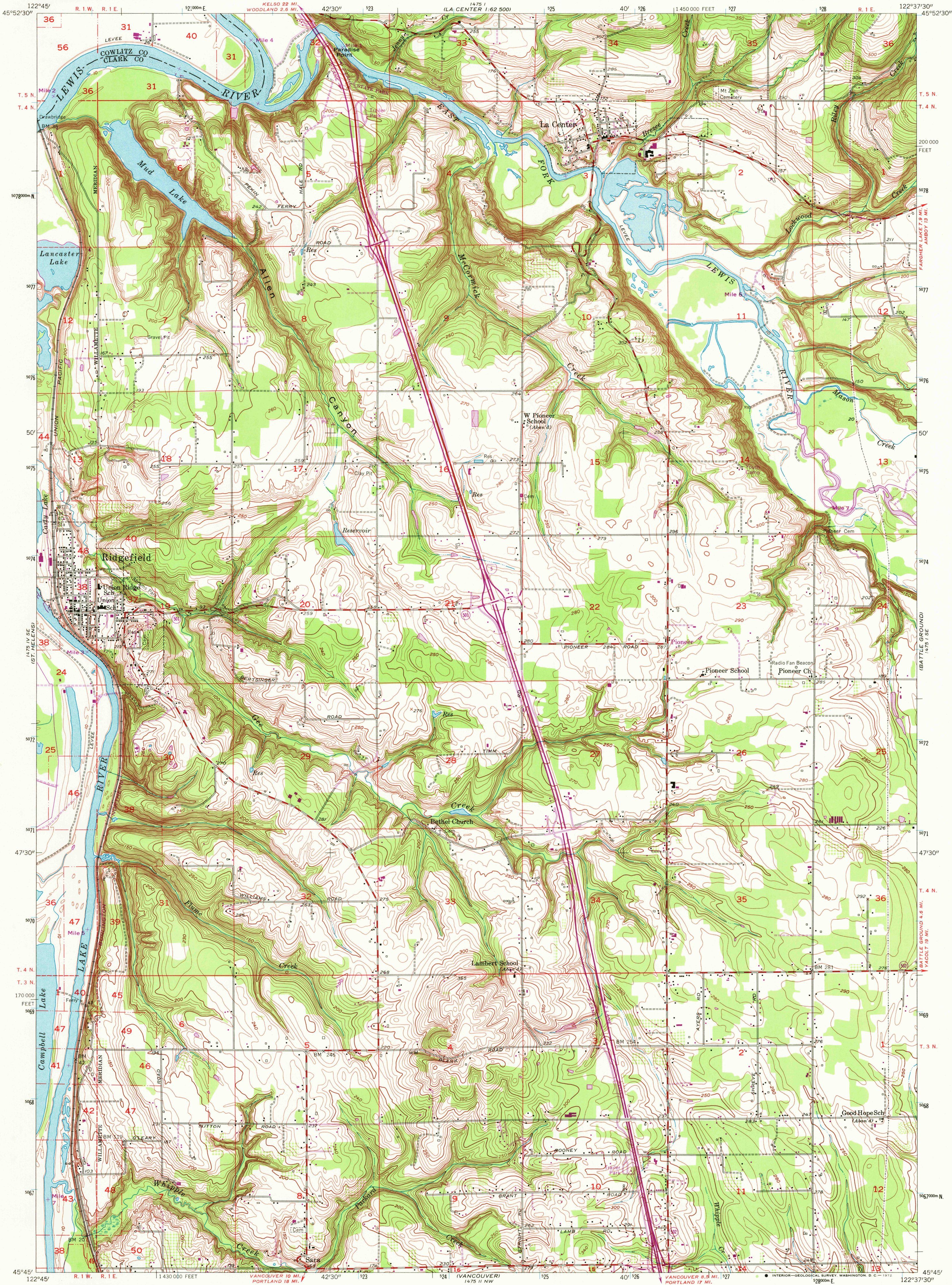


UNITED STATES
DEPARTMENT OF THE INTERIOR
GEOLOGICAL SURVEY

RIDGEFIELD QUADRANGLE
WASHINGTON
7.5 MINUTE SERIES (TOPOGRAPHIC)
SW/4 LA CENTER 15' QUADRANGLE



Mapped, edited, and published by the Geological Survey

Control by USGS, USC&GS, and USCE

Topography from aerial photographs by Kelsh plotter

Aerial photographs taken 1951. Field check 1954

Hydrography compiled from USC&GS chart 6153 (1952)

Polyconic projection. 1927 North American datum

10,000-foot grid based on Washington coordinate system,

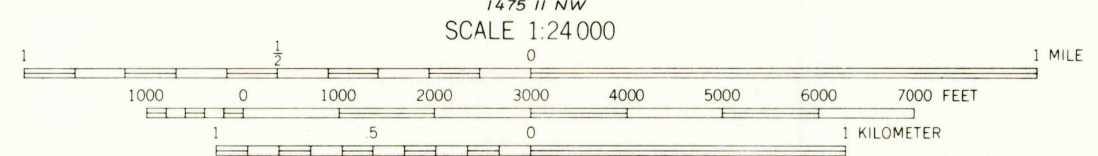
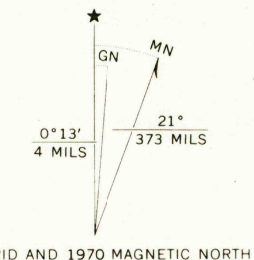
south zone

1000-meter Universal Transverse Mercator grid ticks,

zone 10, shown in blue

Revisions shown in purple compiled from aerial photographs

taken 1970. This information not field checked



CONTOUR INTERVAL 10 FEET

DATUM IS MEAN SEA LEVEL

THIS MAP COMPLIES WITH NATIONAL MAP ACCURACY STANDARDS
FOR SALE BY U.S. GEOLOGICAL SURVEY, DENVER, COLORADO 80225, OR WASHINGTON, D.C. 20242
A FOLDER DESCRIBING TOPOGRAPHIC MAPS AND SYMBOLS IS AVAILABLE ON REQUEST



ROAD CLASSIFICATION	
Heavy-duty	Light-duty
Medium-duty	Unimproved dirt
Interstate Route	State Route

RIDGEFIELD, WASH.
SW/4 LA CENTER 15' QUADRANGLE
N 4545-W 12237.5/7.5

1954
PHOTOREVISED 1970
AMS 1475 1 SW-SERIES V891

USGS
HISTORICAL FILE
TOPOGRAPHIC DIVISION

JAN 21 1972

2695