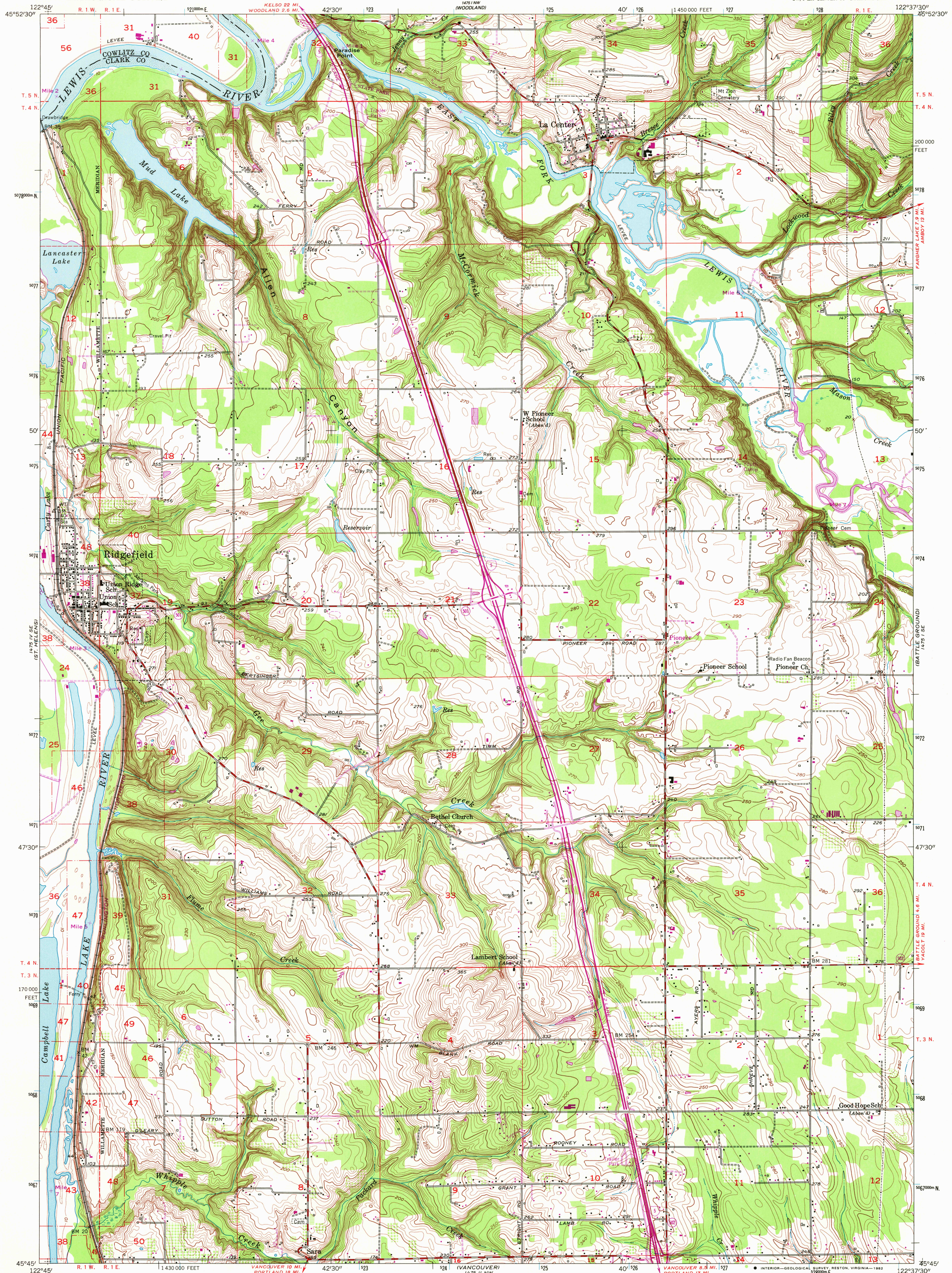


UNITED STATES
DEPARTMENT OF THE INTERIOR
GEOLOGICAL SURVEY

RIDGEFIELD QUADRANGLE
WASHINGTON
7.5 MINUTE SERIES (TOPOGRAPHIC)
SW/4 LA CENTER 15' QUADRANGLE



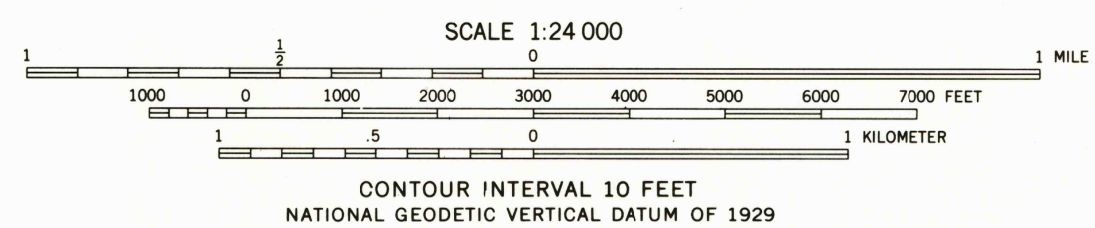
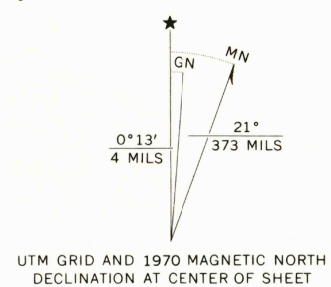
Mapped, edited, and published by the Geological Survey
Control by USGS, USC&GS, and USCE

Topography from aerial photographs by Kersh plotter
Aerial photographs taken 1951. Field check 1954
Hydrography compiled from USC&GS chart 6153 (1952)

Polyconic projection. 1927 North American datum
10,000-foot grid based on Washington coordinate system,
south zone
1000-meter Universal Transverse Mercator grid ticks,
zone 10, shown in blue

To place on the predicted North American Datum 1983,
move the projection lines 23 meters north and
94 meters east as shown by dashed corner ticks

Revisions shown in purple compiled from aerial photographs
taken 1970. This information not field checked



ROAD CLASSIFICATION
Heavy-duty ——— Light-duty ———
Medium-duty ——— Unimproved dirt ———
Interstate Route ——— State Route ———

RIDGEFIELD, WASH.
SW/4 LA CENTER 15' QUADRANGLE
N 4545—W 12237.5/7.5
PHOTOINSPECTED 1975
1954
PHOTOREVISED 1970
DMA 1475 1 SW—SERIES V891

THIS MAP COMPLIES WITH NATIONAL MAP ACCURACY STANDARDS
FOR SALE BY U. S. GEOLOGICAL SURVEY, DENVER, COLORADO 80225, OR RESTON, VIRGINIA 22092
A FOLDER DESCRIBING TOPOGRAPHIC MAPS AND SYMBOLS IS AVAILABLE ON REQUEST

Map photoinspected 1975
No major culture or drainage changes observed

RETURN TO:
USGS AND HISTORICAL MAP ARCHIVES

2000
JUN 2 - 1990