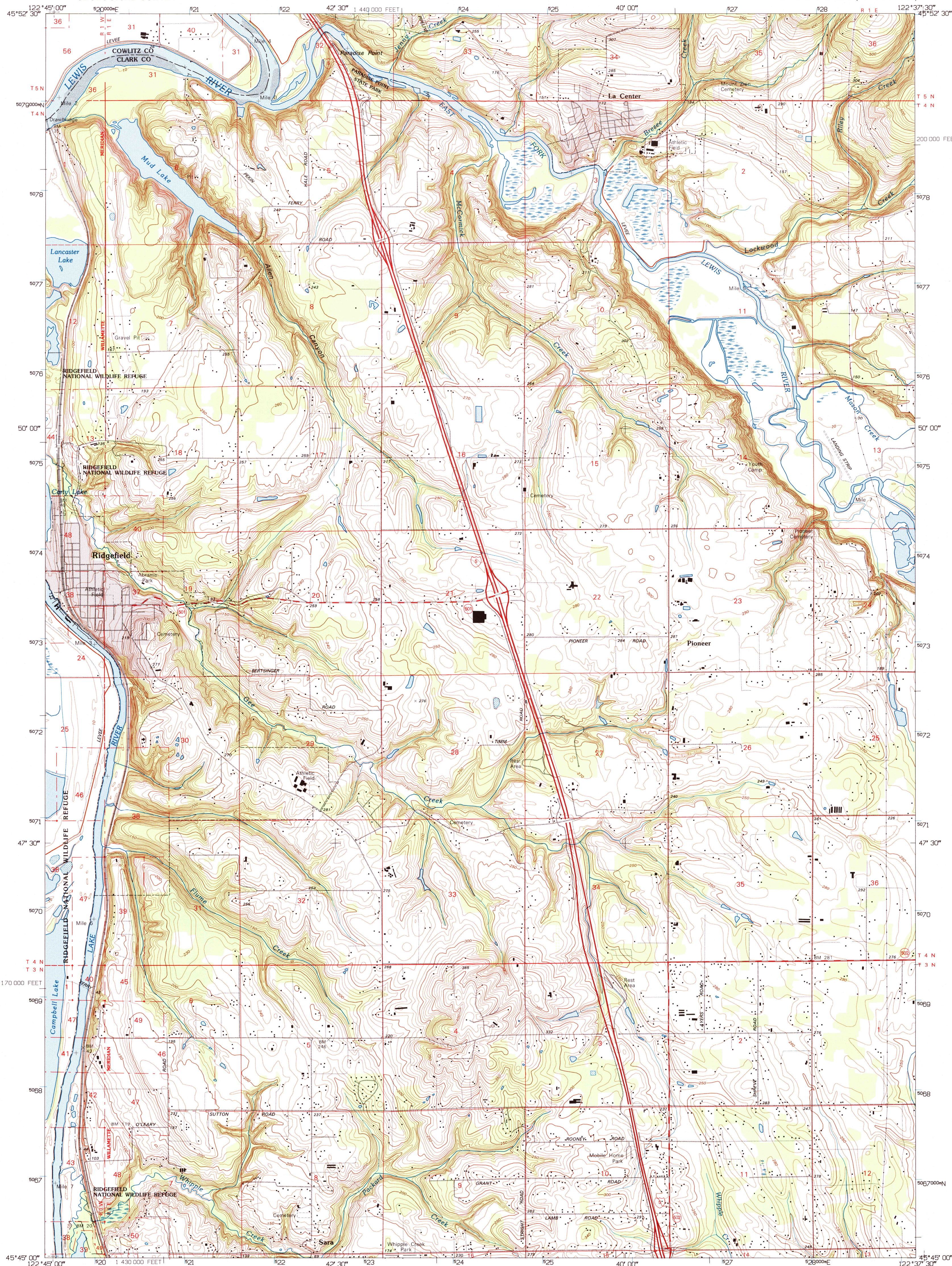
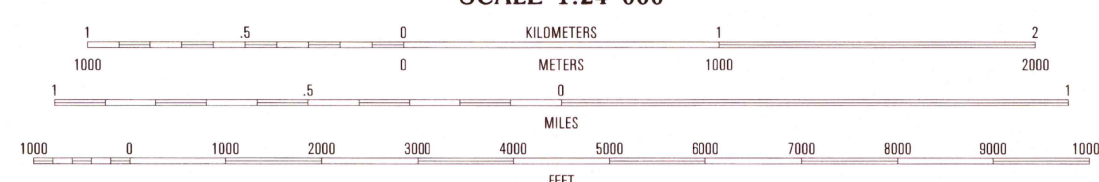
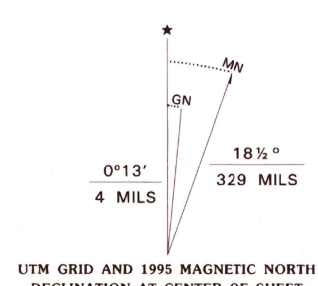


UNITED STATES
DEPARTMENT OF THE INTERIOR
GEOLOGICAL SURVEY

RIDGEFIELD QUADRANGLE
WASHINGTON
7.5-MINUTE SERIES (TOPOGRAPHIC)



Produced by the United States Geological Survey
Control by USGS, NOS/NOAA, and USCE
Compiled from imagery dated 1951. Revised from
imagery dated 1990. PLSS and survey control
current as of 1954. Map edited 1995. Contours and land
elevations have not been revised and may conflict with
other content.
North American Datum of 1927 (NAD 27). Projection and
blue 1000-meter ticks: Universal Transverse Mercator, zone 10
10 000-foot ticks: Washington Coordinate System, south zone
North American Datum of 1983 (NAD 83) is shown by dashed
corner ticks. The values of the shift between NAD 27
and NAD 83 for 7.5-minute intersections are obtainable from
National Geodetic Survey NADCON software.
There may be private inholdings within the boundaries of
the National or State reservations shown on this map.



ROAD CLASSIFICATION
Primary highway
hard surface
Secondary highway
hard surface
Light-duty road, hard or
improved surface
Unimproved road
Interstate Route
U.S. Route
State Route

QUADRANGLE LOCATION

1	2	3
4	5	6
7	8	9

- 1 Deer Island
- 2 Woodland
- 3 Ariel
- 4 Saint Helens
- 5 Battle Ground
- 6 Sauvie Island
- 7 Vancouver
- 8 Orchards

RIDGEFIELD, WA
45122-66-TF-024

1990

DMA 1475 1 SW-SERIES V891

THIS MAP COMPLIES WITH NATIONAL MAP ACCURACY STANDARDS
FOR SALE BY U.S. GEOLOGICAL SURVEY
DENVER, COLORADO 80225, OR RESTON, VIRGINIA 22092
A FOLDER DESCRIBING TOPOGRAPHIC MAPS AND SYMBOLS IS AVAILABLE ON REQUEST

