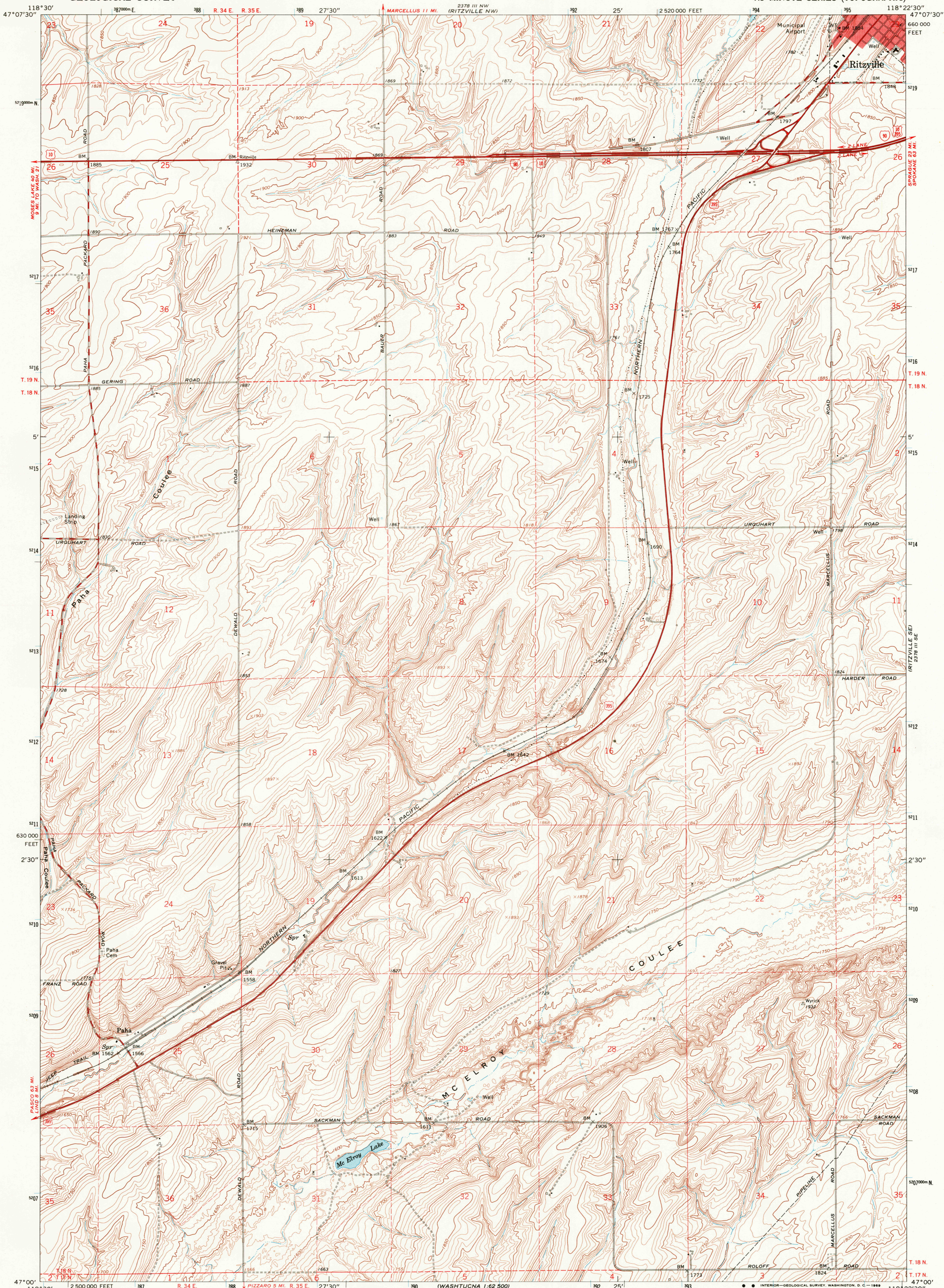


UNITED STATES
DEPARTMENT OF THE INTERIOR
GEOLOGICAL SURVEY

RITZVILLE SW QUADRANGLE
WASHINGTON—ADAMS CO.
7.5 MINUTE SERIES (TOPOGRAPHIC)



Mapped, edited, and published by the Geological Survey

Control by USGS and USC&GS

Topography by photogrammetric methods from aerial photographs taken 1966. Field checked 1967

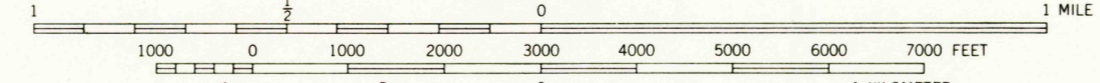
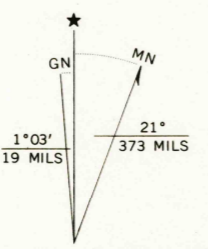
Polyconic projection. 1927 North American datum

10,000-foot grid based on Washington coordinate system, south zone

1000-meter Universal Transverse Mercator grid ticks, zone 11, shown in blue

Red tint indicates areas in which only landmark buildings are shown

Fine red dashed lines indicate selected fence lines



CONTOUR INTERVAL 10 FEET
DATUM IS MEAN SEA LEVEL



ROAD CLASSIFICATION	
Heavy-duty	Light-duty
Medium-duty	Unimproved dirt
Interstate Route	U. S. Route

USGS
Historical File
Topographic Division
1967
RITZVILLE SW, WASH.
N 4700—W 11822.5/7.5
AMS 2378 III SW—SERIES V891

THIS MAP COMPLIES WITH NATIONAL MAP ACCURACY STANDARDS
FOR SALE BY U. S. GEOLOGICAL SURVEY, DENVER, COLORADO 80225, OR WASHINGTON, D. C. 20242
A FOLDER DESCRIBING TOPOGRAPHIC MAPS AND SYMBOLS IS AVAILABLE ON REQUEST

2590
MAR 17 1970