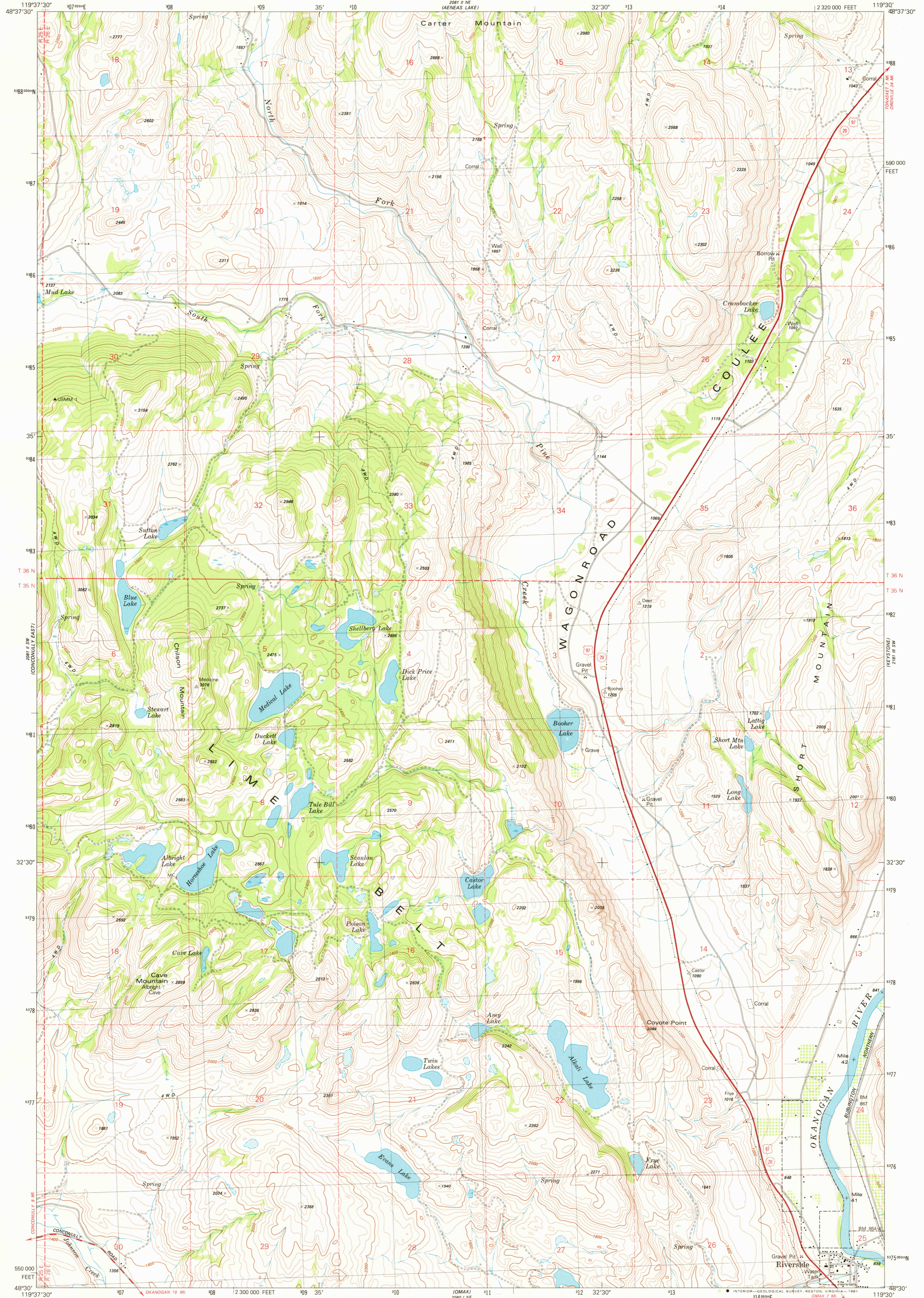
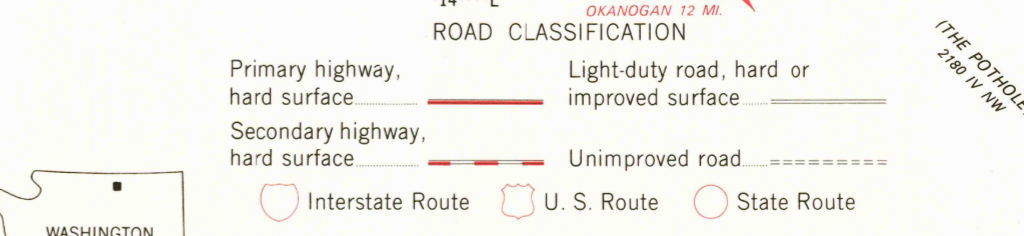
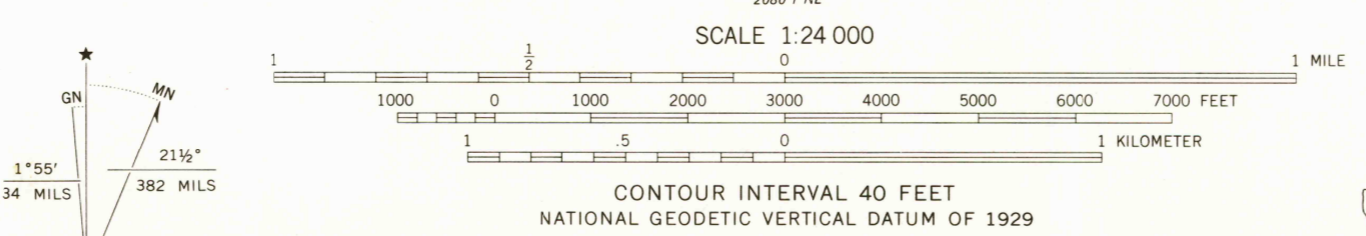


UNITED STATES  
DEPARTMENT OF THE INTERIOR  
GEOLOGICAL SURVEY

RIVERSIDE QUADRANGLE  
WASHINGTON-OKANOGAN CO.  
7.5 MINUTE SERIES (TOPOGRAPHIC)



Mapped, edited, and published by the Geological Survey  
Control by USGS and NOS/NOAA  
Topography by photogrammetric methods from aerial  
photographs taken 1973. Field checked 1975  
Map edited 1981  
Projection and 10,000-foot grid ticks: Washington coordinate  
system, north zone (Lambert conformal conic)  
1000-meter Universal Transverse Mercator grid, zone 11  
1927 North American Datum  
To place on the predicted North American Datum 1983  
move the projection lines 19 meters north and  
86 meters east as shown by dashed corner ticks  
Where omitted, land lines have not been established  
Fine red dashed lines indicate selected fence and field lines where  
generally visible on aerial photographs  
This information is unchecked



WASHINGTON  
QUADRANGLE LOCATION  
RIVERSIDE, WASH.  
SE/4 CONCONULLY 15' QUADRANGLE  
N4830-W11930/7.5  
1981  
DMA 2081 II SE-SERIES V891

USGS  
Historical File  
National Mapping Div.

2000  
MAR 12 1981