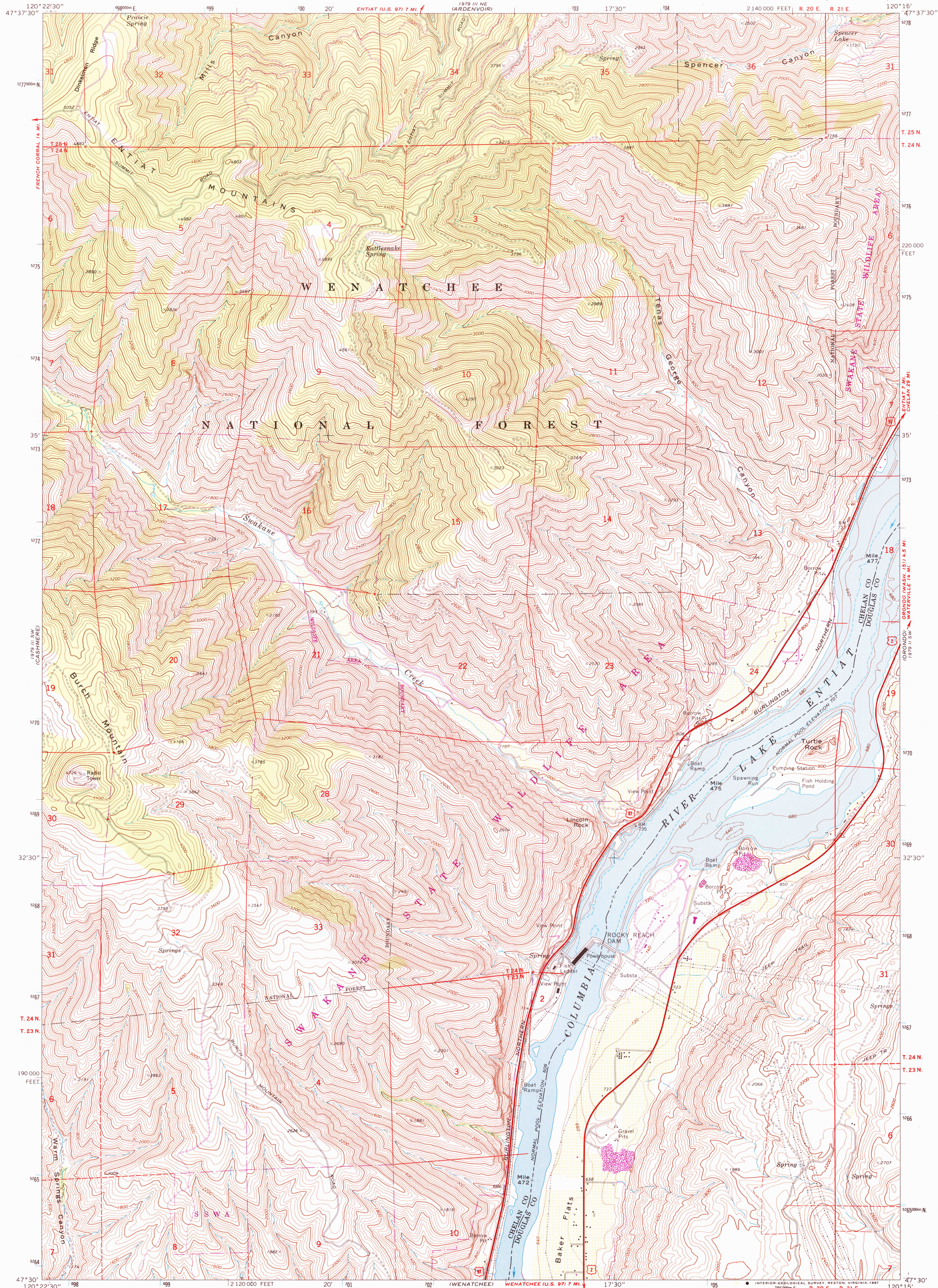


UNITED STATES  
DEPARTMENT OF THE INTERIOR  
GEOLOGICAL SURVEY

ROCKY REACH DAM QUADRANGLE  
WASHINGTON  
7.5 MINUTE SERIES (TOPOGRAPHIC)



Mapped, edited, and published by the Geological Survey

Control by USGS and NOS/NOAA

Topography by photogrammetric methods from aerial photographs taken 1967. Field checked 1968

Polyconic projection. 1927 North American Datum

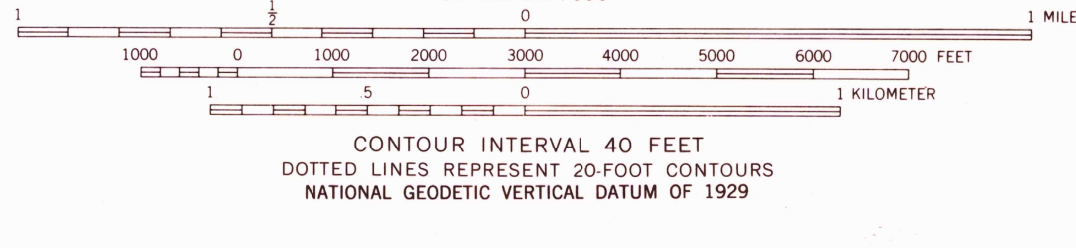
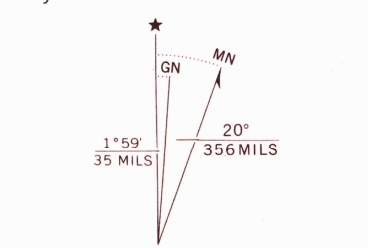
10,000-foot grid based on Washington coordinate system, north zone

1000-meter Universal Transverse Mercator grid ticks, zone 10, shown in blue

Fine red dashed lines indicate selected fence lines

Certain land lines are omitted because of insufficient data

To place on the predicted North American Datum 1983 move the projection lines 20 meters north and 88 meters east as shown by dashed corner ticks



THIS MAP COMPLIES WITH NATIONAL MAP ACCURACY STANDARDS  
FOR SALE BY U.S. GEOLOGICAL SURVEY  
DENVER, COLORADO 80225, OR RESTON, VIRGINIA 22092  
A FOLDER DESCRIBING TOPOGRAPHIC MAPS AND SYMBOLS IS AVAILABLE ON REQUEST

ROAD CLASSIFICATION  
Primary highway, hard surface  
Secondary highway, hard surface  
Unimproved road  
Interstate Route  
U.S. Route  
State Route



ROCKY REACH DAM, WASH.  
47120-E3-TF-024

1968  
PHOTOREVISED 1987  
DMA 1979 III SE-SERIES V891

