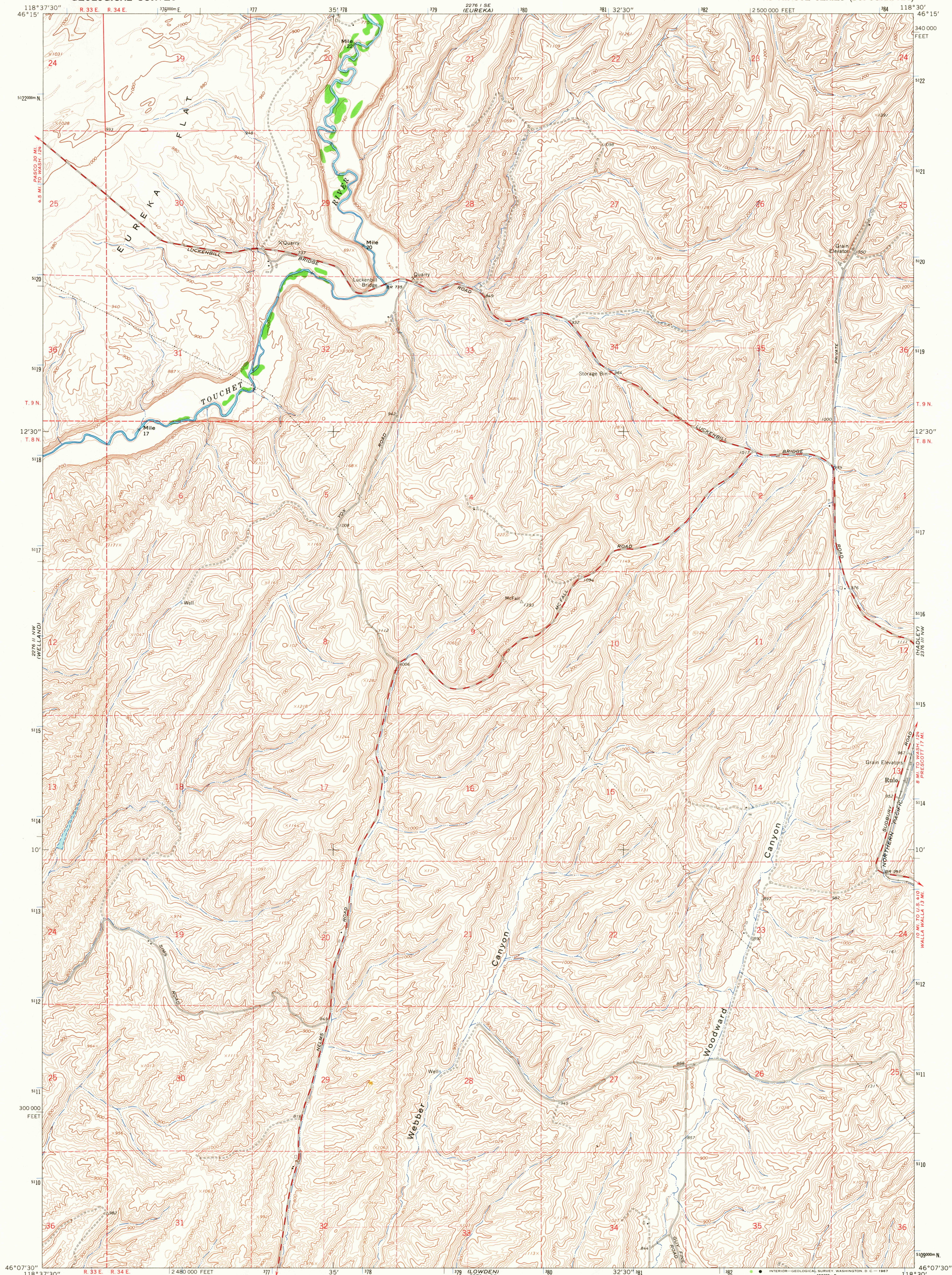


UNITED STATES
DEPARTMENT OF THE INTERIOR
GEOLOGICAL SURVEY

RULO QUADRANGLE
WASHINGTON—WALLA WALLA CO.
7.5 MINUTE SERIES (TOPOGRAPHIC)



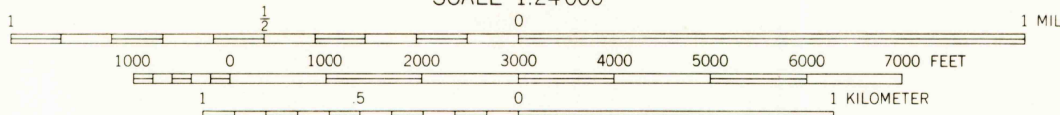
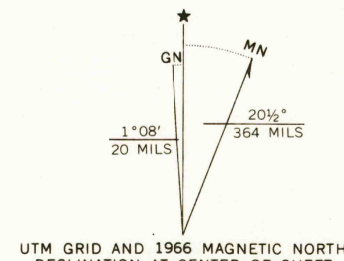
Mapped, edited, and published by the Geological Survey

Control by USGS and USC&GS

Topography by photogrammetric methods from aerial photographs taken 1964. Field checked 1966

Polyconic projection. 1927 North American datum
10,000-foot grid based on Washington coordinate system,
south zone
1000-meter Universal Transverse Mercator grid ticks,
zone 11, shown in blue

Fine red dashed lines indicate selected fence lines



CONTOUR INTERVAL 20 FEET
DOTTED LINES REPRESENT 10-FOOT CONTOURS
DATUM IS MEAN SEA LEVEL

THIS MAP COMPLIES WITH NATIONAL MAP ACCURACY STANDARDS
FOR SALE BY U.S. GEOLOGICAL SURVEY, DENVER, COLORADO 80225, OR WASHINGTON, D. C. 20242
A FOLDER DESCRIBING TOPOGRAPHIC MAPS AND SYMBOLS IS AVAILABLE ON REQUEST



FILE COPY
TOPOGRAPHIC DIVISION

ROAD CLASSIFICATION
Medium-duty ——— Light-duty ———
Unimproved dirt - - - - -

USGS
Historical File
Topographic Division

RULO, WASH.
N4607.5—W11830/7.5

1966

AMS 2276 II NE—SERIES V891

COLLEGE PLACE

2560
APR 5 1968