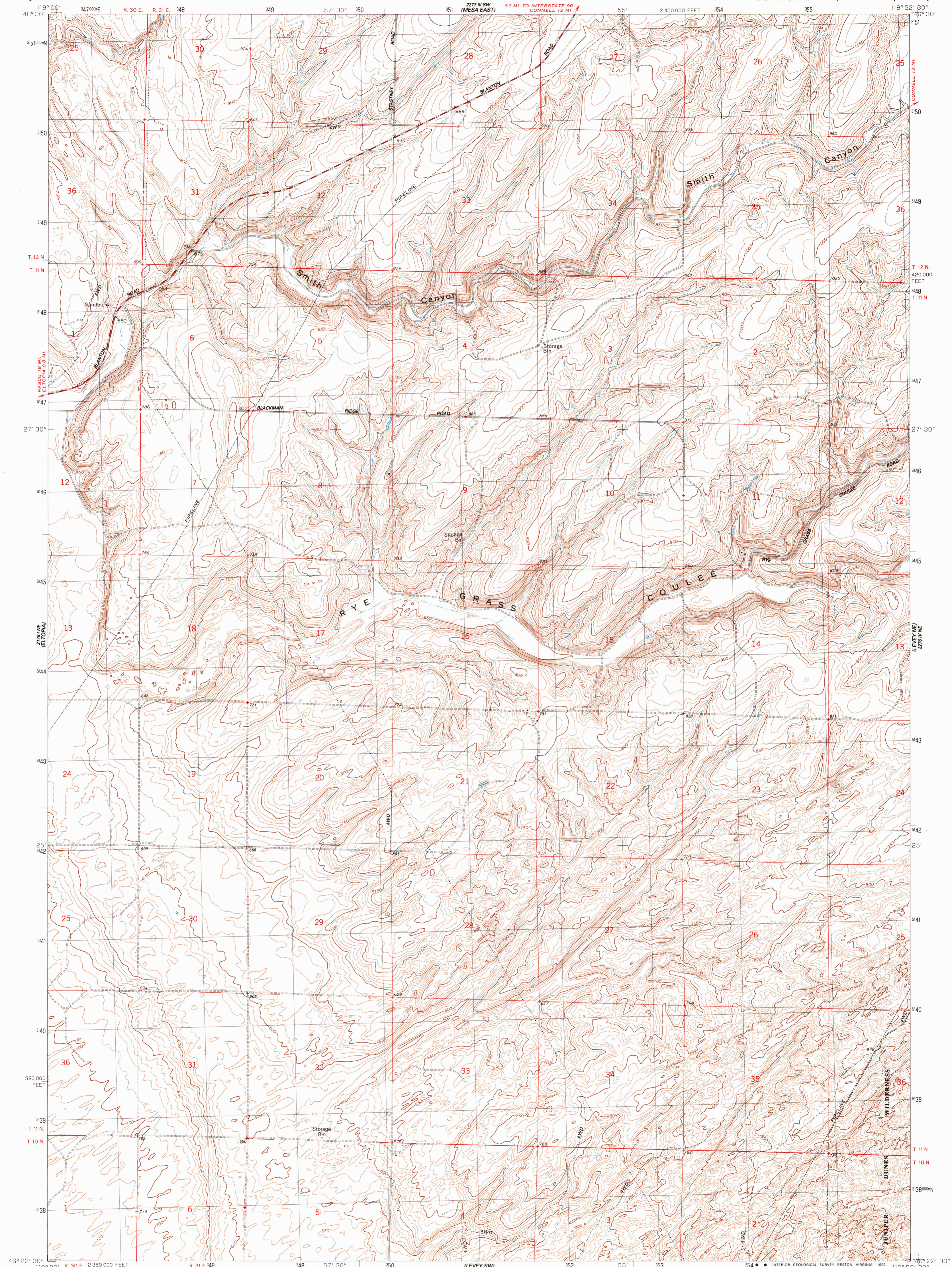


2277 III SW  
(MESA WEST)

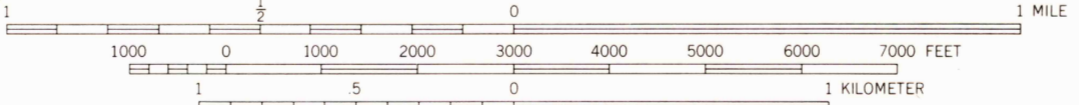
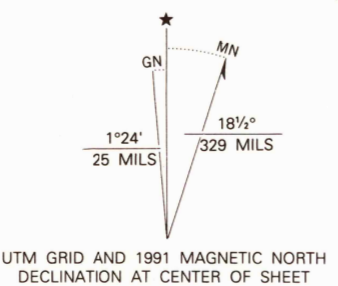
UNITED STATES  
DEPARTMENT OF THE INTERIOR  
GEOLOGICAL SURVEY

RYE GRASS COULEE QUADRANGLE  
WASHINGTON-FRANKLIN CO  
7.5 MINUTE SERIES (TOPOGRAPHIC)

2277 III SE  
(CONNELL 56)



Produced by the United States Geological Survey  
Control by USGS and NOS/NOAA  
Compiled from aerial photographs taken 1959. Revised from aerial photographs taken 1968. Field checked 1990. Map edited 1991  
North American Datum of 1927 (NAD 27). Projection and 10 000-foot grid ticks: Washington Coordinate System, south zone (Lambert Conformal Conic). 1000-meter Universal Transverse Mercator grid, zone 11  
The difference between NAD 27 and North American Datum of 1983 (NAD 83) for 7.5 minute intersections is given in USGS Bulletin 1875. The NAD 83 is shown by dashed corner ticks  
Fine red dashed lines indicate selected fence lines



CONTOUR INTERVAL 10 FEET  
NATIONAL GEODETIC VERTICAL DATUM OF 1929



ROAD CLASSIFICATION  
Medium-duty ——— Light-duty ———  
Unimproved dirt - - - - -

THIS MAP COMPLIES WITH NATIONAL MAP ACCURACY STANDARDS  
FOR SALE BY U.S. GEOLOGICAL SURVEY  
DENVER, COLORADO 80225, OR RESTON, VIRGINIA 22092  
A FOLDER DESCRIBING TOPOGRAPHIC MAPS AND SYMBOLS IS AVAILABLE ON REQUEST

RYE GRASS COULEE, WASH.  
46118-08-TF-024  
MAR 1992  
1991

DMA 2276 IV NW-SERIES V891