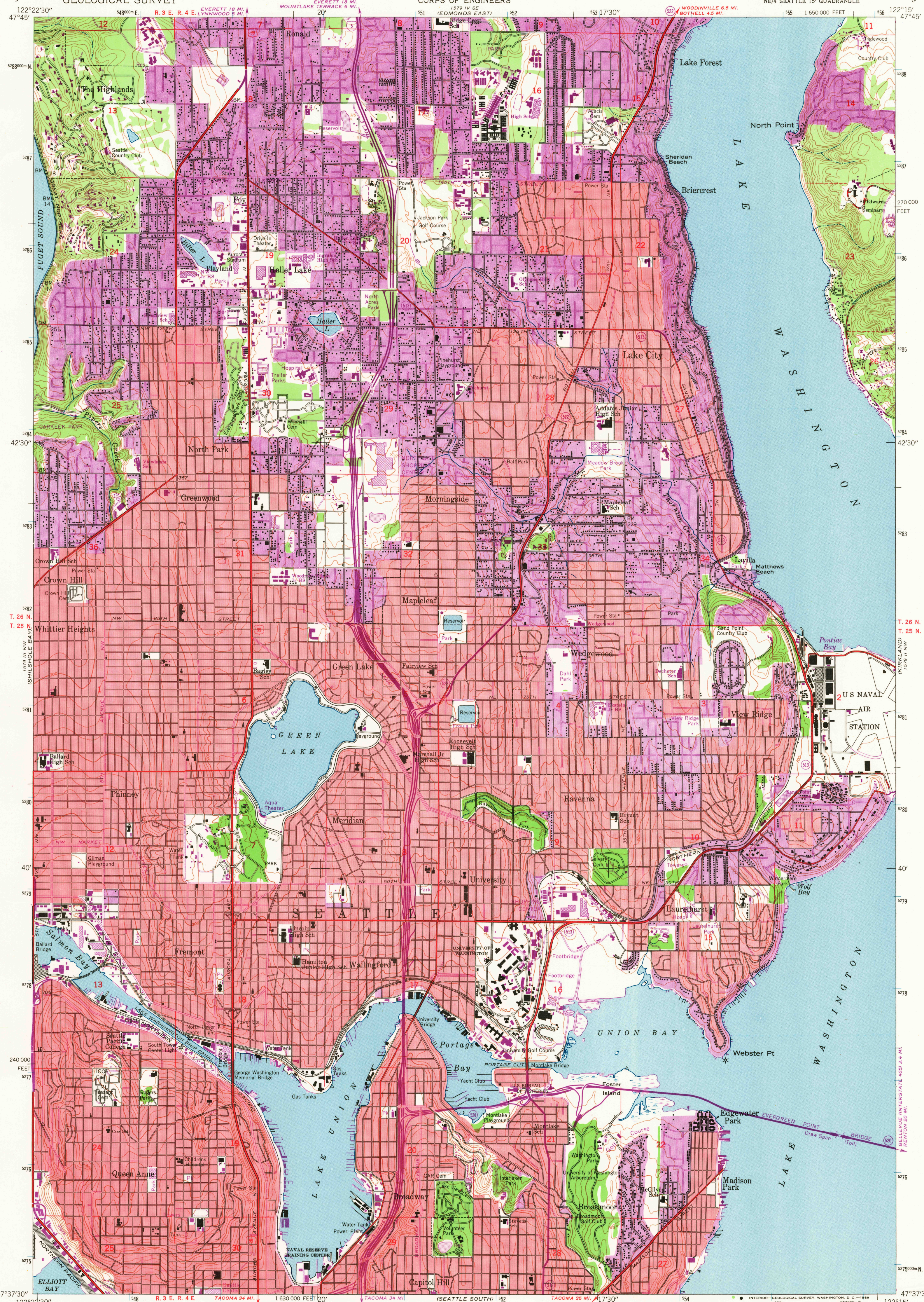


UNITED STATES  
DEPARTMENT OF THE INTERIOR  
GEOLOGICAL SURVEY

UNITED STATES  
DEPARTMENT OF THE ARMY  
CORPS OF ENGINEERS

SEATTLE NORTH QUADRANGLE  
WASHINGTON—KING CO.  
7.5 MINUTE SERIES (TOPOGRAPHIC)  
NE/4 SEATTLE 15' QUADRANGLE



Maped by the Army Map Service  
Published for civil use by the Geological Survey  
Control by USCGS and King County Engineer office  
Topography from aerial photographs by multiplex methods  
Aerial photographs taken 1943. Field check 1949  
Polyconic projection. 1927 North American datum  
10,000-foot grid based on Washington coordinate system,  
north zone  
1000-meter Universal Transverse Mercator grid ticks,  
zone 10, shown in blue  
Red tint indicates areas in which only  
landmark buildings are shown  
No distinction is made between barns, dwellings,  
commercial and industrial buildings

SCALE 1:24000  
CONTOUR INTERVAL 25 FEET  
DATUM IS MEAN SEA LEVEL  
SHORELINE SHOWN REPRESENTS THE APPROXIMATE LINE OF MEAN HIGH WATER  
THE AVERAGE RANGE OF TIDE IS APPROXIMATELY 11 FEET  
THIS MAP COMPLIES WITH NATIONAL MAP ACCURACY STANDARDS  
FOR SALE BY U.S. GEOLOGICAL SURVEY, DENVER, COLORADO 80225, OR WASHINGTON, D. C. 20242  
A FOLDER DESCRIBING TOPOGRAPHIC MAPS AND SYMBOLS IS AVAILABLE ON REQUEST

ROAD CLASSIFICATION  
Heavy-duty ——— Light-duty ———  
Medium-duty ——— Unimproved dirt ———  
U.S. Route ——— State Route ———  
Interstate Route ———  
SEATTLE NORTH, WASH.  
NE/4 SEATTLE 15' QUADRANGLE  
N4737.5—W12215/7.5  
1949  
PHOTOREVISED 1968  
AMS 1579 III NE—SERIES V891

U.S.G.S.  
FILE COPY  
TOPOGRAPHIC DIVISION  
USGS  
Historical File  
Topographic Division  
5010  
SEP 5 1969