

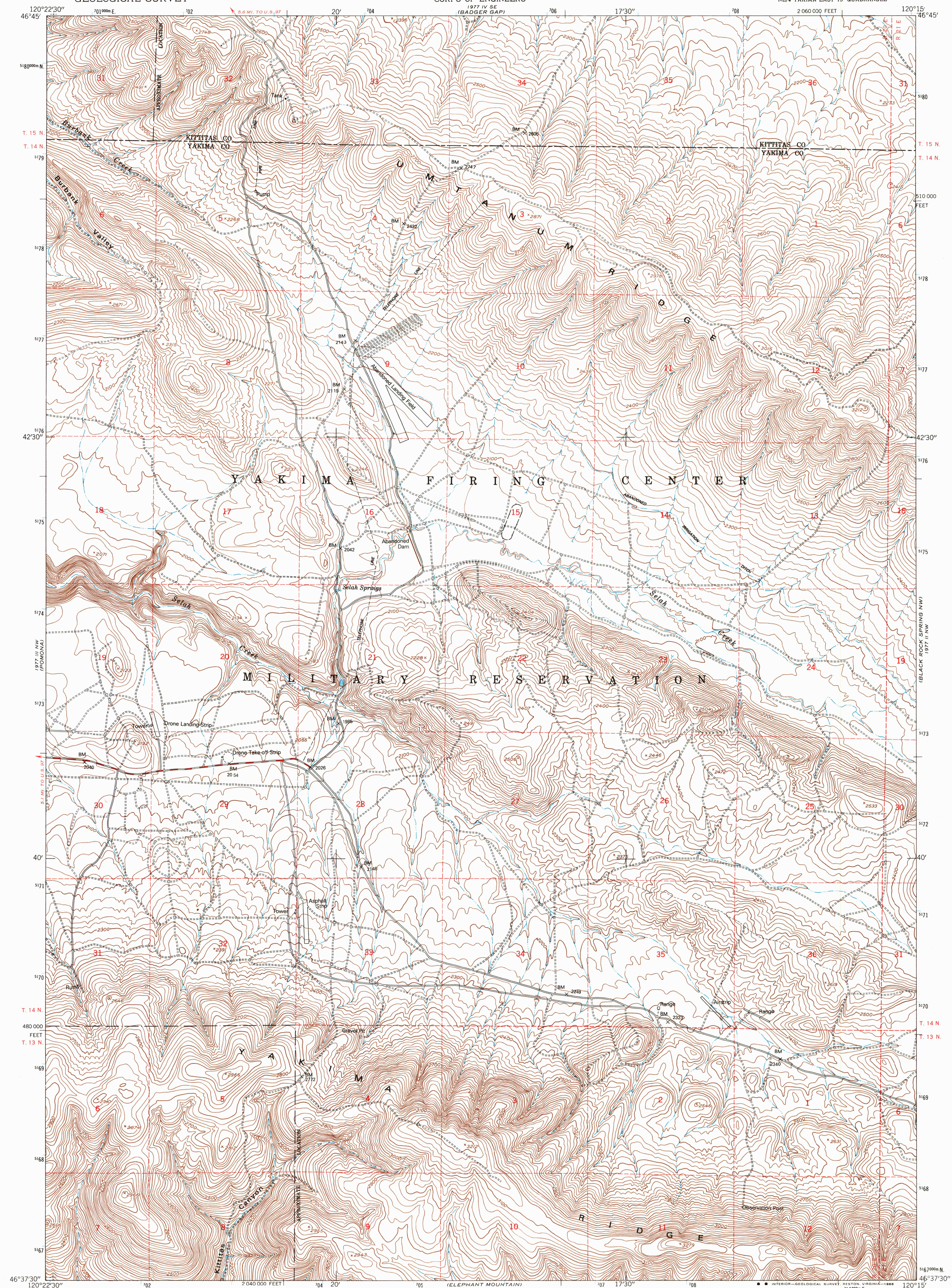
1977 IV SW  
(WYMER)

UNITED STATES  
DEPARTMENT OF THE INTERIOR  
GEOLOGICAL SURVEY

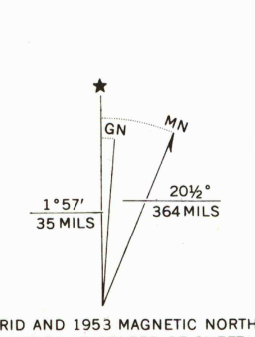
UNITED STATES  
DEPARTMENT OF THE ARMY  
CORPS OF ENGINEERS

SELAH SPRINGS QUADRANGLE  
WASHINGTON  
7.5 MINUTE SERIES (TOPOGRAPHIC)  
NE/4 YAKIMA EAST 15' QUADRANGLE

1977 I SW  
(MC DONALD SPRING)



Maped by the Army Map Service  
Published for civil use by the Geological Survey  
Control by USGS, USC&GS, and U. S. Bureau of Reclamation  
Topography from aerial photographs by photogrammetric methods  
Aerial photographs taken 1952. Field check 1953  
Polyconic projection. 1927 North American datum  
10,000-foot grid based on Washington coordinate system,  
south zone  
1000-meter Universal Transverse Mercator grid ticks,  
zone 10, shown in blue  
To place on the predicted North American Datum 1983  
move the projection lines 20 meters north and  
88 meters east as shown by dashed corner ticks  
There may be private inholdings within the boundaries of  
the National or State reservations shown on this map



SCALE 1:24 000  
1 0 1000 2000 3000 4000 5000 6000 7000 FEET  
1 0 5 10 KILOMETER  
CONTOUR INTERVAL 20 FEET  
NATIONAL GEODETIC VERTICAL DATUM OF 1929



ROAD CLASSIFICATION  
Medium-duty ——— Light-duty ———  
Unimproved dirt =====

SELAH SPRINGS, WASH.  
NE/4 YAKIMA EAST 15' QUADRANGLE  
46120-F3-TF-024

