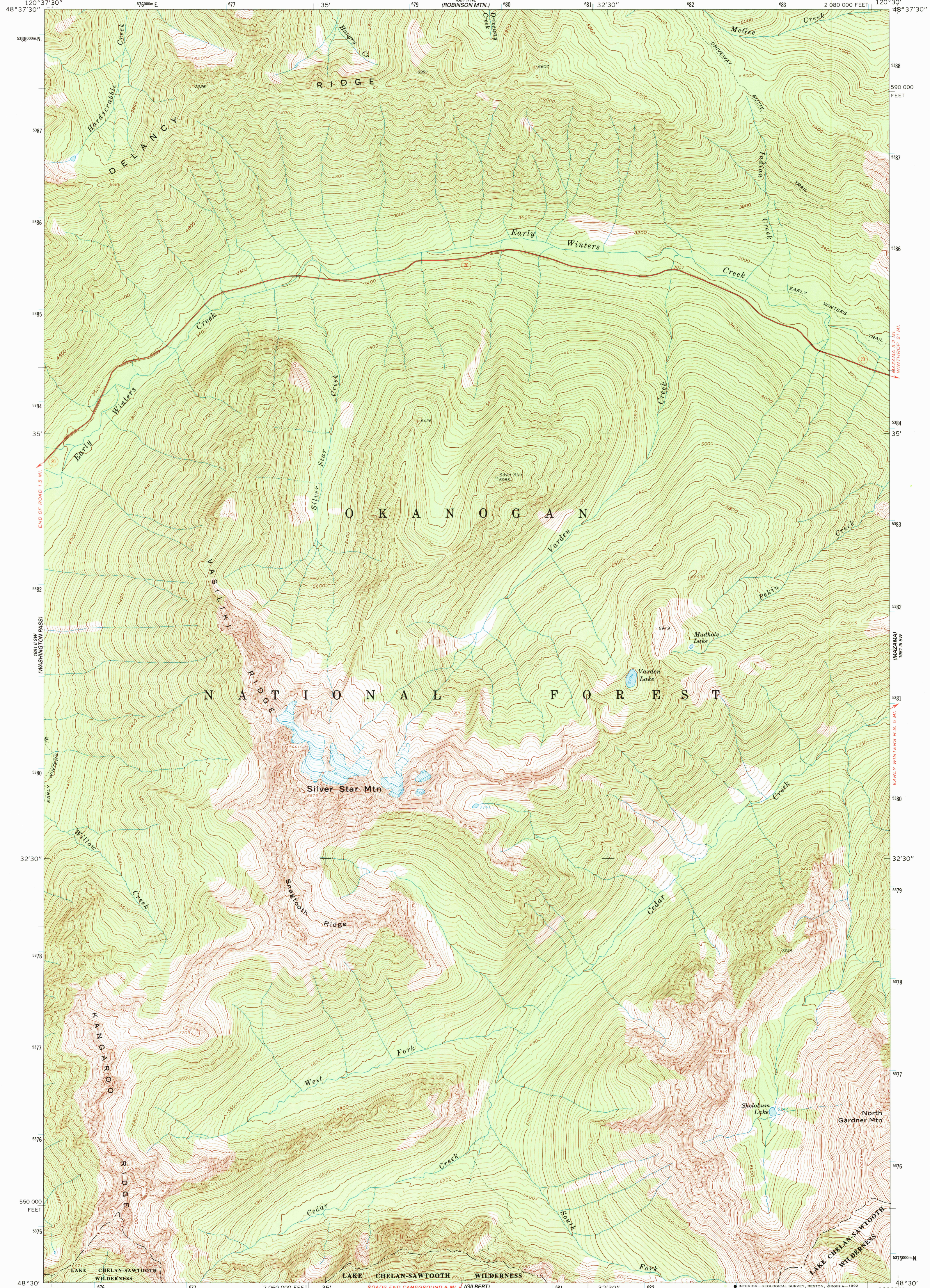


120° 37' 30" W
48° 37' 30" N
SLATE PKW

UNITED STATES
DEPARTMENT OF THE INTERIOR
GEOLOGICAL SURVEY

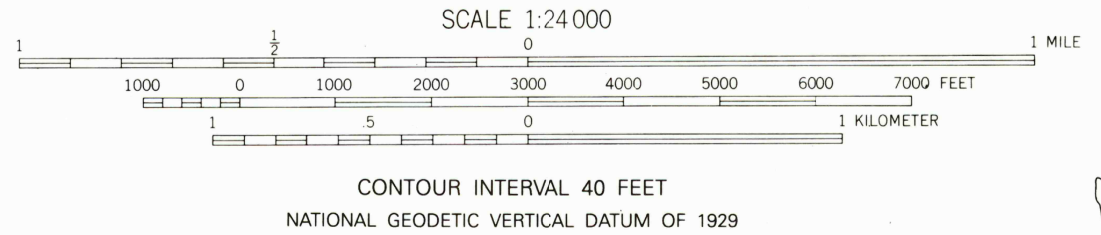
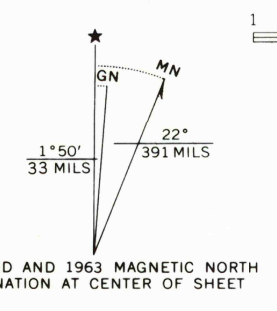
SILVER STAR MTN. QUADRANGLE
WASHINGTON-OKANOGAN CO.
7.5 MINUTE SERIES (TOPOGRAPHIC)

120° 30" W
48° 30" N
MCLEOD MTN



120° 37' 30" W
48° 30" N
MC WALTER MTN

Mapped, edited, and published by the Geological Survey
Control by USGS and NOS/NOAA
Topography by photogrammetric methods from aerial photographs taken 1958. Field checked 1963
Polyconic projection. 1927 North American Datum
10,000-foot grid based on Washington coordinate system, north zone
1000-meter Universal Transverse Mercator grid ticks, zone 10, shown in blue
The difference between 1927 North American Datum and North American Datum of 1983 (NAD 83) for 7.5 minute intersections is given in USGS Bulletin 1875. The NAD 83 is shown by dashed corner ticks
Where omitted, land lines have not been established
There may be private inholdings within the boundaries of the National or State reservations shown on this map



ROAD CLASSIFICATION

Primary highway, hard surface	Light-duty road, hard or improved surface
Secondary highway, hard surface	Unimproved road
Interstate Route	U. S. Route
	State Route

FOR SALE BY U. S. GEOLOGICAL SURVEY, DENVER, COLORADO 80225, OR RESTON, VIRGINIA 22092
A FOLDER DESCRIBING TOPOGRAPHIC MAPS AND SYMBOLS IS AVAILABLE ON REQUEST

SILVER STAR MTN., WASH.
48120-ES-TF-024
1963
DMA 1881 II SE-SERIES V891

