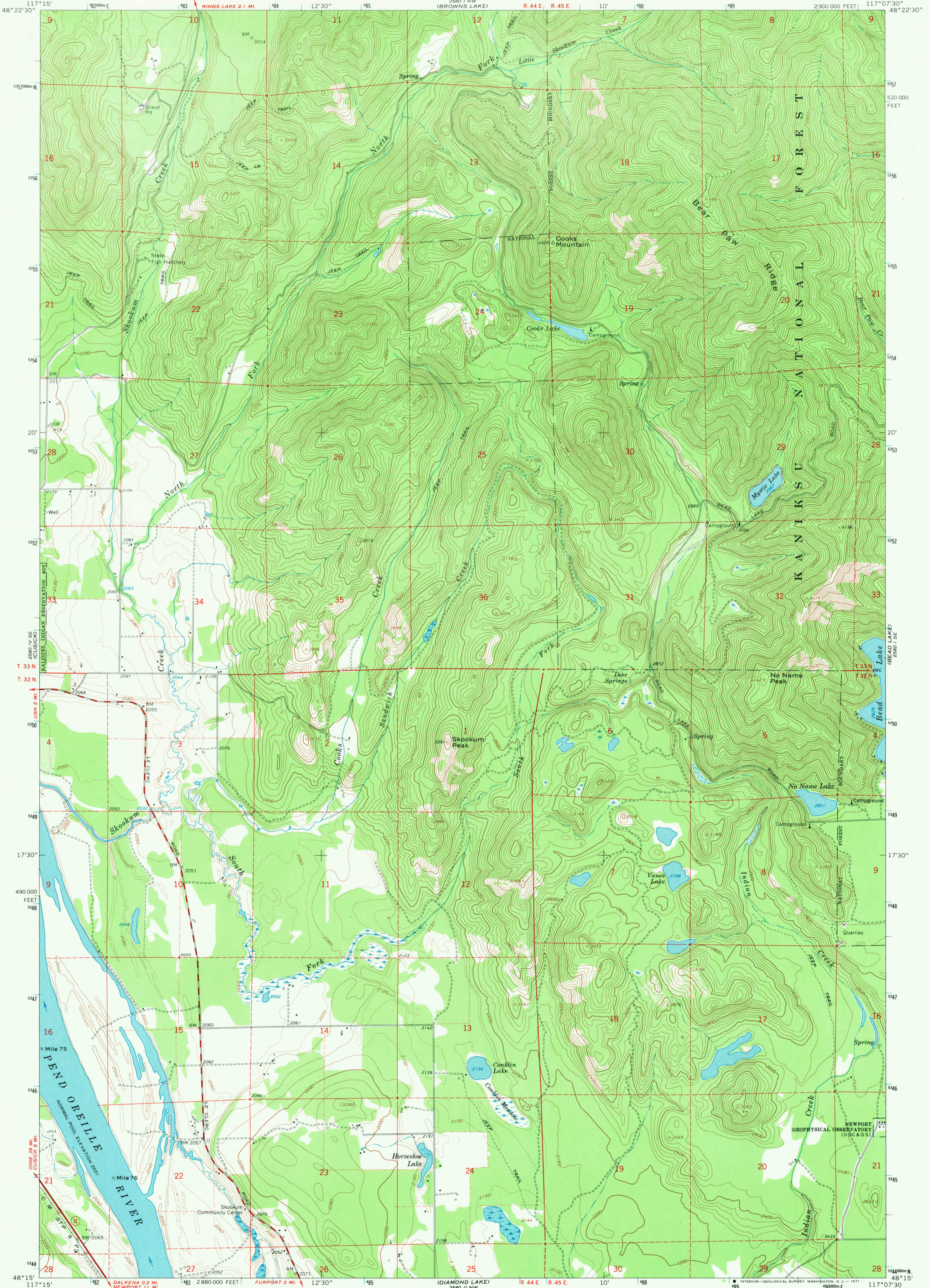


2880 1/4 NE (CAREE)

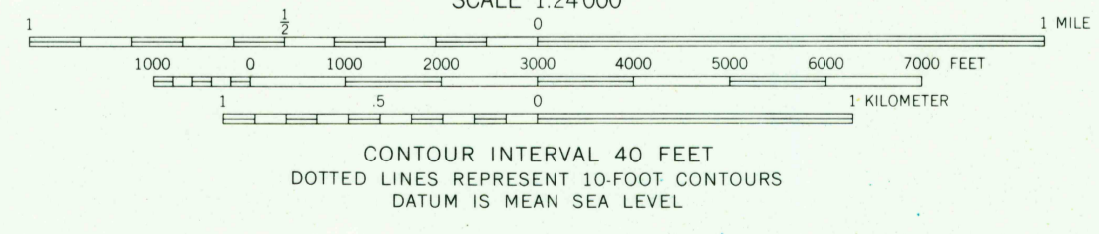
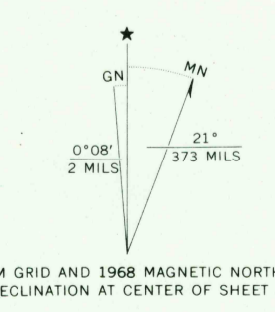
UNITED STATES  
DEPARTMENT OF THE INTERIOR  
GEOLOGICAL SURVEY

SKOOKUM CREEK QUADRANGLE  
WASHINGTON - PEND OREILLE CO.  
7.5 MINUTE SERIES (TOPOGRAPHIC)

2880 1/4 NE (GALVANA POINT)



Mapped, edited, and published by the Geological Survey  
Control by USGS and USC&GS  
Topography by photogrammetric methods from aerial  
photographs taken 1965 and planetable surveys 1968  
Polyconic projection, 1927 North American datum  
10,000-foot grid based on Washington coordinate system,  
north zone  
1000-meter Universal Transverse Mercator grid ticks,  
zone 11, shown in blue  
Fine red dashed lines indicate selected fence lines



ROAD CLASSIFICATION  
Primary highway, all weather, hard surface  
Secondary highway, all weather, hard surface  
Light-duty road, all weather, improved surface  
Unimproved road, fair or dry weather  
State Route

SKOOKUM CREEK, WASH.  
N4815-W11707.5/7.5

THIS MAP COMPLIES WITH NATIONAL MAP ACCURACY STANDARDS  
FOR SALE BY U.S. GEOLOGICAL SURVEY, DENVER, COLORADO 80225, OR WASHINGTON, D.C. 20242  
A FOLDER DESCRIBING TOPOGRAPHIC MAPS AND SYMBOLS IS AVAILABLE ON REQUEST

USGS  
HISTORICAL FILE  
TOPOGRAPHIC DIVISION

1968  
AMS 2580 1 SW - SERIES V891

2625  
SEP 3 1971  
USGS  
HISTORICAL FILE  
TOPOGRAPHIC DIVISION