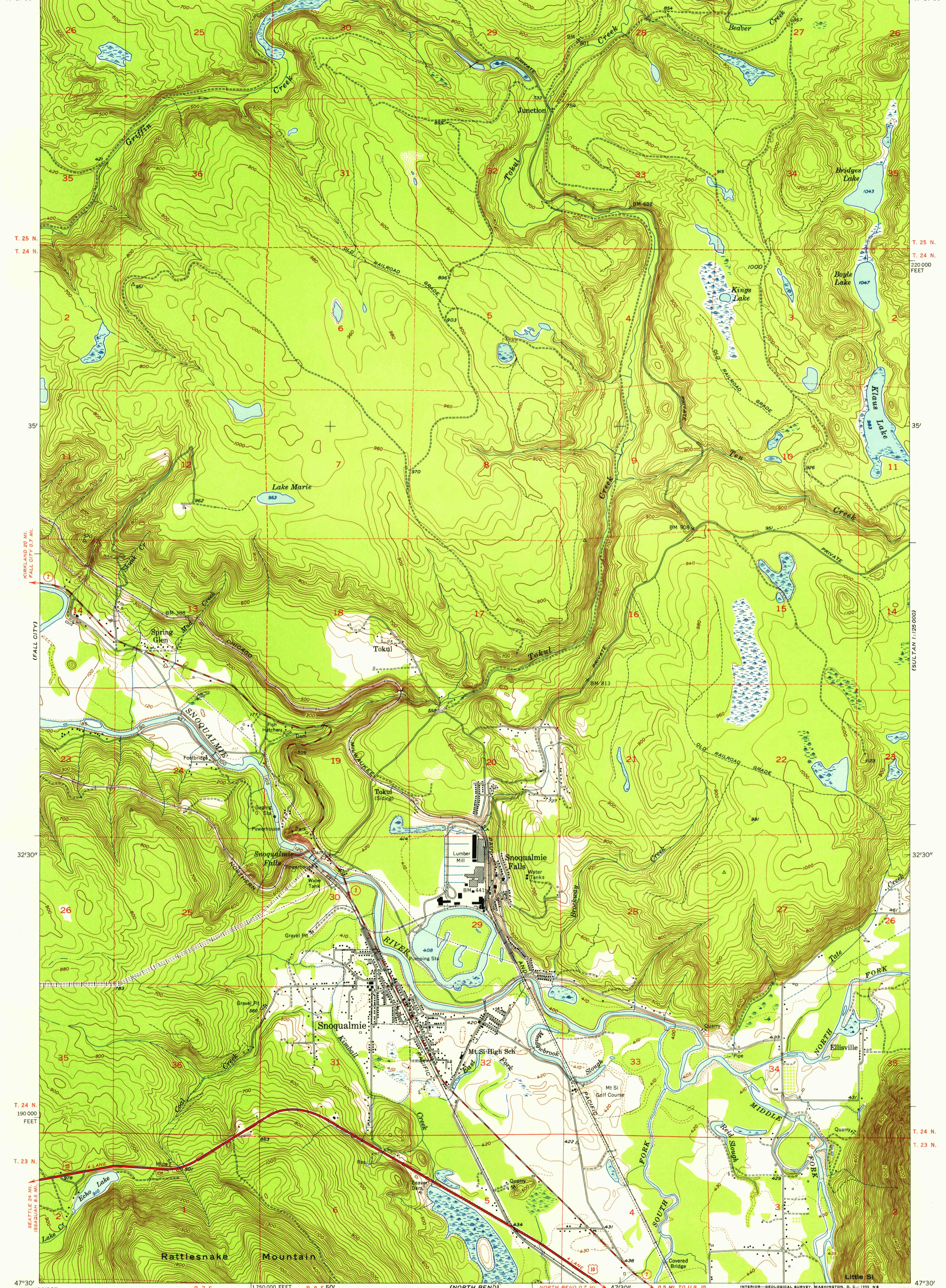
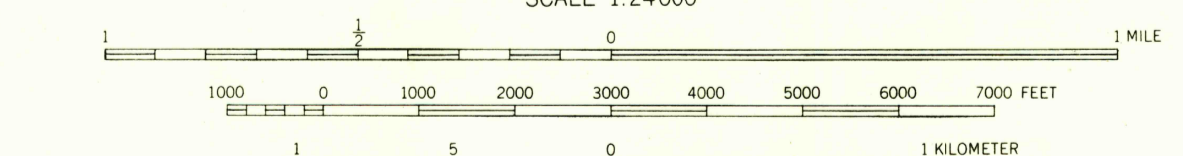
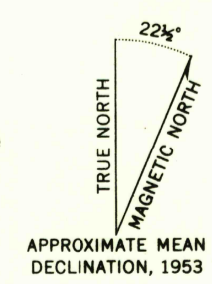


U.S.G.S.
FILE COPY
TOPOGRAPHIC DIVISION



Mapped, edited, and published by the Geological Survey
Control by USGS and USC&GS
Topography from aerial photographs by multiplex methods
and by plane-table surveys 1953. Aerial photographs taken 1952
Polyconic projection. 1927 North American datum
10,000-foot grid based on Washington coordinate system, north zone
Dashed land lines indicate approximate locations



CONTOUR INTERVAL 20 FEET
DASHED LINES REPRESENT HALF INTERVAL CONTOURS
CONTOUR INTERVAL ON RIVER SURFACE 5 FEET
DATUM IS MEAN SEA LEVEL



ROAD CLASSIFICATION

Heavy-duty	4 LANE 16 LANE	Light-duty	2 LANE 8 LANE
Medium-duty	4 LANE 16 LANE	Unimproved dirt	-----
U.S. Route	⊠	State Route	○

USGS
Historical File
Topographic Division
SNOQUALMIE, WASH.
N 4730—W 12145/7.5
1953