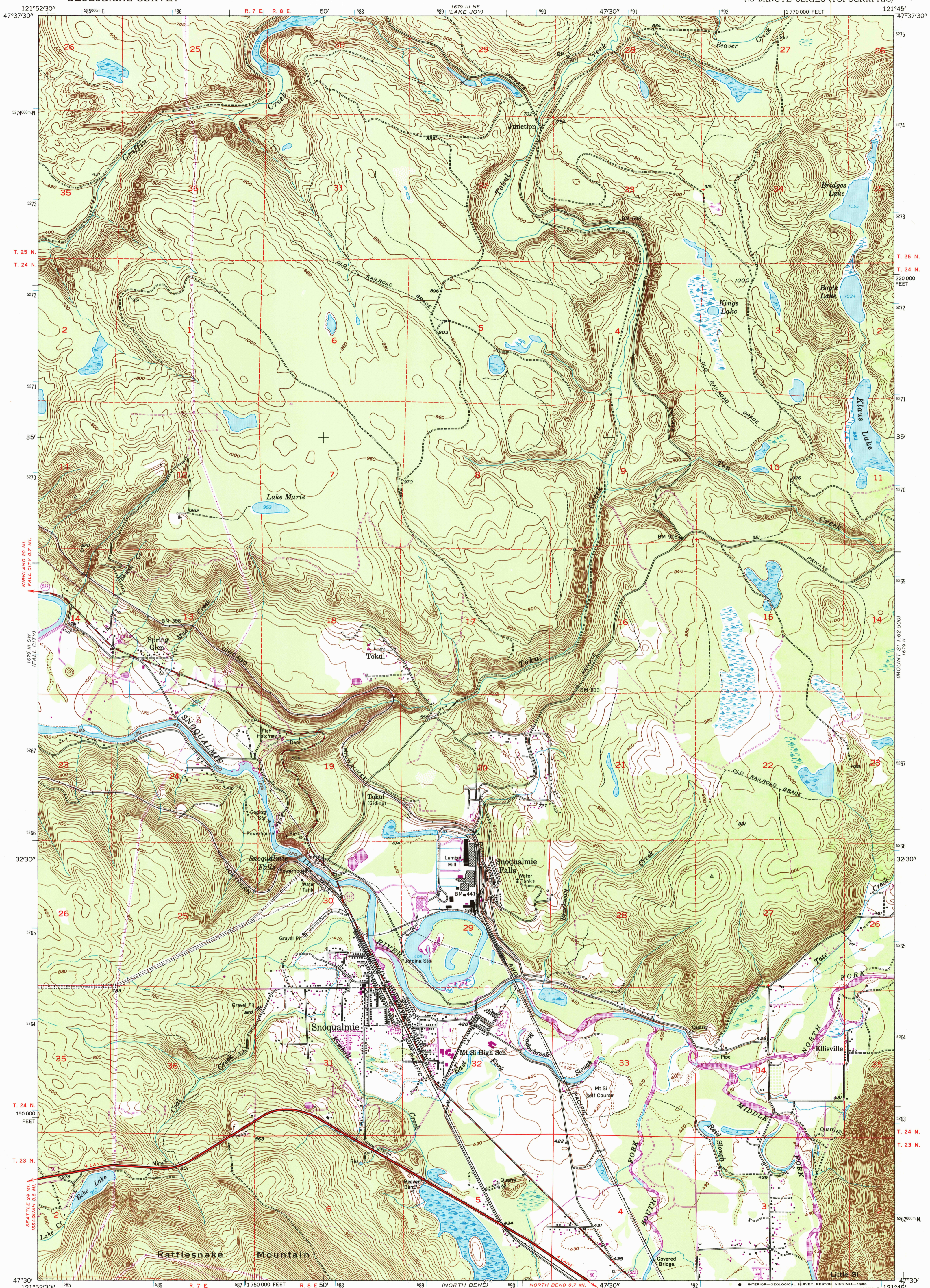


1927 1:25,000
CARTOGRAPHY

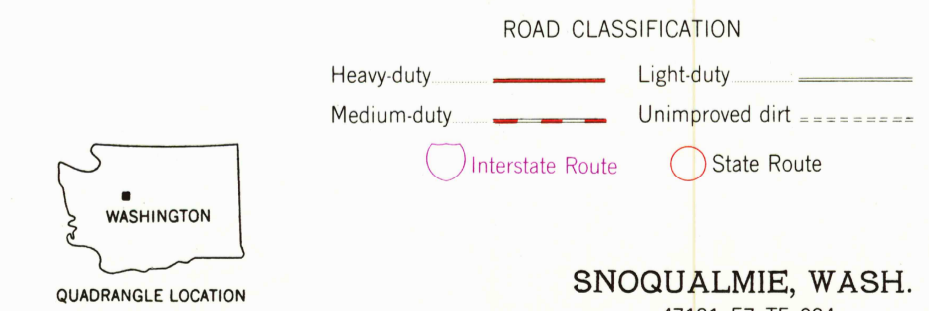
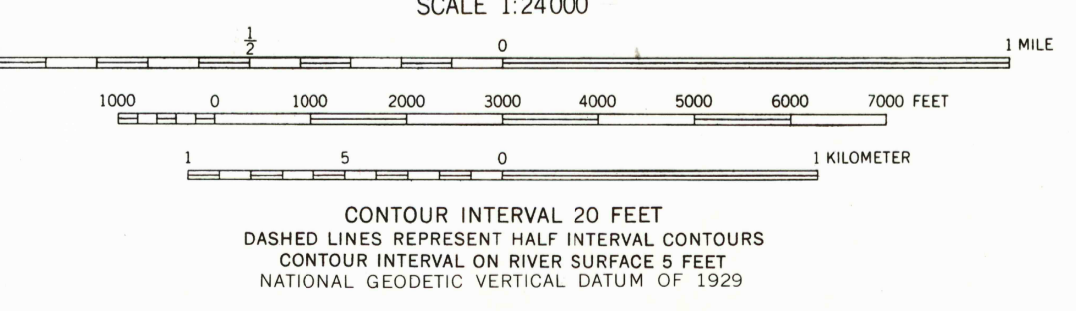
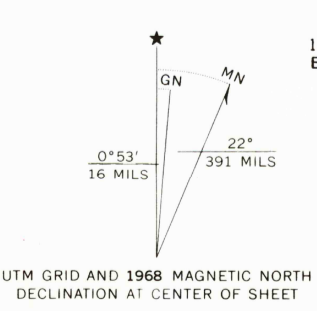
UNITED STATES
DEPARTMENT OF THE INTERIOR
GEOLOGICAL SURVEY

SNOQUALMIE QUADRANGLE
WASHINGTON—KING CO.
7.5 MINUTE SERIES (TOPOGRAPHIC)

1979 1:62,500
MOUNTAIN



Mapped, edited, and published by the Geological Survey
Control by USGS and USC&GS
Topography from aerial photographs by multiplex methods and by plane-table surveys 1953. Aerial photographs taken 1952
Polyconic projection. 1927 North American datum 10,000-foot grid based on Washington coordinate system, north zone 1000-meter Universal Transverse Mercator grid ticks, zone 10, shown in blue
To place on the predicted North American Datum 1983 move the projection lines 22 meters north and 92 meters east as shown by dashed corner ticks
Dashed land lines indicate approximate locations
Revisions shown in purple compiled from aerial photographs taken 1968. This information not field checked



FOR SALE BY U.S. GEOLOGICAL SURVEY, DENVER, COLORADO 80225, OR RESTON, VIRGINIA 22092
A FOLDER DESCRIBING TOPOGRAPHIC MAPS AND SYMBOLS IS AVAILABLE ON REQUEST

Map photoinspected 1973
No major culture or drainage changes observed

SNOQUALMIE, WASH.
47121-E7-TF-024
PHOTOINSPECTED 1973
1953
PHOTOREVISED 1968
DMA 1679 III SE—SERIES V891

USGS NMD HISTORICAL MAP
MAY 27 1966
REC'D FILE COPY