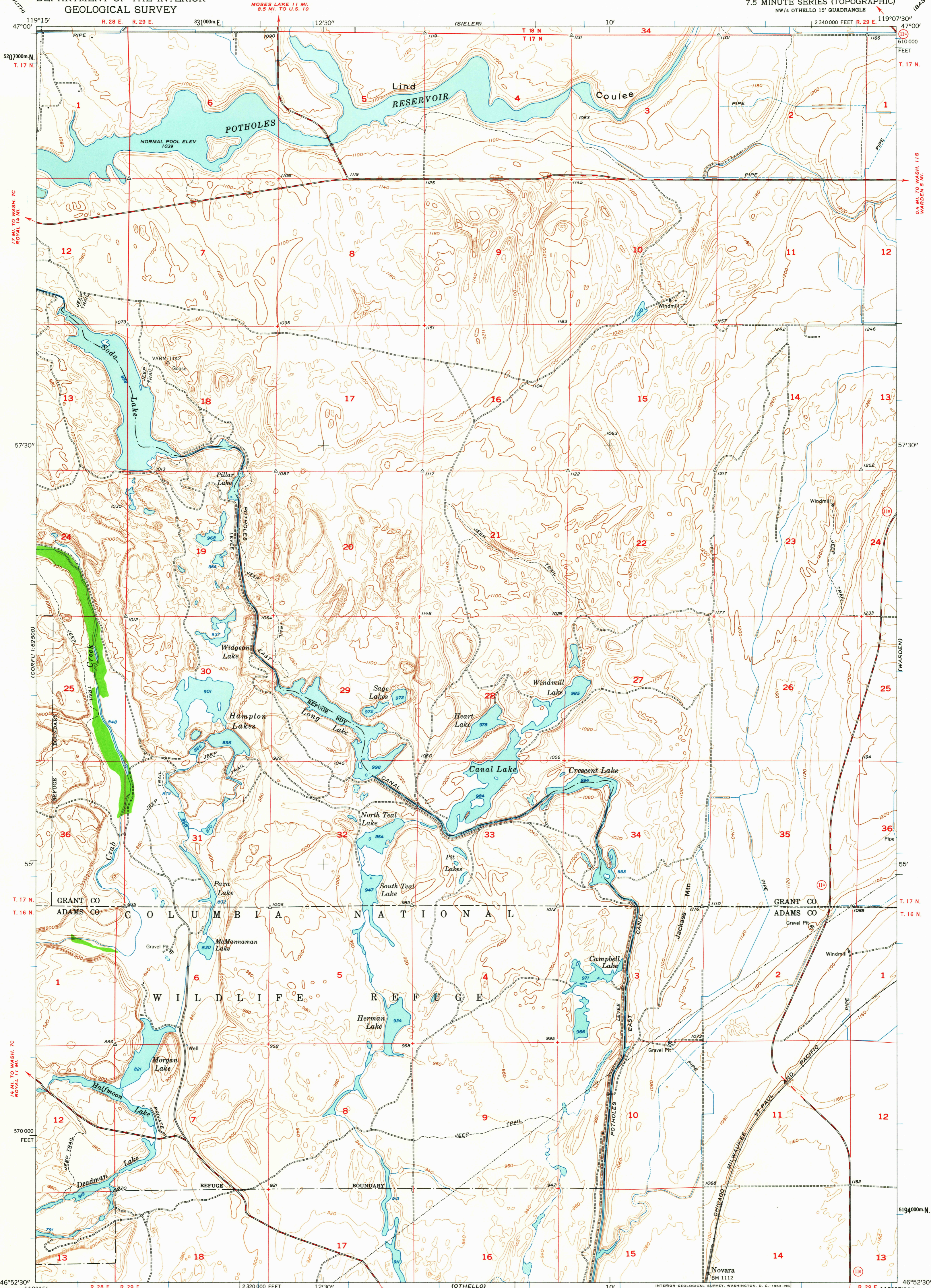


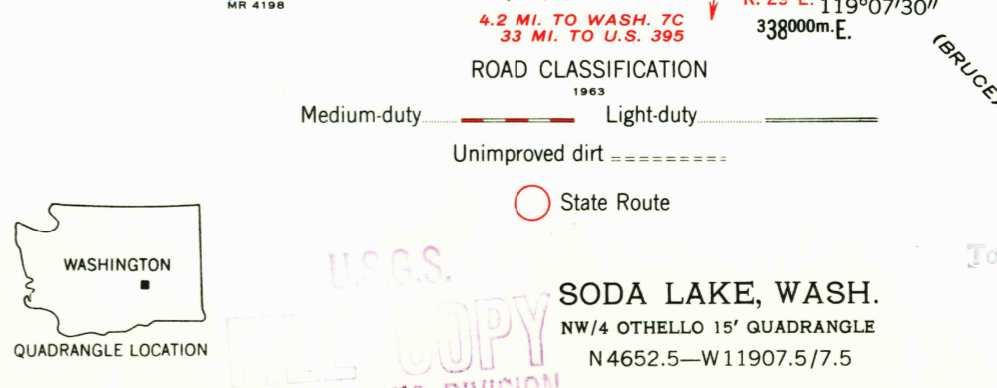
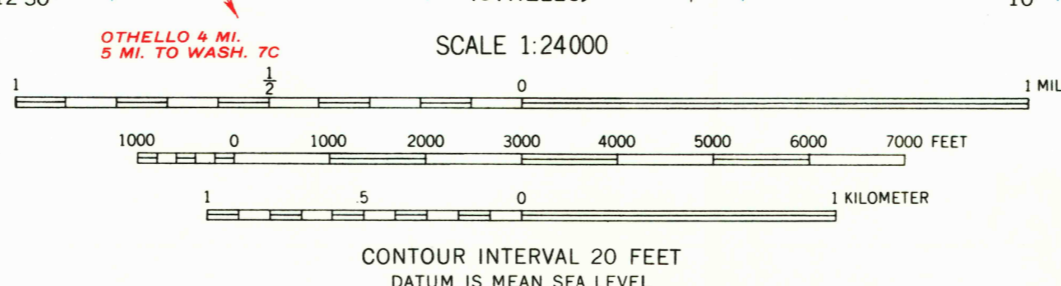
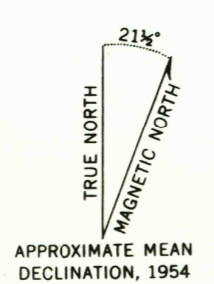
UNITED STATES  
DEPARTMENT OF THE INTERIOR  
GEOLOGICAL SURVEY

SODA LAKE QUADRANGLE  
WASHINGTON  
7.5 MINUTE SERIES (TOPOGRAPHIC)  
NW/4 OTHELLO 15' QUADRANGLE



Mapped, edited, and published by the Geological Survey

Control by USCGS and USBR  
Topography from plane-table surveys by USBR 1941-1942  
and by USGS from aerial photographs by multiplex methods  
Aerial photographs taken 1953. Field check 1954  
Polyconic projection. 1927 North American datum  
10,000-foot grid based on Washington coordinate system, south zone  
1000-meter Universal Transverse Mercator grid ticks,  
zone 11, shown in blue  
Elevations at section corners are for top of marker



THIS MAP COMPLIES WITH NATIONAL MAP ACCURACY STANDARDS  
FOR SALE BY U. S. GEOLOGICAL SURVEY, DENVER 25, COLORADO OR WASHINGTON 25, D. C.  
A FOLDER DESCRIBING TOPOGRAPHIC MAPS AND SYMBOLS IS AVAILABLE ON REQUEST

SODA LAKE, WASH.  
NW/4 OTHELLO 15' QUADRANGLE  
N 4652.5-W 11907.5/7.5

1954

USGS  
Topographic Division

APR 25 1953