

WESTERN
123°52'30"
46°45'

434000m E
R. 10 W. R. 9 W

5177000m N

T. 15 N.
T. 14 N.

42°30'

40'

T. 14 N.
T. 13 N.

490000 FEET

123°52'30"

1160000 FEET

50'

47°30"

1180000 FEET

123°45'

46°45'

530000 FEET

42°30'

40'

T. 14 N.
T. 13 N.

490000 FEET

123°52'30"

1160000 FEET

50'

47°30"

1180000 FEET

123°45'

46°45'

530000 FEET

42°30'

40'

T. 14 N.
T. 13 N.

490000 FEET

123°52'30"

1160000 FEET

50'

47°30"

1180000 FEET

123°45'

46°45'

530000 FEET

42°30'

40'

T. 14 N.
T. 13 N.

490000 FEET

123°52'30"

1160000 FEET

50'

47°30"

1180000 FEET

123°45'

46°45'

530000 FEET

42°30'

40'

T. 14 N.
T. 13 N.

490000 FEET

123°52'30"

1160000 FEET

50'

47°30"

1180000 FEET

123°45'

46°45'

530000 FEET

42°30'

40'

T. 14 N.
T. 13 N.

490000 FEET

123°52'30"

1160000 FEET

50'

47°30"

1180000 FEET

123°45'

46°45'

530000 FEET

42°30'

40'

T. 14 N.
T. 13 N.

490000 FEET

123°52'30"

1160000 FEET

50'

47°30"

1180000 FEET

123°45'

46°45'

530000 FEET

42°30'

40'

T. 14 N.
T. 13 N.

490000 FEET

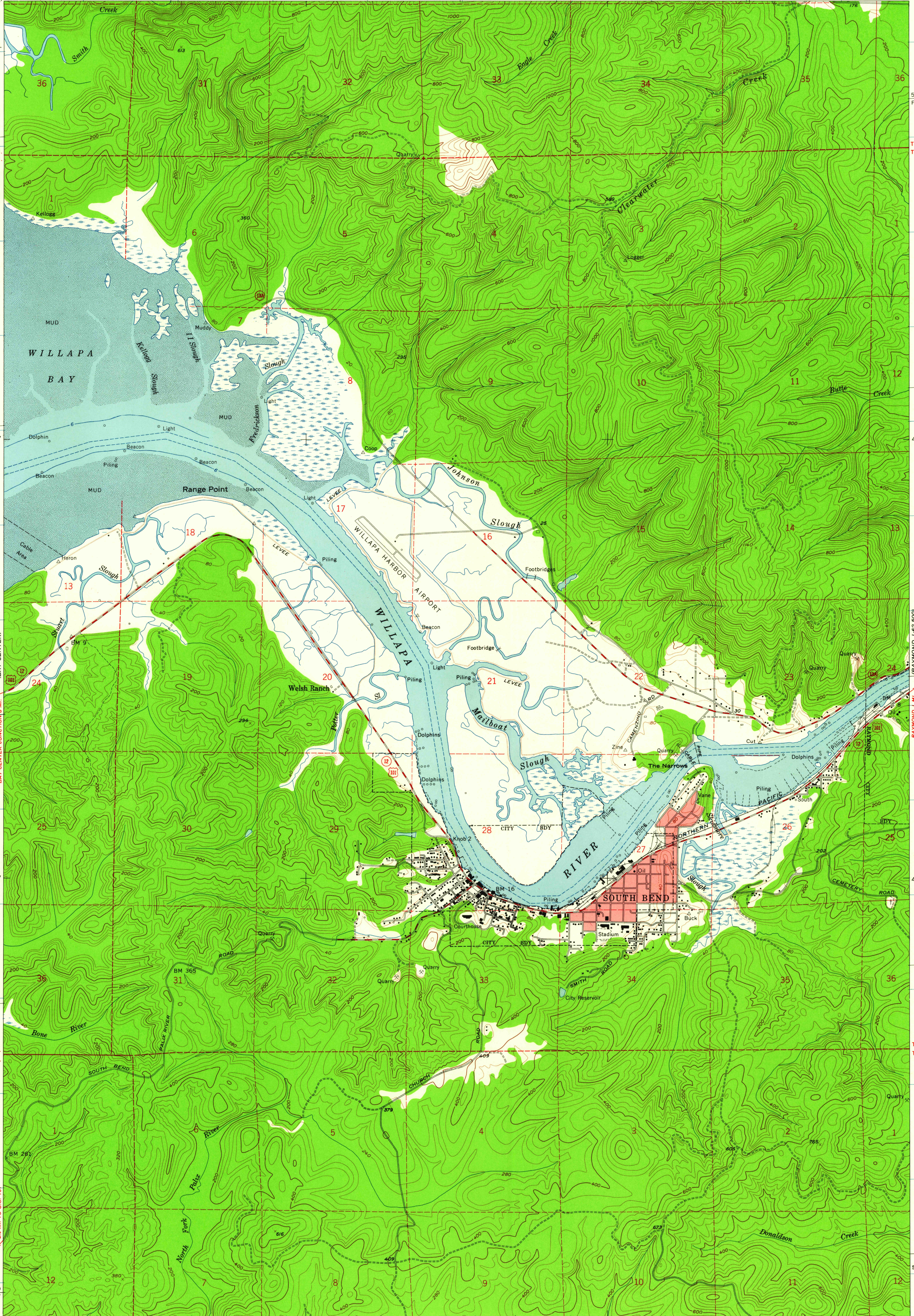
123°52'30"

1160000 FEET

50'

47°30"

1180000 FEET



Mapped by the U. S. Coast and Geodetic Survey
Edited and published by the Geological Survey

Control by USC&GS and USCE

Topography from aerial photographs by photogrammetric methods
Aerial photographs taken 1951. Field check 1957

Hydrography compiled from USC&GS chart 6185 (1957)

Polyconic projection. 1927 North American datum

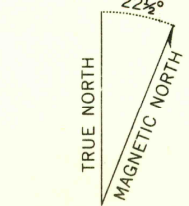
10,000-foot grid based on Washington coordinate system, south zone

1000-meter Universal Transverse Mercator grid ticks, zone 10, shown in blue

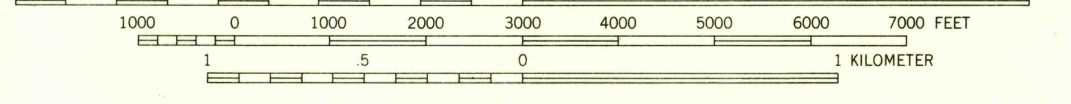
Dashed land lines indicate approximate locations

Red tint indicates area in which only landmark buildings are shown

Unchecked elevations are shown in brown



SCALE 1:24000

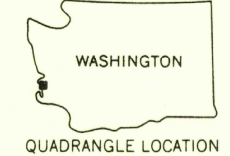


CONTOUR INTERVAL 40 FEET
DOTTED LINES REPRESENT 20-FOOT CONTOURS
DATUM IS MEAN SEA LEVEL

DEPTH CURVES IN FEET—DATUM IS MEAN LOWER LOW WATER

SHORELINE SHOWN REPRESENTS THE APPROXIMATE LINE OF MEAN HIGH WATER

THE MEAN RANGE OF TIDE IS APPROXIMATELY 8 FEET



ROAD CLASSIFICATION
Medium-duty — Light-duty
Unimproved dirt —
U. S. Route — State Route

SOUTH BEND, WASH.
NE/4 SOUTH BEND 15' QUADRANGLE
N4637.5—W12345/7.5

USCS
Historical File
Topographic Division

1957

FOR SALE BY U. S. GEOLOGICAL SURVEY, DENVER 25, COLORADO OR WASHINGTON 25, D. C.
A FOLDER DESCRIBING TOPOGRAPHIC MAPS AND SYMBOLS IS AVAILABLE ON REQUEST

U.S.G.S.
FILE COPY
TOPOGRAPHIC DIVISION

MAY -3 1960

2531