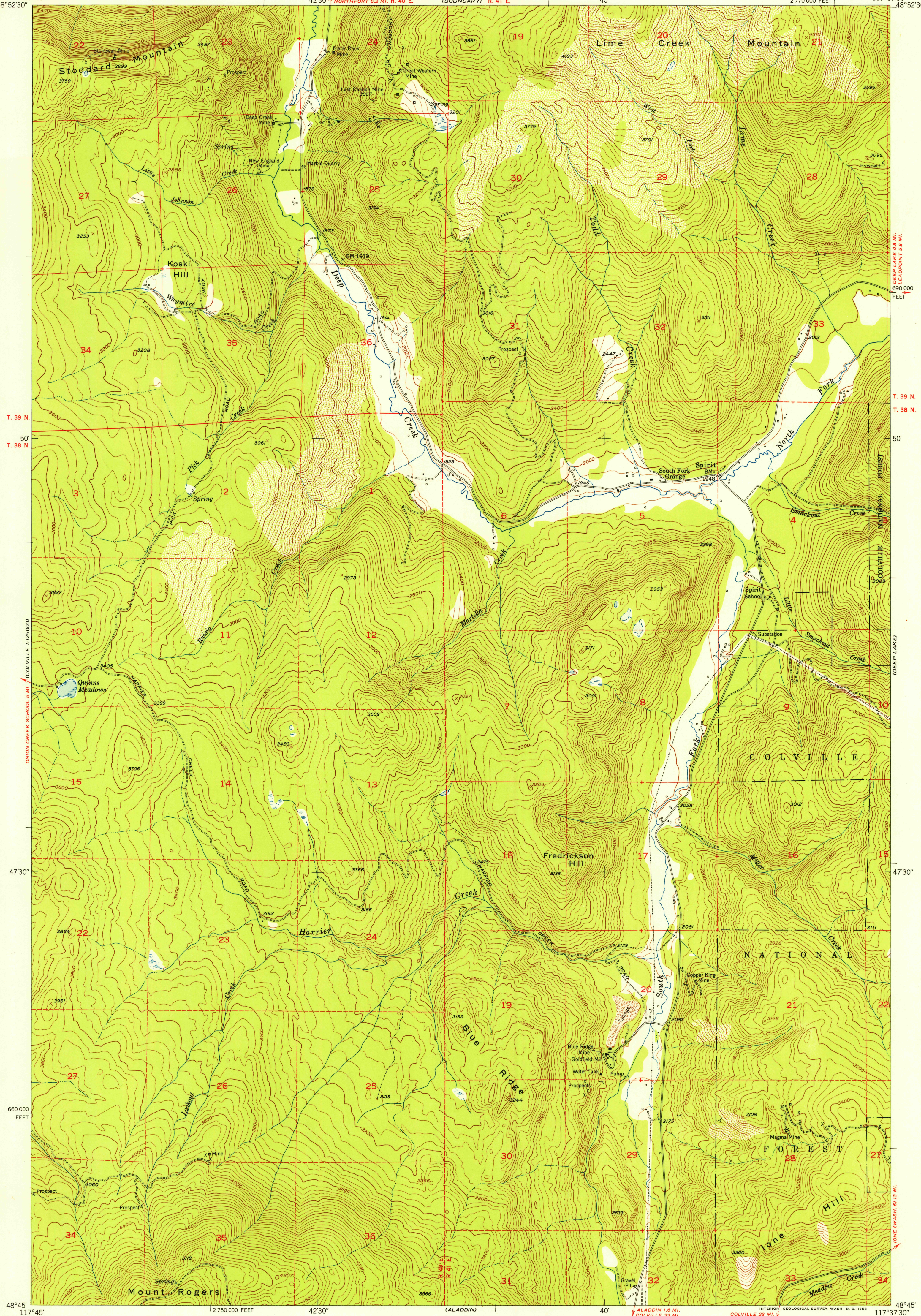
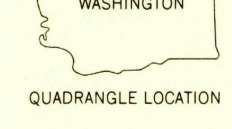
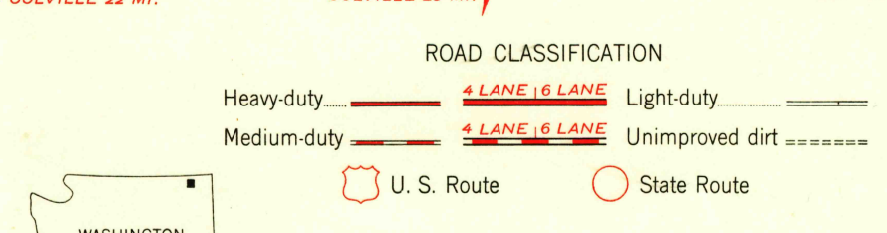
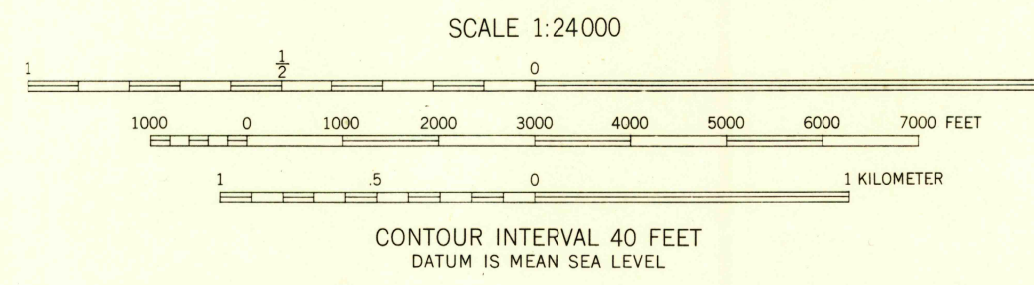


117°45' 48°52'30" 42°30' INTERNATIONAL BOUNDARY 14 MI. (BOUNDARY) R. 41 E. 40' 117°37'30" 48°52'30" 2 770 000 FEET

U.S.G.S.  
FILE COPY  
Inspection and Editing



Mapped, edited, and published by the Geological Survey  
Control by USGS and USC&GS  
Topography from aerial photographs by multiplex methods  
Aerial photographs taken 1943 and 1946. Field check 1952  
Polyconic projection. 1927 North American datum  
10,000-foot grid based on Washington coordinate system,  
north zone  
Dashed land lines indicate approximate locations  
Unchecked elevations are shown in brown



USGS  
Historical File  
Topographic Division  
SPIRIT, WASH.  
N4845-W11737.5/7.5  
1952

U.S.G.S.  
FILE COPY  
Inspection and Editing

JAN 5 1954  
2050