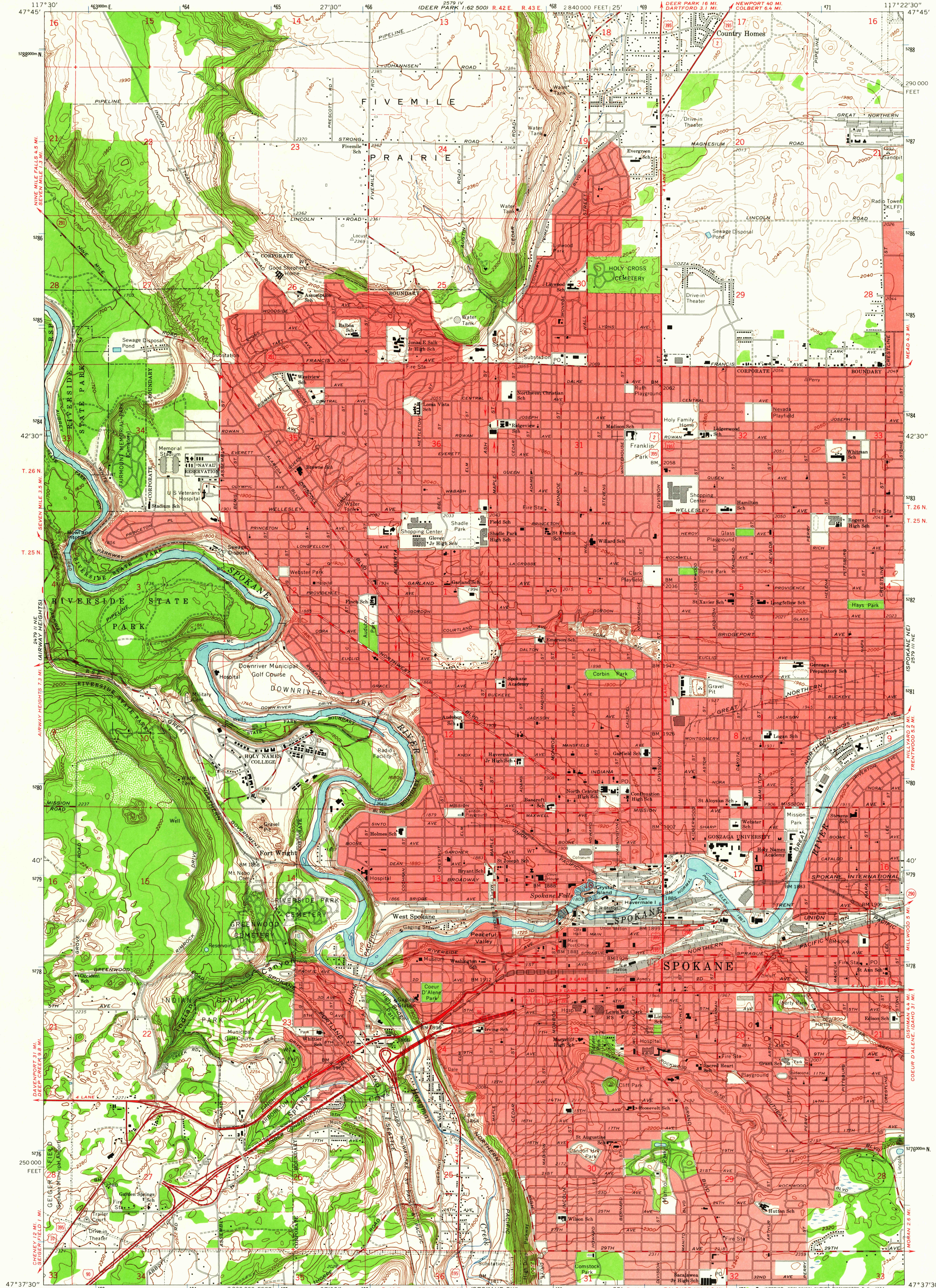


UNITED STATES
DEPARTMENT OF THE INTERIOR
GEOLOGICAL SURVEY

SPOKANE NW QUADRANGLE
WASHINGTON-SPOKANE CO.
7.5 MINUTE SERIES (TOPOGRAPHIC)
NW/4 SPOKANE 15' QUADRANGLE



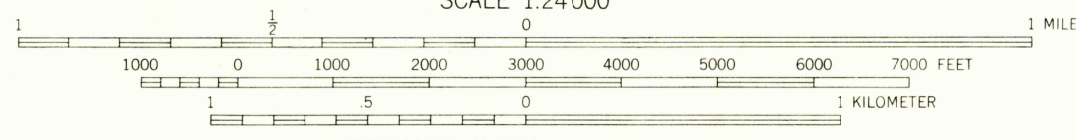
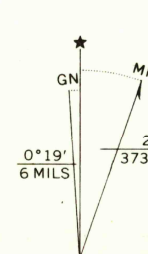
Maped, edited, and published by the Geological Survey
Control by USGS and USC&GS

Topography by photogrammetric methods from aerial photographs
taken 1946 and planimetric surveys 1950. Revised from aerial
photographs taken 1962. Field checked 1963

Polyconic projection. 1927 North American datum
10,000-foot grid based on Washington coordinate system,
north zone
1000-meter Universal Transverse Mercator grid ticks,
zone 11, shown in blue

Red tint indicates area in which only landmark buildings
are shown

Fine red dashed lines indicate selected fence lines



CONTOUR INTERVAL 20 FEET

DOTTED LINES REPRESENT 5 AND 10-FOOT CONTOURS

DATUM IS MEAN SEA LEVEL



ROAD CLASSIFICATION
Heavy-duty ——— Light-duty ———
Medium-duty ——— Unimproved dirt ———
Interstate Route ——— U.S. Route ——— State Route ———

SPOKANE NW, WASH.
NW/4 SPOKANE 15' QUADRANGLE
N4737.5—W11722.5/7.5

1963

AMS 2579 III NW—SERIES Y691

SEP 21 1964
U.S.G.S.
FILE COPY
TOPOGRAPHIC DIVISION