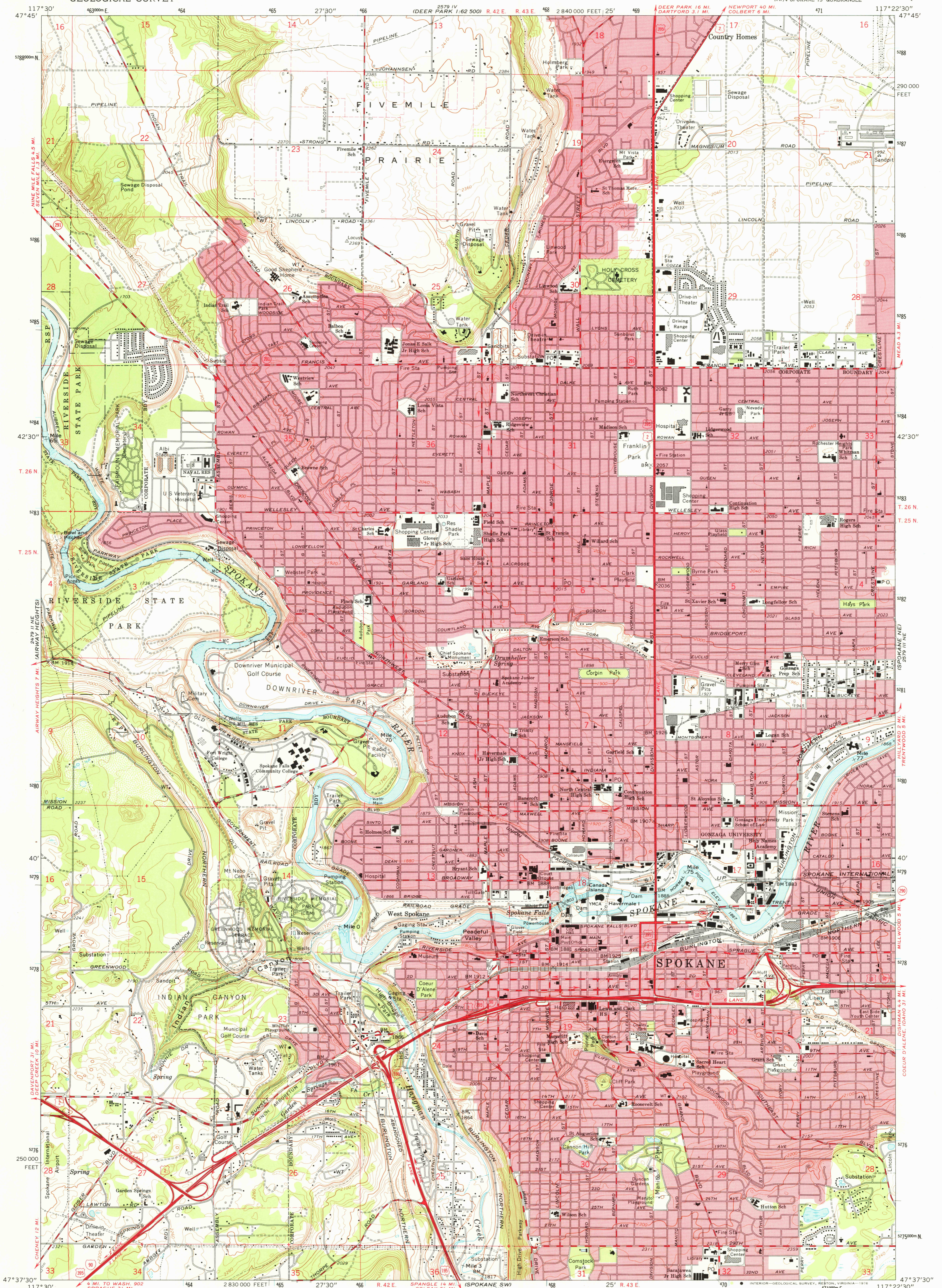


UNITED STATES  
DEPARTMENT OF THE INTERIOR  
GEOLOGICAL SURVEY

SPOKANE NW QUADRANGLE  
WASHINGTON-SPOKANE CO.  
7.5 MINUTE SERIES (TOPOGRAPHIC)

NW/4 SPOKANE 15' QUADRANGLE



Mapped, edited, and published by the Geological Survey

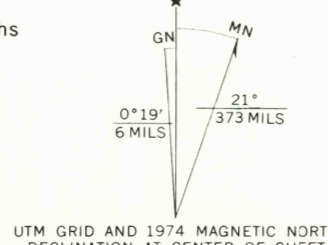
Control by USGS and NOS/NOAA

Topography by photogrammetric methods from aerial photographs taken 1946 and planetable surveys 1950. Revised from aerial photographs taken 1972. Field checked 1974

Projection and 10,000-foot grid ticks: Washington coordinate system, north zone (Lambert conformal conic) 1000-metre Universal Transverse Mercator grid ticks, zone 11, shown in blue. 1927 North American datum

Red tint indicates areas in which only landmark buildings are shown

Fine red dashed lines indicate selected fence lines



SCALE 1:24 000

CONTOUR INTERVAL 20 FEET  
DOTTED LINES REPRESENT 10-FOOT CONTOURS  
DOTTED LINES CROSSING RIVERS REPRESENT 5-FOOT CONTOURS  
NATIONAL GEODETIC VERTICAL DATUM OF 1929

THIS MAP COMPLIES WITH NATIONAL MAP ACCURACY STANDARDS  
FOR SALE BY U.S. GEOLOGICAL SURVEY, DENVER, COLORADO 80225, OR RESTON, VIRGINIA 22092  
A FOLDER DESCRIBING TOPOGRAPHIC MAPS AND SYMBOLS IS AVAILABLE ON REQUEST



ROAD CLASSIFICATION  
Primary highway, hard surface  
Secondary highway, hard surface  
Light-duty road, hard or improved surface  
Unimproved road  
Interstate Route  
U.S. Route  
State Route

SPOKANE NW, WASH.  
NW/4 SPOKANE 15' QUADRANGLE  
N4737.5-W11722.5/7.5

USGS  
Historical File  
Topographic Division  
MS 2579 III NW-SERIES V891

APR 09 1976