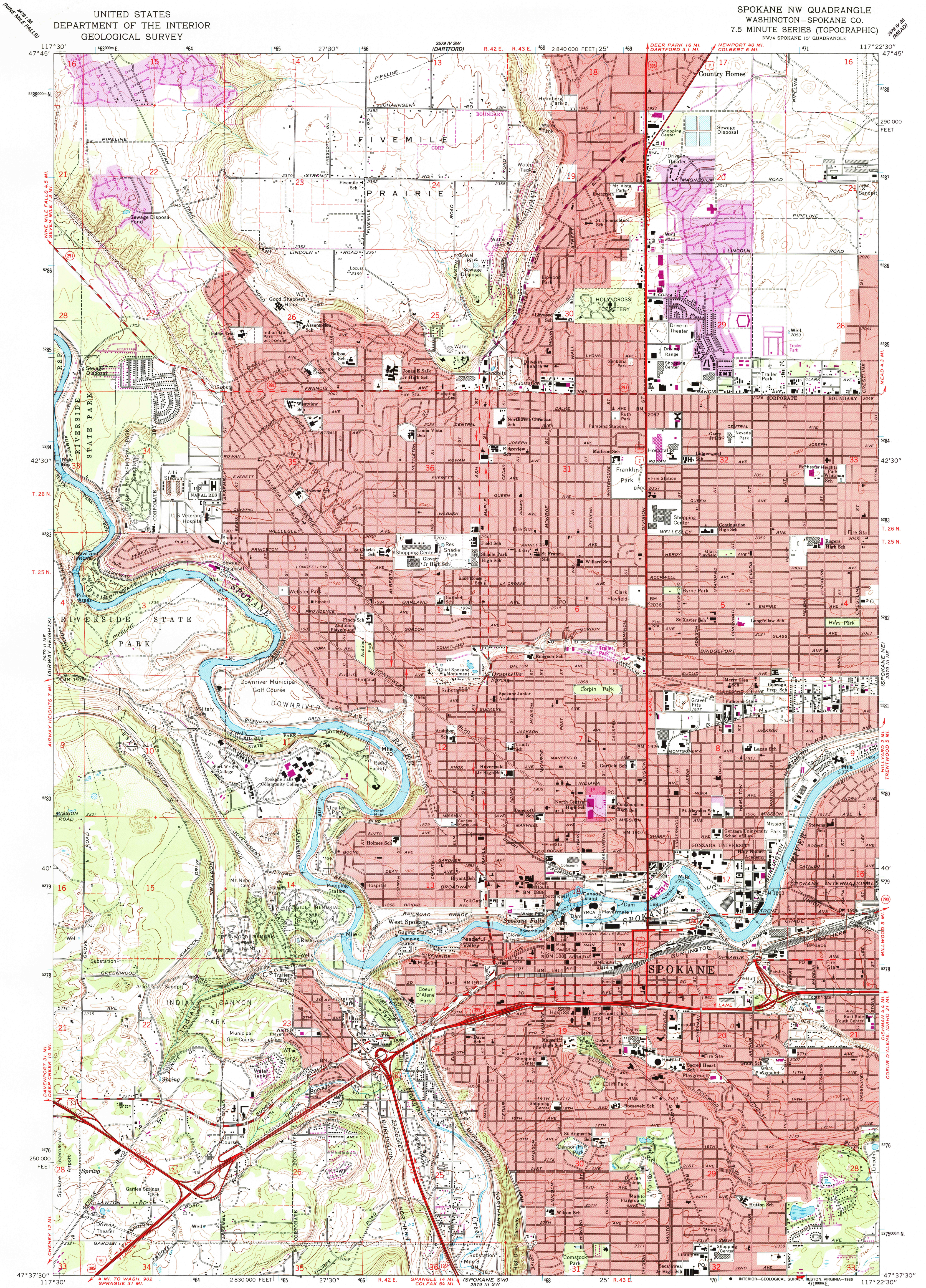


UNITED STATES  
DEPARTMENT OF THE INTERIOR  
GEOLOGICAL SURVEY

SPOKANE NW QUADRANGLE  
WASHINGTON—SPOKANE CO.  
7.5 MINUTE SERIES (TOPOGRAPHIC)  
NW/4 SPOKANE 15' QUADRANGLE



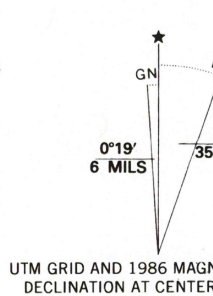
Mapped, edited, and published by the Geological Survey

Control by USGS and NOS/NOAA

Topography by photogrammetric methods from aerial photographs taken 1946 and planimetric surveys 1950. Revised from aerial photographs taken 1972. Field checked 1974

Projection and 10,000-foot grid ticks: Washington coordinate system, north zone (Lambert conformal conic)  
1000-meter Universal Transverse Mercator grid ticks, zone 11, shown in blue. 1927 North American datum  
Red tint indicates areas in which only landmark buildings are shown

To place on the predicted North American Datum 1983, move the projection lines 15 meters north and 79 meters east as shown by dashed corner ticks  
There may be private inholdings within the boundaries of the National or State reservations shown on this map



SCALE 1:24 000  
1000 0 1000 2000 3000 4000 5000 6000 7000 FEET  
1 0 1 KILOMETER  
CONTOUR INTERVAL 20 FEET  
DOTTED LINES REPRESENT 10-FOOT CONTOURS  
DOTTED LINES CROSSING RIVERS REPRESENT 5-FOOT CONTOURS  
NATIONAL GEODETIC VERTICAL DATUM OF 1929



ROAD CLASSIFICATION  
Primary highway, hard surface ——— Light-duty road, hard or improved surface  
Secondary highway, hard surface ——— Unimproved road  
Interstate Route ——— U.S. Route ——— State Route

SPOKANE NW, WASH.  
NW/4 SPOKANE 15' QUADRANGLE  
47117-F4-TF-024

1974  
PHOTOGRAPHED 1986  
DMA 2579 III NW-SERIES Y891

