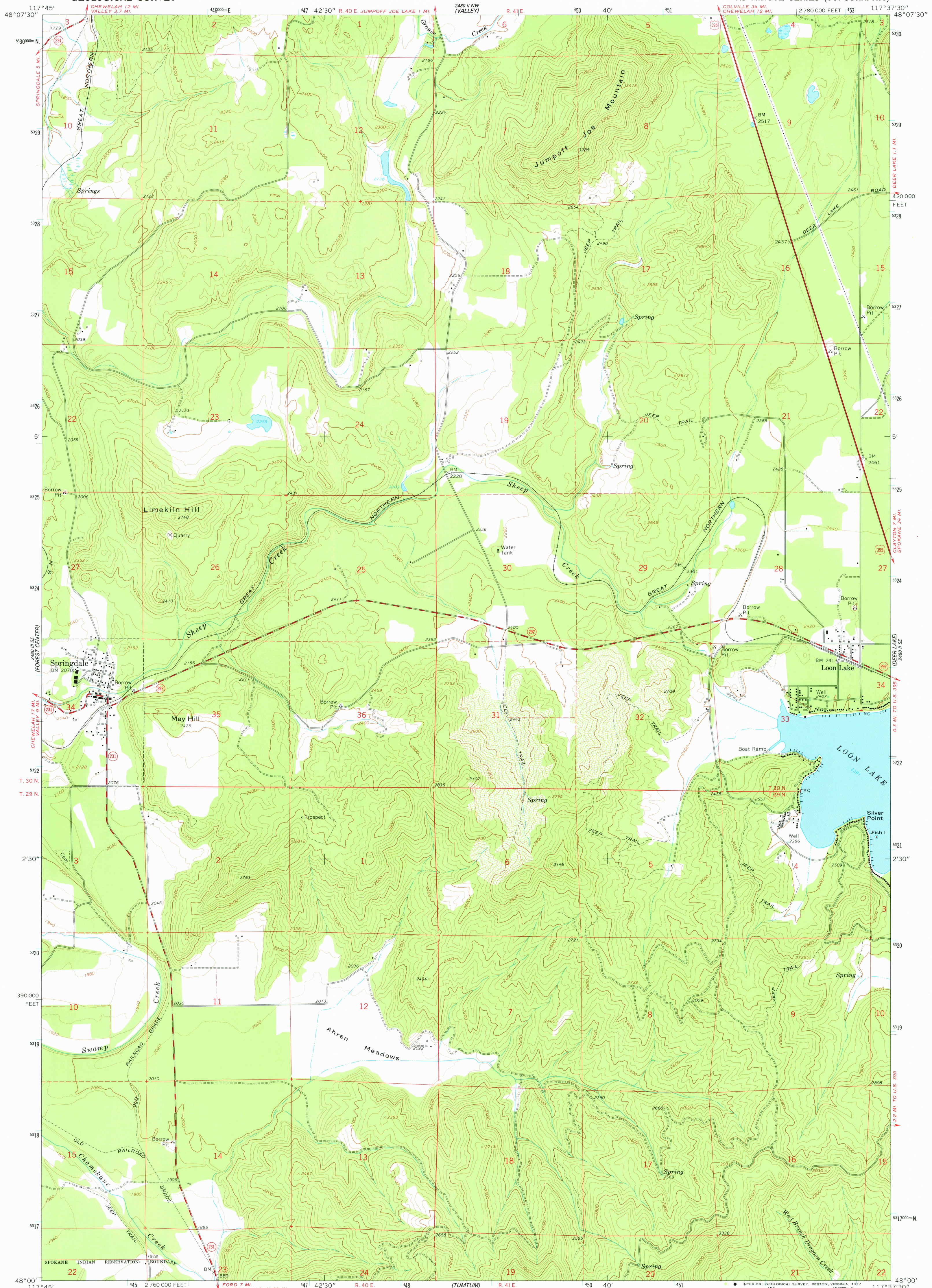


2480 N.E.
WATTS LAKE

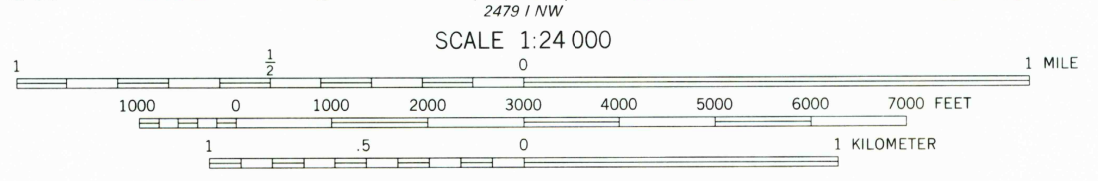
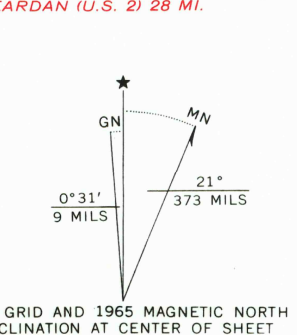
UNITED STATES
DEPARTMENT OF THE INTERIOR
GEOLOGICAL SURVEY

SPRINGDALE QUADRANGLE
WASHINGTON—STEVENS CO.
7.5 MINUTE SERIES (TOPOGRAPHIC)

2480 N.E.
(NE/SW BEAM)



Mapped, edited, and published by the Geological Survey
Control by USGS and USC&GS
Topography by photogrammetric methods from aerial
photographs taken 1962. Field checked 1965
Polyconic projection. 1927 North American datum
10,000-foot grid based on Washington coordinate system,
north zone
1000-meter Universal Transverse Mercator grid ticks,
zone 11, shown in blue
Fine red dashed lines indicate selected fence lines



ROAD CLASSIFICATION

Heavy-duty	Light-duty
Medium-duty	Unimproved dirt
U.S. Route	State Route



CONTOUR INTERVAL 40 FEET
DOTTED LINES REPRESENT 20-FOOT CONTOURS
NATIONAL GEODETIC VERTICAL DATUM OF 1929

THIS MAP COMPLIES WITH NATIONAL MAP ACCURACY STANDARDS
FOR SALE BY U. S. GEOLOGICAL SURVEY, DENVER, COLORADO 80225, OR RESTON, VIRGINIA 22092
A FOLDER DESCRIBING TOPOGRAPHIC MAPS AND SYMBOLS IS AVAILABLE ON REQUEST

SPRINGDALE, WASH.
N4800—W11737.5/7.5

1965
AMS 2480 II SW—SERIES V891

FEB 14 1978
2150

FORD
M97.5E

CLAYTON
2475.2E

USGS
Historical File
Topographic Division