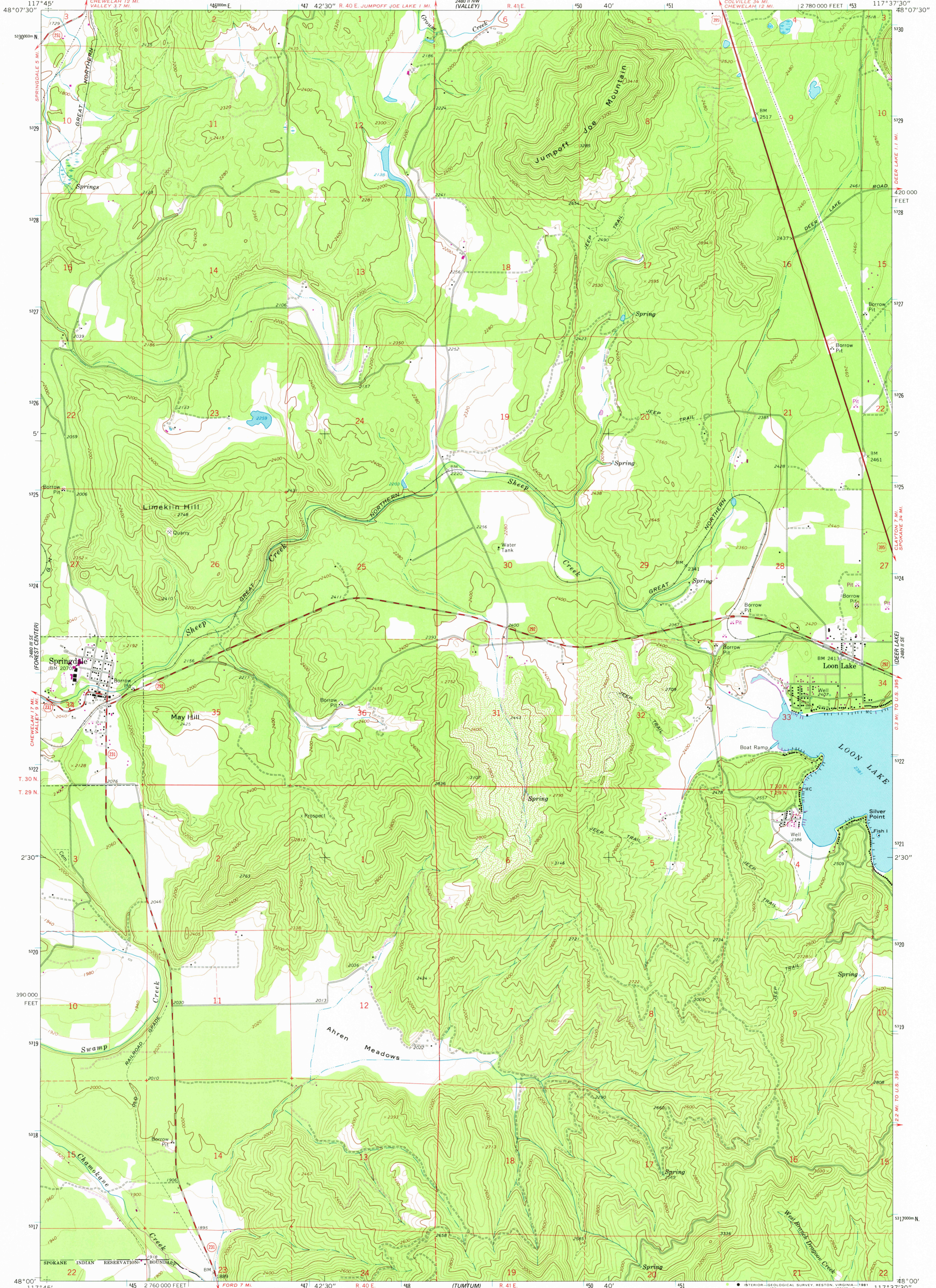


W 280° NE
WADSWORTH LAKE

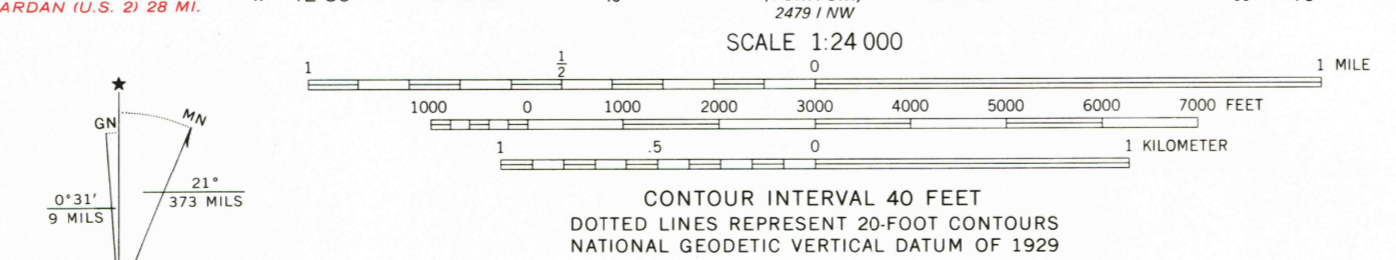
UNITED STATES
DEPARTMENT OF THE INTERIOR
GEOLOGICAL SURVEY

SPRINGDALE QUADRANGLE
WASHINGTON—STEVENS CO.
7.5 MINUTE SERIES (TOPOGRAPHIC)

W 280° NE
NELSON PEAK



Mapped, edited, and published by the Geological Survey
Control by USGS and NOS/NOAA
Topography by photogrammetric methods from aerial photographs taken 1962. Field checked 1965
Polyconic projection. 1927 North American datum 10,000-foot grid based on Washington coordinate system, north zone
1000-meter Universal Transverse Mercator grid ticks, zone 11, shown in blue
To place on the predicted North American Datum 1983 move the projection lines 15 meters north and 80 meters east as shown by dashed corner ticks
Fine red dashed lines indicate selected fence lines
There may be private inholdings within the boundaries of the National or State reservations shown on this map



CONTOUR INTERVAL 40 FEET
DOTTED LINES REPRESENT 20-FOOT CONTOURS
NATIONAL GEODETIC VERTICAL DATUM OF 1929
THIS MAP COMPLIES WITH NATIONAL MAP ACCURACY STANDARDS
FOR SALE BY U. S. GEOLOGICAL SURVEY, DENVER, COLORADO 80225 OR RESTON, VIRGINIA 22092
A FOLDER DESCRIBING TOPOGRAPHIC MAPS AND SYMBOLS IS AVAILABLE ON REQUEST

ROAD CLASSIFICATION
Heavy-duty ——— Light-duty ———
Medium-duty ——— Unimproved dirt ———
U. S. Route (red circle) State Route (black circle)

QUADRANGLE LOCATION
WASHINGTON

SPRINGDALE, WASH.
N 4800—W 11737.5/7.5

1965
PHOTOREVISED 1980
DMA 2480 II SW—SERIES V891

Revisions shown in purple compiled by the State of Washington from aerial photographs taken 1977 and other source data. This information not field checked 8-8-2004 1900

USGS
Historical File
National Mapping Div.

MAR 12 1981

2000