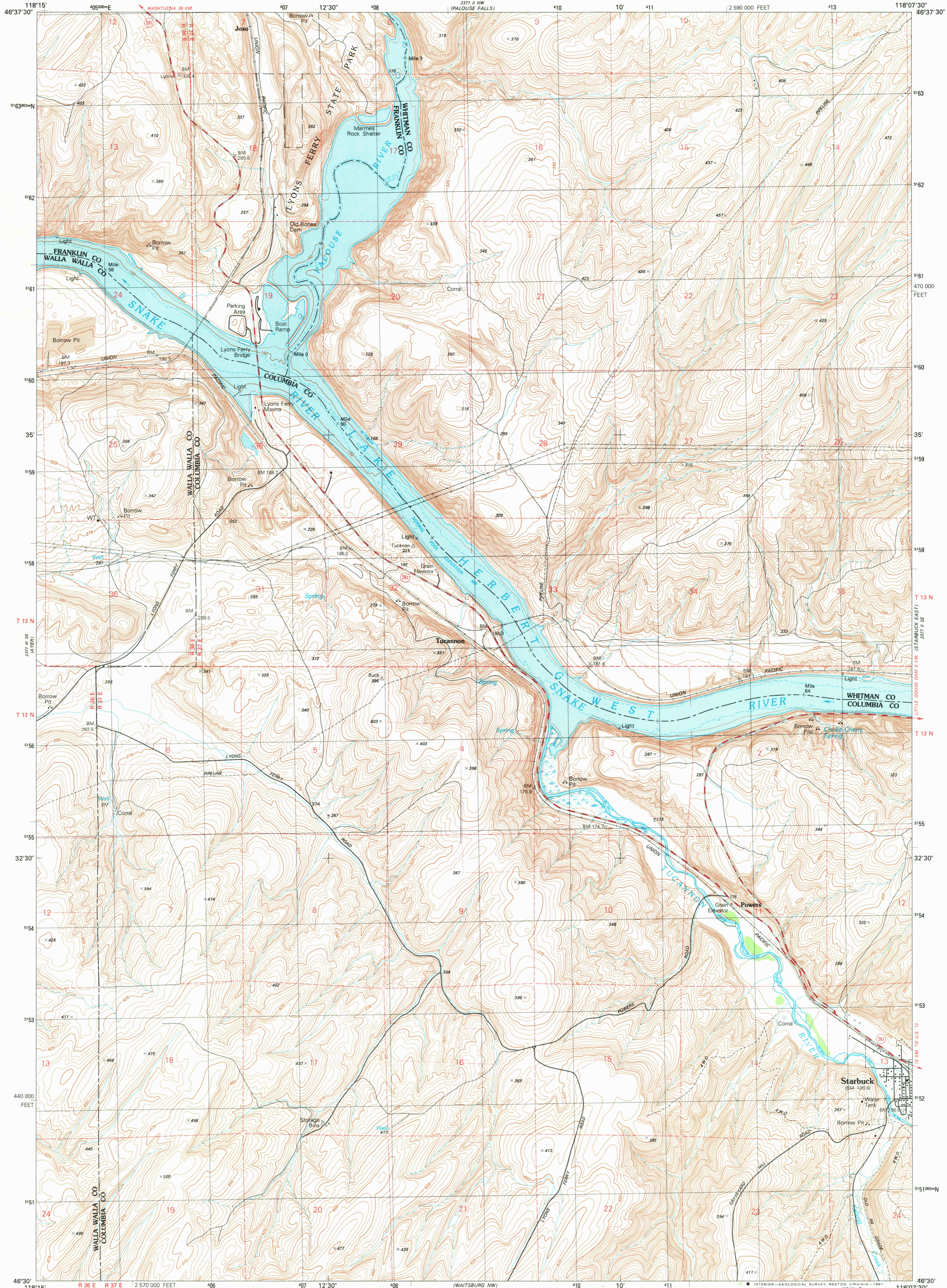


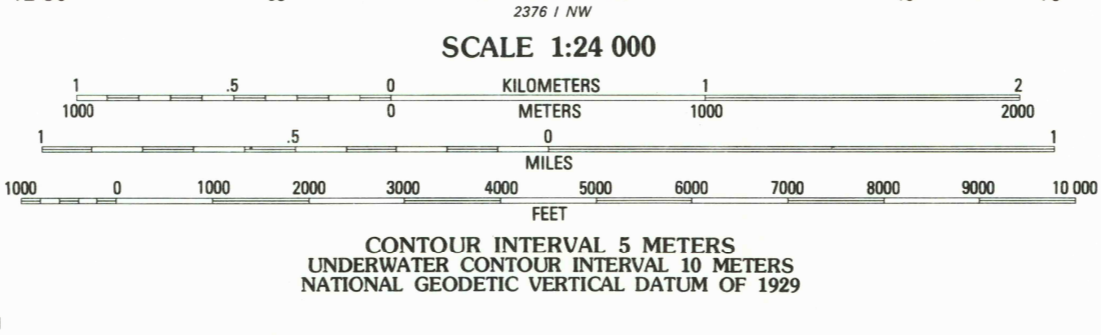
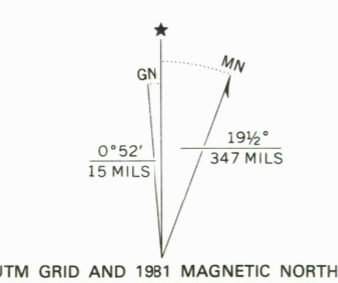
UNITED STATES
DEPARTMENT OF THE INTERIOR
GEOLOGICAL SURVEY

STARBUCK WEST QUADRANGLE
WASHINGTON
7.5 MINUTE SERIES (TOPOGRAPHIC)
SW/4 STARBUCK 15 QUADRANGLE



Produced by the United States Geological Survey

Control by USGS, NOS/NOAA, and USCE
Compiled by photogrammetric methods from aerial photographs taken 1975. Field checked 1976
Map edited 1981
Projection and 1000-meter grid, zone 11, Universal Transverse Mercator
10,000-foot grid ticks based on Washington coordinate system, south zone. 1927 North American Datum
To place on the predicted North American Datum 1983 move the projection lines 17 meters north and 82 meters east as shown by dashed corner ticks
There may be private inholdings within the boundaries of the National or State reservations shown on this map



ROAD CLASSIFICATION

Primary highway, hard surface	Light-duty road, hard or improved surface
Secondary highway, hard surface	Unimproved road
○ Interstate Route	○ U. S. Route
	○ State Route

WASHINGTON
QUADRANGLE LOCATION

STARBUCK WEST, WASH.
SW/4 STARBUCK 15 QUADRANGLE
N4630-W11807.5/7.5
1981
DMA 2377 II SW—SERIES V891

NOV 25 1981

Handwritten signature