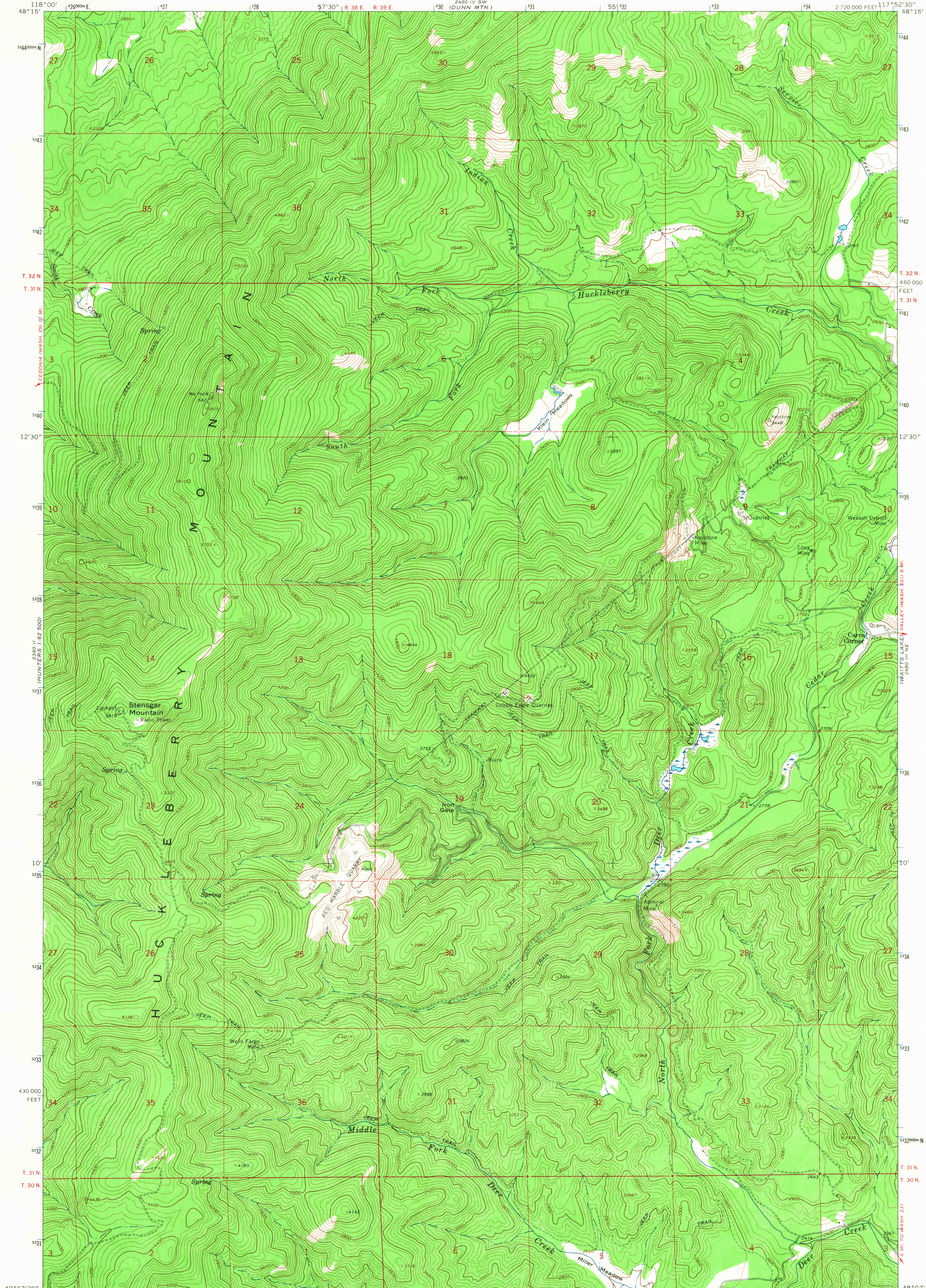


UNITED STATES  
DEPARTMENT OF THE INTERIOR  
GEOLOGICAL SURVEY

STENSGAR MTN. QUADRANGLE  
WASHINGTON—STEVENS CO.  
7.5 MINUTE SERIES (TOPOGRAPHIC)

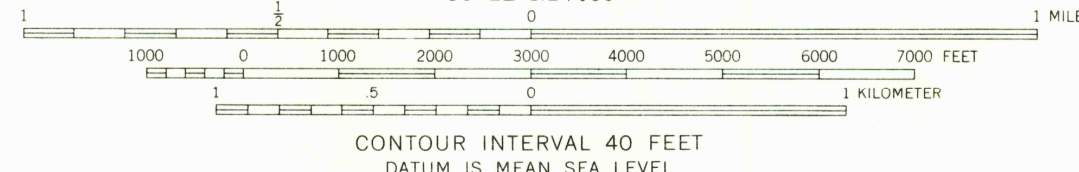
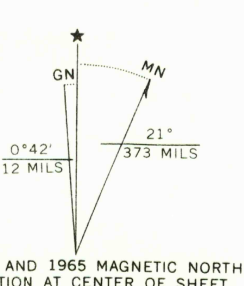


Mapped, edited, and published by the Geological Survey

Control by USGS and USC&GS

Topography by photogrammetric methods from aerial  
photographs taken 1962. Field checked 1965

Polyconic projection. 1927 North American datum  
10,000-foot grid based on Washington coordinate system,  
north zone  
1000-meter Universal Transverse Mercator grid ticks,  
zone 11, shown in blue



ROAD CLASSIFICATION  
Light-duty ————— Unimproved dirt =====

USGS  
Historical File  
Topographic Division

STENSGAR MTN., WASH.  
N4807.5—W11752.5/7.5

1965

AMS 2480 III NW—SERIES V891

U.S.G.S.  
FILE COPY  
TOPOGRAPHIC DIVISION

2730

1965