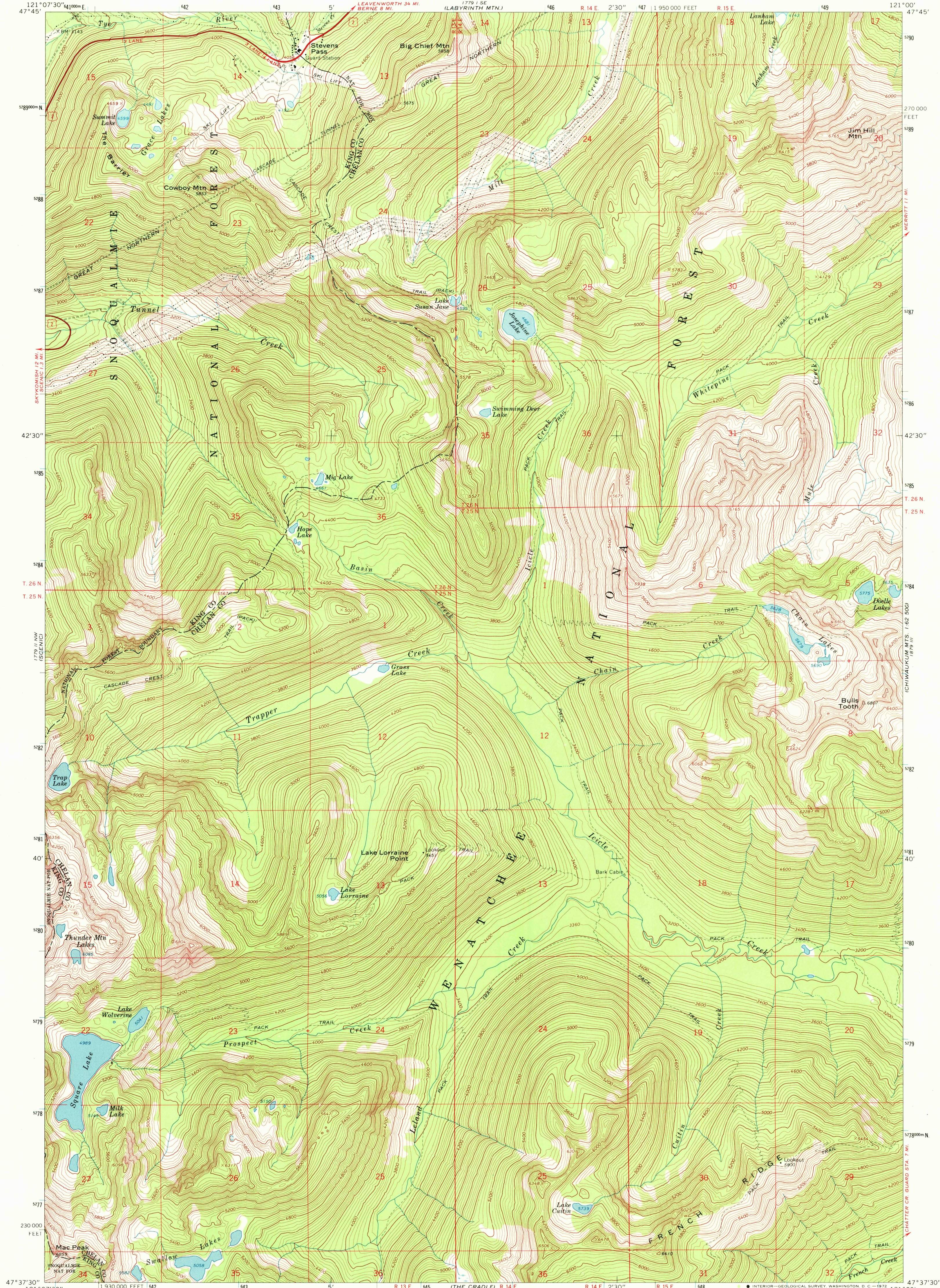


UNITED STATES
DEPARTMENT OF THE INTERIOR
GEOLOGICAL SURVEY

STEVENS PASS QUADRANGLE
WASHINGTON
7.5 MINUTE SERIES (TOPOGRAPHIC)



Mapped, edited, and published by the Geological Survey

Control by USGS and USC&GS

Topography by photogrammetric methods from aerial photographs taken 1958. Field checked 1965

Polyconic projection. 1927 North American datum

10,000-foot grid based on Washington coordinate system, north zone

1000-meter Universal Transverse Mercator grid ticks, zone 10, shown in blue

SCALE 1:24,000

1 1000 2000 3000 4000 5000 6000 7000 FEET

1 1000 2000 3000 4000 5000 6000 7000 METERS

CONTOUR INTERVAL 40 FEET
DATUM IS MEAN SEA LEVEL

ROAD CLASSIFICATION

Heavy-duty ————— Unimproved dirt —————

U.S. Route



STEVENS PASS, WASH.
N4737 5-W12100/7.5

1965

AMS 1779 II NE-SERIES V891

JUN 9 1972

USGS
HISTORICAL FILE
TOPOGRAPHIC DIVISION

6755